

SURVEYOR

HOODSIF

Indiana Society of Professional Land Surveyors, Inc.

Affiliated with the American Congress on Surveying and Mapping

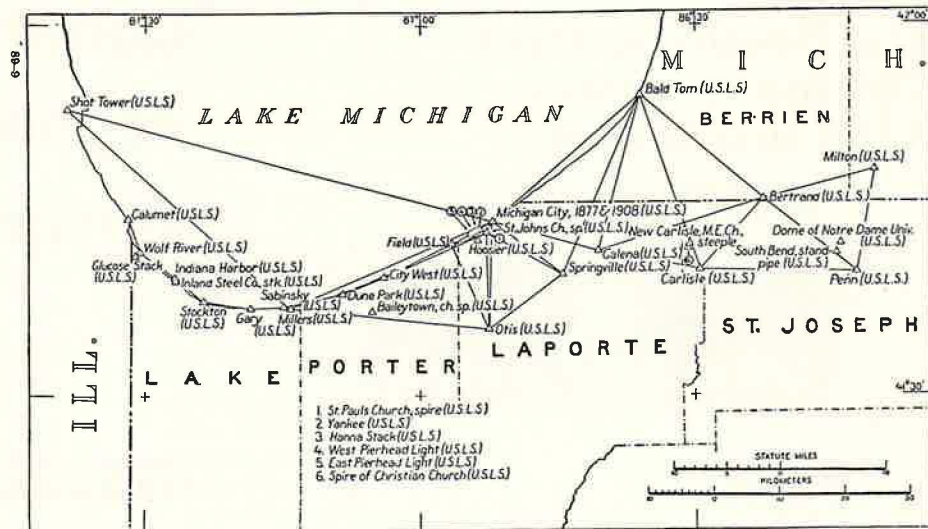


Fig. 23.—U. S. LAKE SURVEY TRIANGULATION, CHICAGO TO SOUTH BEND.

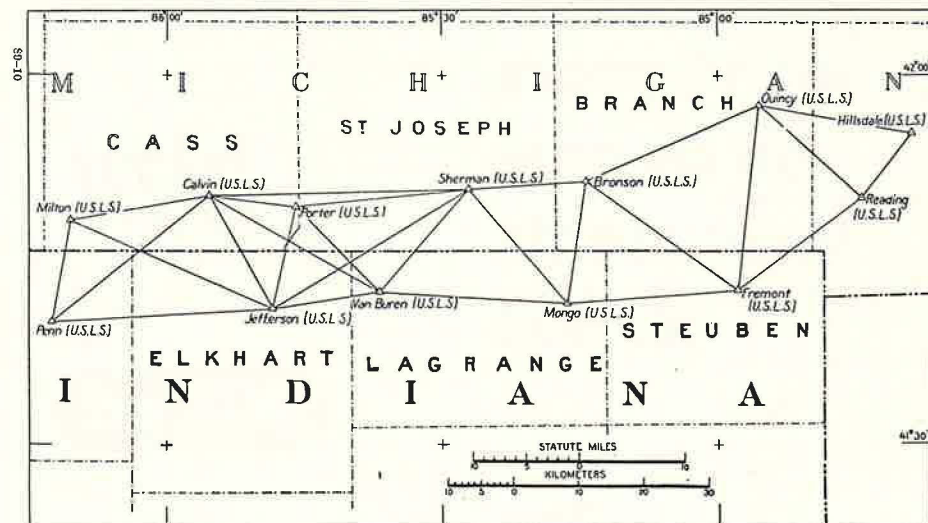


Fig. 24.—U. S. LAKE SURVEY TRIANGULATION SOUTH BEND TO THE EASTERN BOUNDARY OF INDIANA.



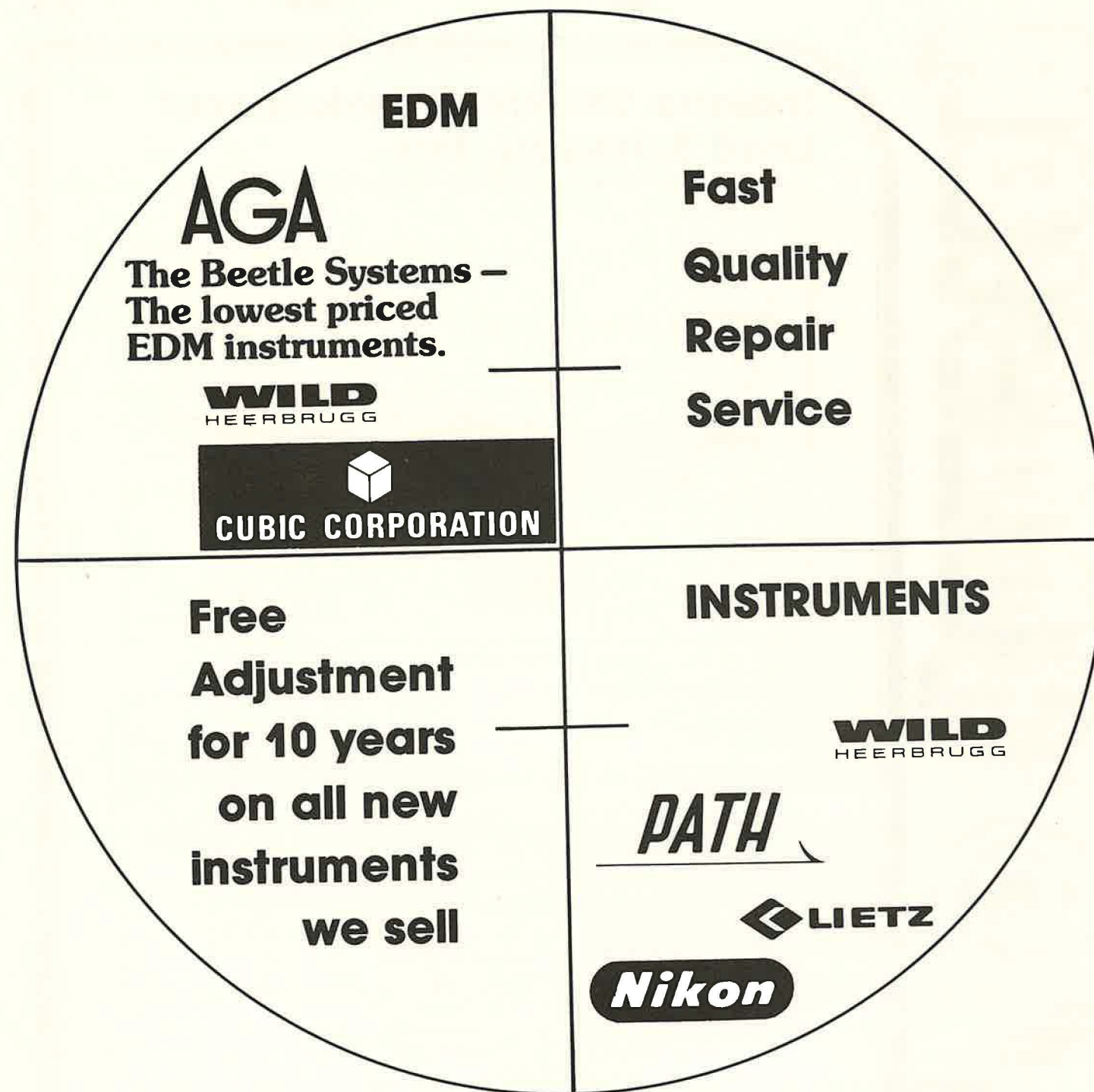
VOLUME 5
NUMBER 3
SUMMER 1978



• STATE REGISTRATION BOARD ACTIVITIES • NEW LAND INFORMATION INSTITUTE • MAGNETIC PUBLICATIONS • INITIAL POINT • CONVENTION ACTIVITIES • WATTLES WORKSHOP

HICKERSON INSTRUMENT CO., INC.

SURVEYING INSTRUMENTS - SALES AND SERVICE



6009-11 E. 34TH STREET, INDIANAPOLIS, IND. 46226, PHONE (317) 547-7667

INSTRUMENTS • DRAFTING ROOM FURNITURE • BLUE LINE MACHINES & PAPER •
E.D.M. EQUIPMENT • OFFICE FURNITURE • FIELD SUPPLIES

HOOSIER SURVEYOR

VOLUME 5, NO. 3, SUMMER 1978

Committee Assignments (1978)

OFFICERS AND DIRECTORS FOR THE YEAR 1978

President

Roger Woodfill
R. R. 1, Box 20, Pribble Rd.
Lawrenceburg, Ind. 47025

President-Elect

Orwic Johnson
P. O. Box 1171
Columbus, Ind. 47201

Vice-President

Charles A. Budnick
2512 Cicero Road
Noblesville, Ind. 46060

Secretary-Treasurer

David K. Wolf
R. R. 1, Box 45
Garrett, Ind. 46738

State Office ISPLS

3919 Meadows Dr., Suite 103
Indianapolis, Ind. 46205
Phone: 317/545-8907
Secretary: Peggy Archer

Directors

Byron M. Brady
1607 E. Lake Dr., West
Elkhart, Ind. 46514

Kenneth S. Curtis
2204 Happy Hollow Road
West Lafayette, Ind. 47906

Brad R. DeReamer
601 Chestnut Lane
Greenfield, Ind. 46140

Ordell L. Gertsmeier
158 Napoleon St.
Valparaiso, Ind. 46383

Gene L. O'Brien
448 Meadow Lane
Madison, Ind. 47250

John V. Schneider
65 Bay Shore Court
Carmel, Ind. 46032

Ray T. Tappan
700 N. Main St.
Crown Point, Ind. 46307

Scholarship

John Fisher (chairman)
Brad De Reamer (reporter)
Phil Burress
Lloyd Kemmer

Committee to Study Engineer-Surveyor Position

James Morley (chairman)
Ordell Gertsmeier (reporter)
Gene Darnell
Wyatt Johnson

Ethics & Business Practices

John Schneider (chairman)
Brian Dickerson (reporter)
Bill Tanke
John McEntyre
Wes Day

Corner Perpetuation

John McNamara (chairman)
Bryon Brady (reporter)
William Land

Continuing Education Programs

John Beals (chairman)
Roger Woodfill (reporter)
Rollyn Blankenbeker
Dennis Grumpp

Continuing Education Records

Jerry Martin
Gene O'Brien (reporter)
Richard Beck
Roger Fine

Economics Committee

Brian Dickerson (chairman)
David Wolf (reporter)
James Vinton
Larry VanOsdol

Editor's Note: The tardiness of this Summer issue is the fault of the editor and not the printer!

COVER: The first triangulation in Indiana was made in 1874-78 by the U.S. Lake Survey (U.S.L.S.), a part of the Corps of Engineers, U.S. Army. The arc of precise triangulation runs along the northern boundary of the State. The arc in southern Indiana along the 39th parallel was not run until 1885-90. (From U.S.C. & G.S. Spec. Publ. 79)

EDITOR'S NOTE:
Deadlines for copy for various planned issues of the HOOSIER SURVEYOR are as follows:
Winter issue - January 31
Spring issue - April 30
Summer issue - July 31
Fall issue - October 31
The HOOSIER SURVEYOR is reproduced by the Printing Department of Marbaugh Engineering Supply Co., Inc., Indianapolis, Indiana.

Publications

Rex Bowman (chairman)
Kenneth Curtis (reporter)
Don Gwinnup
Gary Kent

Workshops

Al McConahay (chairman)
Charles Budnick (reporter)
Dallas Montgomery
Julian "Jud" Rouch
I.S.P.L.S. - County Surveyor's Association
Bill Tanke (chairman)
Ray Tappan (reporter)
Wes Day

Legislative

Luther Condre (chairman)
Orwic Johnson (reporter)
Nelson Prall
David South
Gordon Curtis

Commercial Supporters

John Schneider (chairman)
Emil Beeg (reporter)
Charles Campbell
Tim Warner

Standards

Arville Brown (chairman)
David Wolf (reporter)
Lee Miller
Donald Shapiro

Headquarters

Charles Budnick (chairman)
John Schneider (reporter)
Orwic Johnson

Plane Coordinates and the 1983 NAD

Jose LaFrossia (chairman)
Ray Tappan (reporter)
Ken Curtis
Gary Smith

The Hoosier Surveyor is published quarterly by the Indiana Society of Professional Land Surveyors, to inform land surveyors and related professions, government officials, educational institution, libraries, contractors, suppliers, and associated businesses and industries about land surveying affairs.

Editorial/Advertising offices: 3919 Meadows Drive, Suite 103, Indianapolis, IN 46205 (Telephone: 317/545-8907). Advertising rates, closing dates, circulation data on request. Contributed articles, photographs subject to space limitations.

Kenneth S. Curtis
Editor

THE PRESIDENT'S PAGE

PRESIDENT'S MESSAGE

By Roger Woodfill

TOPIC: THE BOARD OF REGISTRATION FOR PROFESSIONAL ENGINEERS AND LAND SURVEYORS

On July 21 of this year the Board of Directors of the Indiana Society of Professional Land Surveyors, Inc. met with the Indiana Board of Registration for Professional Engineers and Land Surveyors. I.S.P.L.S. has for several years helped the registration board with ethical and business practice complaints, but never before had a joint meeting between the two boards been conducted. I was reminded of (or learned) many things. Some of them are listed below with my comments:

1. The registration board is looking for an Administrative Secretary to replace the retiring Bernie Loeffler. They are also in need of an investigator. Salaries for these positions range \$26,000 to \$20,000 and \$20,00 to \$16,000 respectively. An applicant should be licensed as an engineer to be seriously considered for the secretary's position.
2. The two most common complaints to the registration board against land surveyors are about the fees they charge and that the surveyor's are "taking the peoples land away from them". Both of these types of complaints are not really pertinent to the state board's function. If the complainants are insistent, they are referred to the I.S.P.L.S. ethic committee. (Incidentally John Schneider chairs our ethics committee this year. He with the other four immediate past presidents are doing exceptional committee work this year).
3. Most of the license testing is done using the standard national exam, and there is an urgent need for questions and answers to be submitted by you, the practicing land surveyor. See other sections of this "Hoosier Surveyor" for details and the results of recent exams. The registration board readily agreed to publish a brief newsletter of their actions and also to send I.S.P.L.S. agenda of their regular meetings.
4. Robert J. Richardson, a member of I.S.P.L.S., a surveyor, and a member of the registration board does carefully screen applicants who want to sit for the exam. He asked that we be honest and accurate when reporting an employees work experience or making character analysis. The reference forms presently in use, although not perfect, were partially designed by Neil Franklin, when he was I.S.P.L.S. liaison to the registration board. We owe Neil a "Thank You" for that work.
5. The registration board receives more complaints about land surveyors than they receive about engineers although there are many more engineers. The state board volunteered, however that the reason was because of the only "recent" recognition of surveying as a true profession and the board commended land surveyors and I.S.P.L.S. for their great strides toward professionalism made during those "recent" years.
6. If you have legitimate complaint against a registrant, the registration board will act. However, you must be willing to put the complaint in writing and act as the prosecutor. The state board pictures themselves as the judge and jury--not the prosecutor, but the secretary and investigator will help you prepare your argument. The board has very little control over the non-registrant.

In closing I would like to challenge you to consider a current political movement--the sunset laws. We probably all agree that there is too much bureaucratic meddling and waste in our daily lives. Therefore, we are probably all in favor of eliminating those



Roger Woodfill
President

government agencies that are not necessary to the public welfare or safety. Recently, I received notice that in May of this year, the Sunset Commission in the State of Texas voted to make no recommendation for continuation of that state's Board of Registration for Public Surveyors or for that state's Board of Examiners for Licensed State Land Surveyors. Therefore, the sun will be allowed to set on these two agencies and the laws regulating surveying in Texas will draw to an end September 1, 1979.

I can think of no greater threats to the profession of Land Surveying than the lack of recognition that land surveyors have special talents, and that the state must test for the existence of these minimum requirements. The Indiana Sunset Commission reviews our board of registration in 1980. Are you prepared to explain why licensing is necessary to become a land surveyor? We must work closely with the Indiana State Board of Registration for Professional Engineers and Land Surveyors to see that our profession is not eliminated in Indiana.



- | | |
|----------------------|--|
| October 5-7, 1978 | Meeting on Modernization of Land Data Systems, Washington, D.C. |
| October 16-20, 1978 | Fall Convention of American Congress on Surveying and Mapping, Albuquerque, New Mexico |
| February 15-17, 1979 | Annual Convention of Indiana Society of Professional Land Surveyors, Airport Hilton, Indianapolis. |
| March 18-23, 1979 | Annual Convention of American Congress on Surveying and Mapping, Washington, D.C. |

CREDITORS HELP THEMSELVES WITH FREE SKIP TRACING SERVICE

Have you priced out a skip tracing service lately? It can be an expensive proposition to find people for whom you have no current address. Maybe it's a customer who hasn't paid his bill. Maybe it's just an old schoolmate and you're in charge of mailing invitations to a class reunion.

If it's money you're after, and the amount is large enough, you can get a collection agency to do it for you. They will also want to handle collection, however, and charge you around 50% for the total service. If you go the private investigator route you will find his charges ranging either way from \$30 per hour depending on your location. There is an inexpensive third alternative available to those who have availed themselves of the accounts receivable control and collection system which is offered by I. C. System, Inc., and is approved by the Indiana Society of Professional Land Surveyors.

I. C. System, Inc., provides a number of free fringe benefits to all who enroll in their program. One of these is a brochure that takes you step by step through the skip tracing process used by the professionals. Anyone in your office can handle your skip tracing for you. And, if it's money you're after, you get a shot at collecting it yourself first using yet another free pre-collection tool provided courtesy of I.C. System, Inc.

Last year I.C. System recovered an all time record of \$22.6 million in delinquent accounts. Untold thousands more were recovered by association members themselves, at no charge, using ideas and tools provided by the company. If you are not already enrolled, contact the Society office to learn how I.C. System helps members help themselves.

INDIANA SOCIETY OF PROFESSIONAL LAND SURVEYORS TO HOLD 27TH ANNUAL CONVENTION IN FEBRUARY, 1979

Plans are well underway for the 27th Annual Convention of the Indiana Society of Professional Land Surveyors to be held Thursday and Friday, February 15th and 16th, 1979, at the Airport Hilton Inn, Indianapolis, Indiana.

Thursday's program will consist of multiple workshops with registrants being able to attend any two. Continuing Education Units will be awarded for attendance. The following subjects will be covered.

1. Metrication in Land Surveying.
2. Hydrographic Surveying.
3. A Study of Liability of a Land Surveyor

Friday's program will consist of shorter presentations on the following subjects:

1. Sewer Design in the Ten-State Standards.
2. Safety and the Surveyor
3. Application of Photogrammetry to Surveying.

The annual business meeting will be held during the Friday Session.

The social aspect of the convention has not been overlooked. An informal gathering Thursday evening with a buffet supper has been planned and to top the convention off, a Luau has been planned for Friday evening.

The ladies have not been forgotten, a varied and diversified Ladies Program is also in the planning.

Saturday morning will probably be set aside for Committee meetings and the Board of Directors meeting.

For additional information, registration blanks and fee schedules, contact ISPLS 3919 Meadows Drive, Suite 103, Indianapolis, IN. 46205, Telephone -- Area Code 317-545-8907

INITIAL POINT MONUMENT

Indiana Land Marks Inc. will dedicate a new Monument commemorating the location of the stone from which most of the land in Indiana is located. This monument will be a replica of the one they dedicated in 1974 which was vandalized.

The 1974 Monument was located near the old stone marking the point of beginning which is the Intersection of the base line and the 2nd Principal Meridian.

The new Monument will be located on the Court House square in Paoli, which is about six miles north of the point of beginning. The dedication was to take place at 2:00 P.M. (EST) on Sunday, September 10th at the Court House square in Paoli. The Public is invited.

On June 19th of this year the Board of Directors of the Indiana Society of Professional Land Surveyors was officially made aware of vandalism at the Initial Point monument and park just south of Paoli. This notification was made by Indiana Historical Landmarks, Inc., the nonprofit organization that worked with I.S.P.L.S. a few years ago to construct the monument. I.H.L. has completed much legwork in planning a new marker less prone to vandals, and also in raising over \$2000 from local sources.

Their suggested donation of \$1000 appears to be an appropriate contribution to this cause from I.S.P.L.S. Your board of directors voted to solicit these unappropriated funds through a special mailing to the membership. If you have not contributed, please do so!

The following ISPLS items are available for purchase from Society Headquarters in Indianapolis:

- Public Relations Brochures (20 for \$1.00)
- Careers in Surveying and Mapping booklet (\$.50 each)
- 1978 Roster of ISPLS Members (\$1.00 members/\$5.00 non-members)
- Past issues of the Hoosier Surveyor newsletter (\$1.00 each)

NEW Hewlett-Packard 3808A MEDIUM RANGE Distance Meter



- 10 km (6.25 miles) Range
- Easy to Use
 - Electronic Aiming
 - One Pushbutton Operation
 - Automatic Readout
- Tracking
- Digital Output
- Complete Instrument Self-Check
- Optional Horizontal Angle Base

**7301 NORTH SHADELAND AVENUE
INDIANAPOLIS, INDIANA 46250
(317) 842-1000**

HEWLETT  PACKARD

Sales and service from 172 offices in 65 countries.
P.O. Box 301, Loveland, Colorado 80537

In surveying, expect HP to set the standards

PHOTO HIGHLIGHTS OF GURDON WATTLES WORKSHOP

MAY 12 - 13, 1978

Abe Martin Lodge
Brown County State Park
Nashville, Indiana



Gurdon Wattles, left, of California being thanked by ISPLS president Roger Woodfill for an outstanding two-day workshop for Indiana land surveyors.



Gurdon Wattles, a national authority on many land surveying topics gave surveyors a lot to think about in the comprehensive workshop which touched on so many areas of timely interest.



Eighty-two surveyors took advantage of the opportunity to attend the Wattles workshop. He is the author of the valuable textbooks on Writing Deed Descriptions and Survey Drafting.



SUSTAINING MEMBERS

The following are sustaining members of the Indiana Society of Professional Land Surveyors. The Society appreciates their continued participation and encourages your support of these firms.

AIR MAPS, INC.
336 Jay Dee St.
Elkhart, IN 46514

CHICAGO AERIAL
2140 S. Wolf Road
DesPlaines, IL 60018

DICKERSON AERIAL SURVEYS
729 S. Fourth Street
Lafayette, IN 47905

ELLERBUSCH INSTRUMENT CO.
4509 Vince Street
Cincinnati, Ohio 45217

HARRISON MARKER & INSTRUMENT CO.
P. O. Box 588
Anoka, Minnesota 55303

HICKERSON INSTRUMENT CO., INC.
6009-11 E. 34th St.
Indianapolis, IN 46226

G. LENGEMANN CO.
2314 N. Fifth St.
Niles, Michigan 49120

NATIONAL SURVEYING INSTRUMENTS, INC.
4050 W. Parker Ave.
Chicago, IL 60639

SCHONSTEDT INSTRUMENT CO.
1775 Wiehle Ave.
Reston, VA 22090

GETTING THE MOST OUT OF CONVENTION EXHIBITS!

By Bob Cochran, Hewlett-Packard Co., Midwest Sales Region, St. Louis

Has this happened to you? You're at a Surveyor's Conference. The workshop session has just broken and you head for the exhibits.

The hall is crowded. You wander down the aisle, glancing in the various booths. Something catches your eye, and you'd like to know more.

But the booth may be crowded, or the representative in the booth seems distracted. So you move on, making a mental note to return.

Or you may have thought "I'd probably ask a dumb question and embarrass myself." Or, "They're not interested in me. I'd be wasting my time."

Let me give you a few thoughts about these situations. I believe they happen alot, because I work in one of these booths.

1. Remember this: The exhibitors pay money (sometimes a good deal) for the privilege of being there. So did you. The thought that the exhibitor isn't interested in you is dead wrong.
2. Ask questions! What is it? What does it do? What can it do for me? In the exhibits you see everything from snake-bite kits to computers with 20-foot-square plotters. Remember: THERE ARE NO DUMB QUESTIONS:
3. Try to spend some time in each booth. Even if the products don't interest you at the moment. You never know when you might require a product or service. At worst, try to get some literature for future reference.
4. If some product or service does strike a chord, ask for a demonstration or discussion. You're not intruding; that's why the exhibitors are there.
5. If a particular exhibit is crowded, and so is your schedule, ask for an after-hours appointment. Most of the representatives are staying in the same hotel. Sometimes a demonstration or discussion in the peace and quiet of the empty exhibit area is the most rewarding.
6. Ask the representative to add your name to the company's mailing list. Most firms have periodic information they want to tell you about. Also, you are made aware of new products and services, special sales, price changes, etc. It sometimes comes as a shock to find out the item you want has doubled in price.

We're all here to serve you. The mountain comes to Mohammed and vice versa at the convention. Make the most of it!

By the way, if you don't attend Surveyors' Conventions, that's sad. We have a blast!

Hewlett-Packard's newest programmable surveying calculator system.

A calculator almost as portable as HP pocket calculators, but with the problem solving power of a minicomputer to handle your surveying computations.



**7301 NORTH SHADELAND AVENUE
INDIANAPOLIS, INDIANA 46250
(317) 842-1000**

HEWLETT HP PACKARD

Sales and service from 172 offices in 65 countries.
P.O. Box 301, Loveland, Colorado 80537

In surveying, expect HP to set the standards.

HP9815A Surveying Software

Complete integrated software for virtually all your surveying computations.

Volume 1	Volume 2
Programs for general computations including:	Interlinked programs for field reduction and design including:
Triangle Solutions	Field Data Traverse
Curve Solutions	Field Bearing Traverse
Intersections	Radial Surveying
Curve Layout	Transformation
Spiral Curve Layout	Coordinate Geometry with:
Vertical Curves	Traverse
Line Layout	Inverse
EDM Slope Reduction	Bearing-Bearing Intersect
Taping Reduction	Bearing-Distance Intersect
Resection	Distance-Distance Intersect
Stadia Reductions	Sideshots
Three Wire Leveling	Area
Solar Observation	Enter & Assign
Field Angle Check	Curve Computations
Coordinate Transformations	Coordinate List
State Plane Coordinates	Point to Point Area
Average End Area	Radial Stake-out
Borrow Pit	Lot Summary
Map Check	Predetermined Area
	Point to Point Angles
	Auto Traverse
	Street Corner
	Street Intersection
	Cul-de-sac
	Right of Way
	Offset from a Line
	Circle Thru 3 Points
	Tangent to a Circle
	Tangent to Two Circles
	Re-number



**Harrison
also has an
economy line
of markers**



You've heard the proven advantages of Harrison markers. Permanence—unique design—intense magnetic field—low price. But did you know by using the Slimline Harrison the price is even lower. Also Slimline is smaller in diameter, therefore lighter and easier to carry.

If your budget suggests that small is big, consider Slimline. Write or call for information.

**HARRISON
marker and
instrument CO.**

Box 588, Anoka, MN 55303
Telephone: (612) 421-1445

THE LAND INFORMATION INSTITUTE

The Organizational meeting of a new society, The Land Information Institute, was held on March 4, 1978, at the Cosmos Club, in Washington, D.C. At this meeting the Board of Directors for the Institute was elected and the prospectus outlining the purposes of the institute was endorsed by the Charter members present.

The Land Information Institute resulted from the symposium on User Requirements for Land Records and Resource Information Systems at the University of Maine in August 1976. Approximately 100 Charter members had forwarded donations for the Institute prior to the organizational meeting.

The prospectus of the Land Information Institute lists not only the objectives of the Institute but also includes a statement of principle regarding the purposes of the Institute. The following are excerpts from the prospectus:

I. STATEMENT OF PRINCIPLE

An understanding of the human relationship to and dependence upon the land is fundamental to the decision-making processes in the political, legal, economic, social and environmental fields affecting the quality of human existence.

The pursuit of new knowledge regarding this relationship and the education of the public, as well as those responsible to the public, is the most effective way to bring about the institutional changes necessary to improve these decision-making processes.

The Land Information Institute is an organization of individuals with a wide variety of professional and academic skills who are dedicated to developing and promoting integrated systems for gathering, qualifying, storing, and retrieving non-confidential data concerning the land and its resources, along with data-information conversion systems, to enhance the ability of people to use planet Earth in a manner to ensure the survival of the environment and the best feasible quality of life for the human race.

II. OBJECTIVES OF THE LAND INFORMATION INSTITUTE

A. Information Exchange

- 1. To maintain a clearing house and depository that actively circulates references to current projects, publications, etc., providing information on the philosophy, current status, proposed projects and legal requirements of modern land information systems.
- 2. To establish the identity of the Land Information Institute with the public and with officials who should be using its services, and to generate requests for assistance.
- 3. To provide referrals to qualified experts, informally, upon request.
- 4. To provide a network of contacts to maintain technical and multidisciplinary communications among the organizers, collectors, and users of land and resource information.
- 5. To publish a periodical newsletter, and sponsor a professional journal.

B. Education

- 1. To promote better understanding of the concepts of land information systems among potential users and beneficiaries.
- 2. To foster and sponsor seminars and other programs that prepare the individuals who must provide technical and policy leadership in organizing modern land data systems.
- 3. To foster viable university level curricula in land information systems.

C. Research

- 1. To develop in-depth analyses of the potential impact of legislative and administrative reforms upon traditional land tenure arrangements.
- 2. To resolve technical problems relating to land information system development.

- 3. To identify sources of funding to support research and possibly act as a contracting agent or liaison between potential funding parties and researchers.
- 4. To supply task forces to work on specific problem oriented research projects.
- 5. To assist in the development of background and guidelines for pursuit of the additional objectives of the Institute listed under Education and Information above.

III. OPERATING POLICIES

It shall be the policy of the Land Information Institute to cooperate with other interested organizations and institutions toward interdisciplinary acceptance and promotion of those objectives among representative systems suppliers, administrators, and users.

BOARD OF DIRECTORS

The Board of Directors for the Land Information Institute presently consists of the following:

John Agnew,	Ontario,	Systems Analyst
MacDonald Barr,	Massachusetts,	Public Administrator
William Chatterton,	Wisconsin,	Lawyer
Gerald Clohecy,	New Hampshire,	Surveyor
Earl Epstein,	Wisconsin,	Lawyer
William Fowlkes,	Texas,	Title Insurer
Edith Holland,	New Hampshire,	Public Administrator
John McLaughlin,	New Brunswick,	Surveyor
Alec McEwen (Chairman),	Ontario,	Lawyer
Fritz Petersohn (Vice-Chairman)	Massachusetts,	Surveyor
John Rahenkamp,	Pennsylvania,	Planner
Willis Roberts,	New Brunswick,	Public Administrator
Ronald Scott,	North Carolina,	Planner
James Stem,	Maryland,	Surveyor
David Tyler,	Maine,	Surveyor

OTHER INFORMATION

Membership in the Land Information Institute is available to interested persons in a current annual fee of \$25. It is anticipated that the Institute's by-laws and regulations regarding membership will be available early in 1979. A newsletter will be prepared and distributed to the membership, and it is anticipated that a journal will be forthcoming shortly. Memberships are now being accepted.

For further information contact:

L. Settingington, Secretary,
Land Information Institute,
Box 4614, Station E,
Ottawa, Ontario.
K1S 5H8

The Indiana State Board of Registration for Professional Engineers and Land Surveyors is seeking to fill two vacancies as follows:

Board Secretary (\$20,000 to \$26,000)
Field Representative (\$16,000 to \$20,000)
Applicants should be registered professional engineers.

Apply to: B.T. Loeffler, Secretary
State Registration Board
1021 State Office Building
Indianapolis, Indiana 46204

ACSM LAND SURVEYING EXCELLENCE AWARD TO BE ENHANCED

The ACSM Land Surveying Excellence Award will receive increased publicity and enhancement as a result of an agreement between ACSM Land Surveys Division and Technical Advisors, Inc. The highlights of the agreement were made public in a joint announcement by Land Surveys Division Chairman John G. McEntyre and Edwin W. Miller, President of Technical Advisors, Inc. (TA), Wayne, Michigan following approval of the agreement by the Land Survey Division Executive Committee at its June meeting in Albany, New York.

Under the agreement, TA will actively publicize the Award, created "in appreciation of continued efforts to advance the profession of Land Surveying." In addition, TA has agreed to underwrite the cost of the Award plaques, now borne by Land Surveys Division, and to supplement the annual Award with an honorarium of \$500. TA will have no involvement in the selection of the Award Committee or in the determination of the Award recipient. The Land Surveying Excellence Award Committee is appointed by the Chairman of Land Surveys Division and is responsible for selecting the recipient from persons formally nominated by ACSM Sections and Affiliates. It is expected that TA's publicity campaign will result in an increase in the number of nominations for the Award, thereby making it a truly national Award. In addition, it is hoped that the publicity will promote interest in the Sections, Affiliates and Land Surveys Division of ACSM.

O.J. Woodrow, Jr., Chairman of the Land Surveying Excellence Award Committee issued a call to all ACSM Sections and Affiliates to submit nominations of persons considered by those organizations to be possible recipients of the 1979 Award. He asked that formal nominations be addressed to him at P.O. Box 526, Jackson, Mississippi 39205 and sent in time to be received by December 15, 1978. Nominations received after this date will not be considered. Mr. Woodrow noted that nominations are not restricted to surveyors per se, but are open to anyone who makes or has made an outstanding contribution to the field of Land Surveying. The nominee may be an attorney, educator, cartographer, politician, title examiner, historian, etc.

Each nomination must include a narrative giving the reasons why the sponsoring organization feels its nominee is deserving of such honor and contain specifics as well as the usual general plaudits. In addition, biographical data is to be furnished for use in the Award presentation should the nominee be selected to receive the Award. The nomination must be signed by two or more officers of the sponsoring organization.

Mr. Woodrow stated that the nominee does not have to be a member of ACSM and that the accomplishments for which the nominee has been chosen need not have occurred during the current or immediately preceding year. Mr. Woodrow also noted that the Awards Committee may decide that no Award will be given in a particular year if no sufficiently worthy candidate is nominated.

As a possible help to organizations desiring to prepare nominations, Mr. Woodrow said that he would be pleased to furnish a copy of the presentation made in behalf of a previous Award winner.

The 1979 Land Surveying Excellence Award is scheduled to be presented to its recipient at the ACSM Awards Meeting during the ACSM-ASP Convention to be held at the Washington Hilton Hotel, Washington, D.C., March 18-23, 1979.

LAND SURVEYING EXCELLENCE AWARD Land Surveys Division, A.C.S.M. Past Recipients

1971 Arthur J. McNair, Ithaca, New York
James A. Thigpen III, Jacksonville, Florida
Gaines A. Stout.

1972 Hobart B. Hyatt, Alaska
Kenneth S. Curtis, West Lafayette, Indiana
Lamon L. Moody, Jr., Baker, Louisiana
Max A. Mehlinger, Little Rock, Arkansas

1973 Daniel Kennedy, Rolla, Missouri
John McMahon, Lansing, Michigan

1974 Clair V. Mann, Rolla, Missouri

1975 Percival "Tom" Sprague
Beaver Dam, Wisconsin

1976 Liewellyn T. Schofield
Framingham, Massachusetts

1977 Edwin R. Brownell
Miami, Florida

1978 Carlisle Madson
Hopkins, Minnesota
L. G. Sturgill
Charleston, West Virginia

G. Lengemann Company



We are distributors for;

Kern; Wild; Lietz; K & E; David White; Gurley; Nikon; Geotec; Dietzgen;

Shonstaedt magnetic locators

Aqua Valve Box locators

Chicago Steel tapes

Lufkin Tape measures

Plastic flagging, spray paint, range poles, level rods.

Hand levels, PK Nails, Rolatapes, Lumber Crayons, Safety Equipment, Traffic Cones.

Instrument Rentals including;

E.D.M. Measuring Equipment

Lease Purchase available

SERVICE IS OUR BUSINESS

Complete service and repair on all makes and models of surveying instruments specializing in repair of dropped theodolites and automatic levels.



2314 No. Fifth St. • Niles, Michigan 49120 • 616-684-2116
Off Boys Ranch Rd. • Altoona, Florida 32702 • 904-669-4991

Complete Repair Service On All Types and Makes of Surveying Instruments in Both Locations

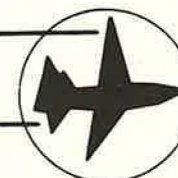
AERIAL TOPO- MAPPING

AIR MAPS, INC.

55316 JAY DEE STREET ELKHART, INDIANA 46514

PHOTOGRAMMETRIC AND
AERIAL PHOTOGRAPHIC
SERVICES

TELEPHONE 219
293-6423
293-5242



INDIANA SOCIETY OF PROFESSIONAL LAND SURVEYORS, INC.

3919 MEADOWS DR SUITE 103 INDIANAPOLIS, INDIANA 46205
(317) 545-8907



Cut-off scores for these examinations were set by the Board to correspond to the nation-wide levels recommended by the National Council of Engineering Examiners.

The Board authorized the Secretary to obtain an explanation of his actions from a Land Surveyor applicant who apparently is practicing illegally from the information shown on his application.

The next certificate presentation is tentatively scheduled for November 17, 1978.

Members of the Board appreciated a visit to the Board Office of a group of officers and members of the Indiana Society of Professional Land Surveyors who participated in a wide-ranging discussion of enforcement and professional activities.

At the Board meeting of August 25, 1978, the Board acted on the following applications:

PE Accepted by Comity	.26
PE Accepted by Comity Conditionally	.10
PE Admitted to Examination	.25
PE Admitted to Examination Conditionally	.8
PE Denied for Examination	.7
Total	.86

LS Admitted to Examination	.4
LS Denied for Examination	.3
Total	.7

TOTAL .93

The next Board Meeting will be November 17, 1978. The next examination will be held November 3 and 4, 1978.

Mr. R. L. Meek was awarded a Distinguished Service Award with Special Commendation by the National Council of Engineering Examiners at the Annual Meeting of August 6 - 9, 1978.

The citation is as follows:

"ROBERT L. MEEK, who has served the Indiana Board for 23 years, received the Distinguished Service Certificate in recognition of his outstanding service to his state board and the Council on August 20, 1970. Since receiving that award, he has continued to serve on the Indiana Board and has served for 5 years on the Council's Model Law Revision Committee - three years as a member, one as Vice-Chairman and one as Chairman. In addition, he has served as a Consultant to the Uniform Laws and Legislative Guidelines Committee. In recognition of his faithful service on numerous committees, he received the Award of Merit from the Central Zone in 1973. Under his able leadership, the Model Law Revision Committee recommended and received Council approval for the addition of alternate sections to the 1977 revision of NCEE's guide for the preparation of engineering and land surveying registration legislation."

Mr. B. T. Loeffler was awarded:

"The Central Zone of the National Council of Engineering Examiners "Award of Merit" for outstanding service to the engineering profession is presented to Mr. Bernard T. Loeffler. Mr. Loeffler performed in an exemplary manner as Zone Secretary-Treasurer from August 1973 to January 1978. His attention to detail and organization of the activities of his office has enhanced the Zone operation and aided the assumption of the office by his successors. The members of the Central Zone member iBoards, wish Mr. Loeffler well in his future endeavors, given this 7th day of August, 1978, at Louisville, Kentucky."

The following books are available for purchase from Society Headquarters in Indianapolis:

- ➔ 1. Moyer and Fisher, Land Parcel Identifiers for Information Systems, 1973, \$7.50
- ➔ 2. Wattles, Writing Legal Descriptions, 1976, \$20.00
- ➔ 3. Turner, Metrics for the Millions, 1974, \$3.95
4. Skelton, Boundaries and Adjacent Properties, 1930, (Reprinted), \$20.00
(An additional \$1.50 should be included to cover sales tax, postage, and handling)

MEMBERSHIP APPLICATION

Member____, Junior____, Associate____, Student____, (check one.)

Annual dues payable on February 1, of each year are for: Member \$50.00 or Associate \$30.00, Junior \$25.00 and Student \$5.00.

Name_____ Position_____

Home Address_____ Employed by_____

City_____ Zip_____ Business Address_____

Telephone (include area code)_____ City_____ Zip_____

Registration Status: (Give Reg. No. and Branch)

(CHECK ONE)

Business Phone (include area code)_____

S.I.T._____ R.L.S._____ R.P.E._____

Member of American Congress on Surveying and Mapping_____ Yes_____ No_____

Member of a local chapter of ISPLS Inc.?_____ Yes Which Chapter?_____ No_____

MEMBERSHIP CLASSIFICATIONS

MEMBER ---- Registered in Indiana as Land Surveyor. Member is entitled to vote, hold office, and participate fully in the Society.

JUNIOR ---- Actively pursuing the goal of becoming registered as a Land Surveyor. Junior is entitled to vote and participate fully in the Society, but is not entitled to hold office.

ASSOCIATE -- Associated or affiliated with the Land Surveying Profession but is not qualified to become registered. Associate is not entitled to vote or hold office, but will receive newsletter and will be invited to participate in meetings.

STUDENT ---- Same eligibility requirements as for Junior, except membership may be used only by full time students, and for four years only. Students are entitled to the same benefit as Associates.

PUBLICATIONS AVAILABLE FROM
ISPLS HEADQUARTERS

I.S.P.L.S. Surveying Publication Series

Quantity	Publication	Cost to Member	Cost To Non-member
_____	Manual No. 1 - <u>The Perpetuation of Corners in Indiana</u> by John G. McEntyre (June 1972), 100 pages.	\$ 5.25	\$ 7.50
_____	Manual No. 2 - <u>The Indiana State Plane Coordinate System</u> by Kenneth S. Curtis (June 1974), 196 pages.	\$ 5.25	\$ 7.50
_____	Manual No. 3 - <u>Law and Surveying</u> (including Surveyor's Guide to the use of a Law Library and Indiana Statutes related to Land Surveying), by Darrell R. Dean & John G. McEntyre, (April, 1975), 120 pages.	\$ 5.25	\$ 7.50
_____	Manual No. 4 - <u>Meridian Determination by Solar and Polaris Observation</u> , by Kenneth S. Curtis, (June, 1975), 194 pages.	\$ 5.25	\$ 7.50
_____	Manual No. 5 - <u>Computer Programs (HP-65 Documentation)</u> by Charles C. Campbell (February 1976), 219 pages and contains 50 surveying programs.	\$30.00	\$45.00
_____	Manual No. 6 - <u>Establishment of Boundaries by Unwritten Methods</u> by John G. McEntyre (June 1976), 171 pages.	\$ 5.25	\$ 7.50
_____	Manual No. 7 - <u>Optical Distance Measurement</u> by Kenneth S. Curtis (June 1976), 169 pages.	\$ 5.25	\$ 7.50

\$1.50 postage to be added to each order.

Name _____

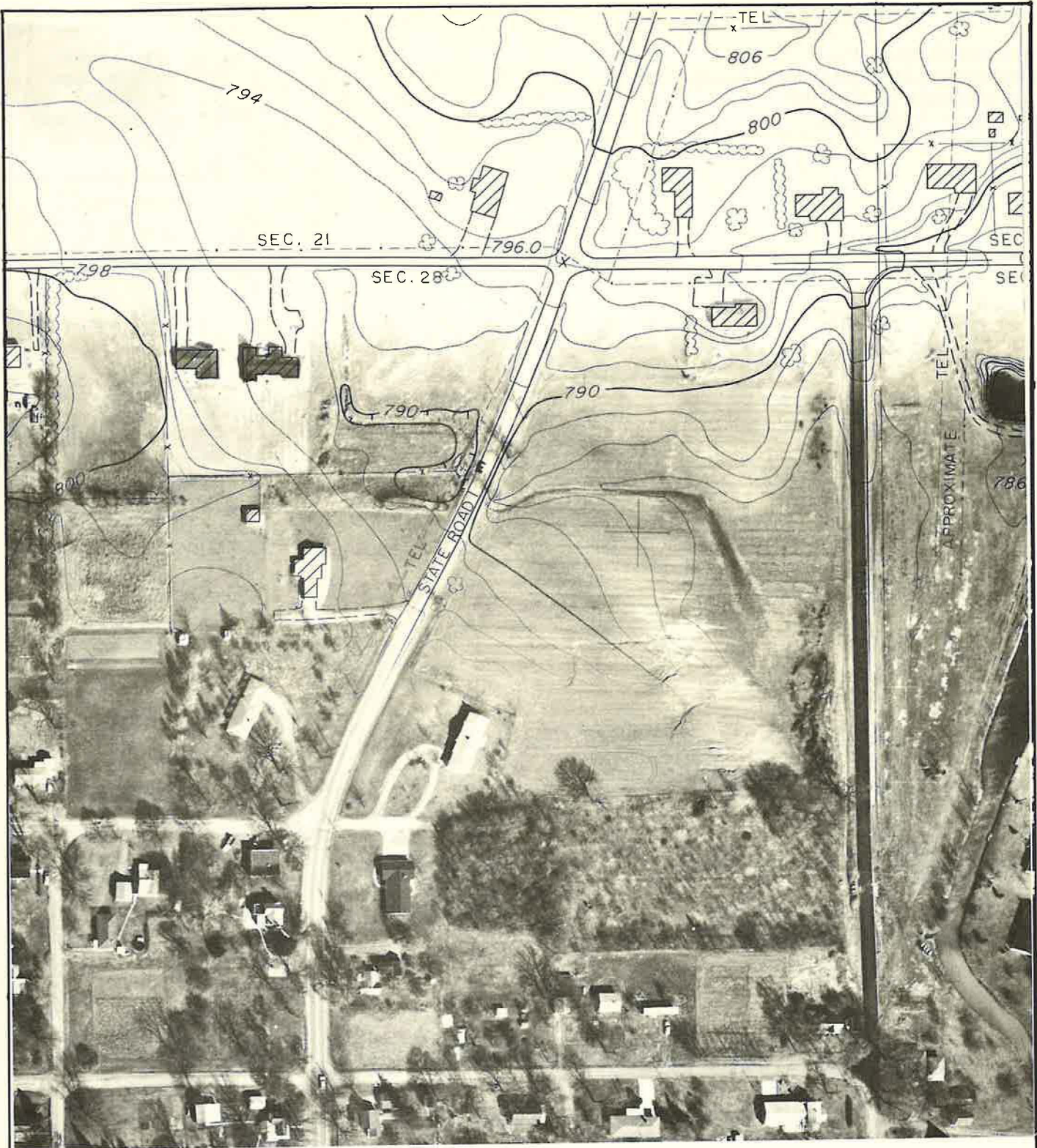
Street _____

City _____ State _____ Zip _____

Member ISPLS yes _____ no _____

Total Amount Enclosed \$ _____

Mail To: Indiana Society of Professional Land Surveyors, Inc.
3919 Meadows Drive, Suite 103
Indianapolis, Indiana 46205



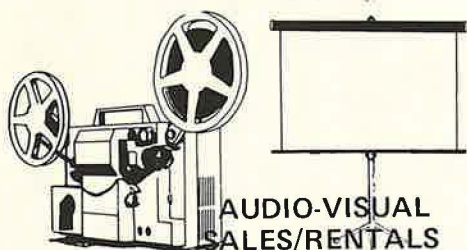
DICKERSON AERIAL SURVEYS

729 S. FOURTH STREET, LAFAYETTE, IN 47905 317-474-9279

BRIAN M. DICKERSON PE, LS

THE HOOSIER SURVEYOR
Indiana Society of Professional Land Surveyors, Inc.
3919 Meadows Drive, Suite 103
Indianapolis, Indiana 46205

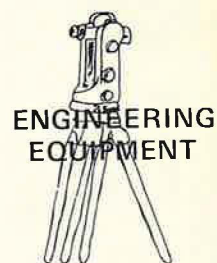
Bulk Rate
U. S. Postage
PAID
Indianapolis, Ind.
Permit No. 4056



**AUDIO-VISUAL
SALES/RENTALS**



**DRAFTING
SUPPLIES AND
EQUIPMENT**



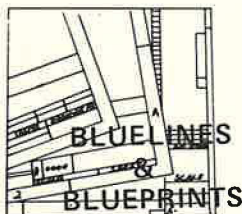
**ENGINEERING
EQUIPMENT**

MARBAUGH ENGINEERING SUPPLY CO., INC.

121 West North Street, Indianapolis, Indiana 46204

Phone: 632-4322

MARBAUGH... A NAME YOU CAN DEPEND ON.



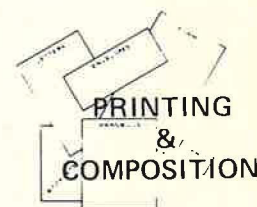
**BLUE LINES
&
BLUEPRINTS**



REPRODUCTIONS



MICROFILMING



**PRINTING
&
COMPOSITION**