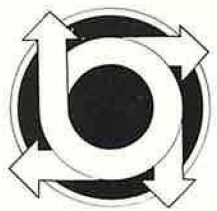


# SURVEYOR

# HOOSIER



**Indiana Society of  
Professional Land Surveyors, Inc.**  
VOL. 1 NO. 2 DECEMBER 1974



Register Now For The  
ISPLS Annual Convention  
To Be Held At Stouffer's Indianapolis Inn  
January 23, 24 & 25, 1975



# New HP Distance Meter... New Value, \$3,495\*

The HP 3805, a new Distance Meter from Hewlett-Packard, gives you a leg up in capability... a station back in price. From its safety yellow case to its built-in computer, the HP 3805 is everything you told us an electronic distance meter should be. Check it out: On features. On price. On performance. We think you'll agree, it's a remarkable instrument. And the new low price of \$3,495\* makes it an incredible bargain.

**Automatic Readout cuts measurement time to six seconds.** Zero in on your target, then read your distance on the digital display. That's all there is to it. At the flip of a switch, you can observe the distance in feet (up to one mile) or metres (1.6 km.). The secret to this quick response and simple operation is a computer. Built right into the HP 3805, it not only handles the measuring job for you—but continually monitors the meter's performance to assure measurement confidence, always. A computer. To make your job easier, faster, more accurate.

**On the lighter side,** the HP 3805 will open a whole new dimension in speed mobility, and endurance

**For new standards in Surveying Solutions, think Hewlett-Packard**



Sales and service from 172 offices in 65 countries.  
P.O. Box 301, Loveland, Colorado 80537

for you and your crew. Thanks to modern electronic circuits, the complete HP 3805 weighs but 19 pounds on the tripod—including the optional Battery Pod. (This lightweight pod snaps into the belly of your HP 3805 to give you a cable-free power source.) But the best news for you back-country scramblers is our standard field-packable soft case that adds only 5 pounds.

**The HP 3805 is available now.** For full information or a hands-on demonstration, call your local HP Sales Office or send us the coupon. Ask about HP's full line of surveying calculators, too. From the little giant pocket calculators to powerful programmable models, there's a quick solution for every surveying problem.

Domestic USA price only 09/77/8

HP Civil Engineering Division  
P.O. Box 301, Loveland, Colorado 80537 IN

I would like to order a new HP 3805 Distance Meter. Contact me immediately.

I would like a demonstration of HP Surveying Products:

Distance Meters     HP Programmable Calculators

Please send me more information on Hewlett-Packard Surveying Products.

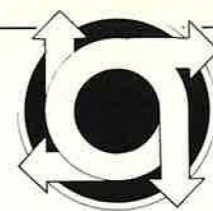
Name \_\_\_\_\_

Title \_\_\_\_\_ Phone \_\_\_\_\_

Company \_\_\_\_\_

City \_\_\_\_\_

State \_\_\_\_\_ Zip \_\_\_\_\_



## HOOSIER SURVEYOR

VOLUME 1 NO. 2 DECEMBER 1974

### OFFICERS FOR THE YEAR 1974

**President**  
John G. McEntyre  
160 Pathway Lane  
West Lafayette, Ind. 47906  
Tel: 463-7468

**President-Elect**  
William S. Tanke  
R.R. 4, Tower Road  
Valparaiso, Ind. 46383

**Vice President**  
Brian M. Dickerson  
2505 Cambridge Road  
Lafayette, Ind. 47905

**Secretary-Treasurer**  
Zohab Tazian  
11224 Kings Crossing  
Fort Wayne, Ind. 46805

**Directors**  
Wesley Day  
144 Whiteland Road  
Whiteland, Ind. 46184

Charles Campbell  
9841 E. 21st St.  
Indianapolis, Ind. 46229

Rex Bowman  
3514 E. Indianbrook Dr.  
Lafayette, Ind. 47906

Carl Anderson  
620 E. Fordice St.  
Lebanon, Ind. 46052

Gene Darnall  
707 Clifty Drive  
Columbus, Ind. 47201

James Dankert  
5920 N. Tuxedo St.  
Indianapolis, Ind. 46220

**Newsletter Editor**  
Kenneth S. Curtis  
School of Civil Engineering  
Purdue University  
West Lafayette, Ind. 47906  
Tel: 494-5684

**Residence:**  
2204 Happy Hollow Road  
West Lafayette, Ind. 47906  
Tel: 463-7452

**Office:**  
School of Civil Engineering  
Purdue University  
West Lafayette, Ind. 47906  
Tel: 494-1480

**Executive Secretary**  
Thomas V. McComb  
111 North Capitol Ave.  
Indianapolis, Ind. 46204  
Tel: 634-6206

## Committee Assignments

### Local Chapters and Functional Sections

John V. Schneider (Chairman)

John E. Beals

H. R. Blankenbeker

William S. Pang

Dorman Miller

Gene W. Darnall

William S. Tanke

Larry E. Vanosdol

Walter J. David

A. D. Ruth

### Budget and Finance

Zohrab K. Tazian (Chairman)

Brian M. Dickerson

William S. Tanke

### Constitution and By-Laws

Andrew J. Sobiech (Chairman)

Lawrence W. Trueblood

James K. Vinton, Jr.

### Education Committee

Roger Woodfill (Chairman)

Charles A. Budnick

John E. Fisher

Lloyd H. Kemmer

### Ethics

Wesley L. Day (Chairman)

James E. Dankert

Bradford R. DeReamer

Glenn D. Warner

### Fees and Salaries

Vincent J. Schneider (Chairman)

Gene W. Darnall

Richard Stoepelwoerth

### Interprofessional Liaison

William S. Tanke (Chairman)

John E. Beals

Charles C. Campbell

### Legislative

Nelson L. Prall (Chairman)

Wesley L. Day

Orwic A. Johnson

David L. South

### Membership

Daniel J. Haskett (Chairman)

Richard Beaman

Dennis L. Grumpp

### Perpetuation Program

Carl M. Anderson (Chairman)

William H. Land

Steve W. Manich

John G. McEntyre

### Program

William S. Tanke, (Chairman)

Lloyd H. Kemmer

All members of the ISPLS Board

Ken Curtis

### Publications

K. S. Curtis (Chairman)

Rex M. Bowman

### Registration

Richard J. Beck (Chairman)

David South

Richard Taylor

### Survey Standards

Edgar T. Fleener (Chairman)

Warren Marks

Alan Stanley

### Public Relations

Neil Franklin (Chairman)

Robert Bigelow

K. S. Curtis

Christopher R. Lewis

### Survey Manual

Warren Marks (Chairman)

John G. McEntyre

### Tape Standardization

Ralph K. Bigman (Chairman)

Robert B. Kelker

### Distinguished Service Award

The Hoosier Surveyor is published quarterly by the Indiana Society of Professional Land Surveyors, Inc. to inform land surveyors and related professions, government officials, educational institution, libraries, contractors, suppliers, and associated businesses and industries about land surveying affairs.

Editorial Advertising offices: 111 North Capitol Ave., Indianapolis, IN 46204 (Telephone: 317 634-6206). Advertising rates, closing dates, circulation data on request. Contributed articles, photographs subject to space limitations.

Kenneth S. Curtis  
Editor

Greg Schenkel  
Assoc. Editor

# PRESIDENT'S COMMENTS



No membership campaign is successful without membership participation. I urge each member of our Society to contact eligible members in their area personally to urge them to affiliate with our State Society. By the time you read these comments a membership meeting may have already been held in your area. If this meeting has been held I request each member of our Society to follow up the contact made at the membership meeting with a personal contact to urge non-members to join. Have a membership application with you during this contact. If your membership meeting has not been held yet, participate in it when it is held and again help by following the meeting by personal contact with prospective members.

There are more than 600 registered land surveyors in Indiana, eligible for membership in the Indiana Society of Professional Land Surveyors, who are NOT members. In mid-October, our Society Headquarters initiated a membership campaign directed toward these eligible members. The first step in this effort was a mailing, with application enclosed, encouraging these registered land surveyors to join our State Society.

You have many reasons to sell I.S.P.L.S. to eligible members. By being a member of I.S.P.L.S. the individual surveyor: (1) Has an opportunity to attend numerous workshops, (2) Can attend the Annual Meeting which offers several workshops, excellent technical papers, and pleasant social activities, (3) Enables the Society to maintain an office and staff to conduct our business efficiently and to maintain an effective public relations campaign, (4) Supports efforts to improve the public image

of the land surveyor, (5) Supports the all-important legislative effort in areas of interest to the land surveyor, (6) Improves communication between the state (national) and local level, (7) Receives a quarterly newsletter and an annual roster of members and (8) May purchase technical publications of the Society at reduced rates. These are a few of the reasons which you could use to convince a non-member to affiliate with our State Society. Join in the campaign to get members. We will be a more effective society with more members. We need each member's help in this membership campaign.

The Annual Meeting has evolved into an event which you will not want to miss. The details of this event are given elsewhere in this newsletter. Governor Bowen is honoring us by speaking at our Friday luncheon which is for both the ladies and the men. The program includes four timely workshops, excellent technical papers, plenty of time to visit exhibits, and an attractive social program. You are urged to bring your wives. There is a full-fledged ladies' program. Come to Indianapolis for the Annual Meeting, January 23-25, 1975 to increase your knowledge and to enjoy the excellent social events.

AIM FOR A CAREER AS A

REGISTERED LAND SURVEYOR



PURDUE UNIVERSITY now offers a full four-year professional curriculum leading to a —

**BACHELOR OF SCIENCE  
DEGREE IN  
LAND SURVEYING**

For complete information, contact:

Professor K. S. Curtis, L. S.  
School of Civil Engineering  
Purdue University  
W. Lafayette, Ind. 47907

# SURVEYORS GUIDE TO POISONOUS PLANTS

Each year many surveyors are poisoned from contact with plants they did not know were harmful. Recognition of these plants could have prevented the painful experience of severe skin inflammation and water blisters.

The skin irritant in poisonous plants is a substance called *urushiol*, found in all parts of the plant. Actual contact with this substance is necessary to produce

poisoning, but a very small amount can cause severe inflammation of the skin. The poison is easily transferred from one object to another. Clothing, instruments or other objects may become contaminated and are often a source of prolonged infection.

Smoke from burning plants carries the toxin, and can cause severe cases of poisoning.

## POISON IVY

### THE LEAVES:

Always grow in groups of three leaflets. Leaves never grow in pairs along the stem. Edges are usually smooth as shown, others are notched. Notched variety is uncommon but may be typical throughout some areas. Leaflets are green through spring and summer, colorful in early fall, with scarlet, orange, and russet shades.



### THE FLOWERS:

Small white flowers, in quite distinct clusters along slender stems that grow from the notch where the leaf joins the main stem.

### THE FRUIT:

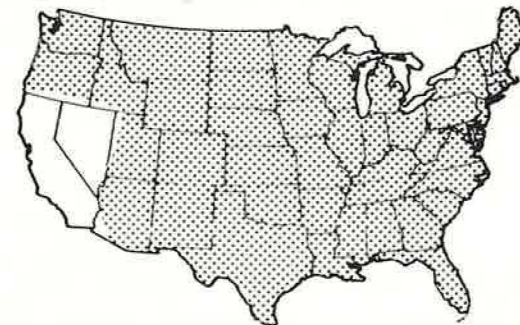
White and waxy in appearance, berry-like fruit grows in clusters and has distinct lines marking the surface, resembling the segments of a peeled orange. Fruit is round and usually smooth, but some varieties are covered with fine hairs, giving it a downy appearance.

### HOW IT GROWS:

Considered a vine, it may run along the ground, grow among shrubbery, or take support from trees, posts or other uprights. Vines develop roots that secure it to the ground or any supporting object. The dense growth of these roots often causes the vines on trees to have the appearance of a fuzzy rope.

### WHERE IT GROWS:

Plant flourishes in deep woods where soil moisture is plentiful, or in very dry soil on the most exposed hillsides. Plants are more frequently abundant along old fence rows, edges of paths and roadways, or climbing on posts and trees.



SHADING SHOWS GROWTH AREAS

## POISON OAK

Always grow in groups of three leaflets. Leaves never grow in pairs along the stem. Center leaflet resembles a small oak leaf. The side leaflets are irregularly notched. The underside of some leaves is light in color caused by the growth of fine hairs. Seasonal color changes are the same as that of poison ivy.

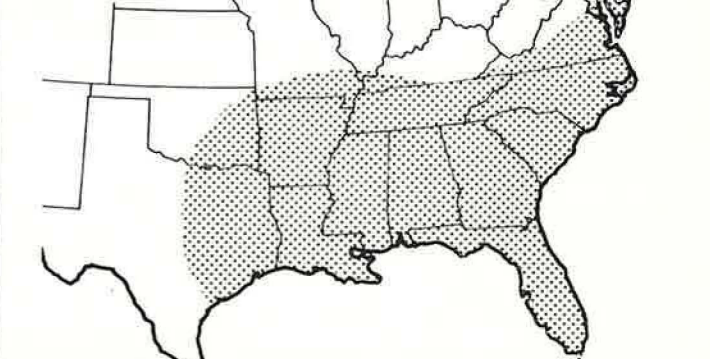


Flowers look and grow like those on poison ivy.

Fruit looks and grows like those on poison ivy, but is more likely to have a downy appearance.

Plant does not normally climb as a vine, but occurs as a low growing shrub. Stems generally grow upright. Shrubs have rather slender branches, often covered with fine hairs that give the plant a downy appearance.

Shrubs may flourish in deep woods where soil moisture is plentiful, or in very dry soil on the most exposed hillsides.



The time between contamination and the first symptoms of itching or a burning sensation varies greatly with the individual and conditions, and may develop in a few hours or even after seven days or more. The itching and subsequent inflammation that usually develops into water blisters under the skin may continue for several days from a single contamination. Persistence of symptoms

over a long period is most likely caused by new contact with plants, or by contact with previously contaminated clothing or objects.

Severe infection may produce more serious symptoms which result in much pain through abscesses, enlarged glands, fever, or other complications. In this case you should consult a physician.

## PACIFIC POISON OAK

## POISON SUMAC

### THE LEAVES:

Always grow in groups of three leaflets. Leaves never grow in pairs along the stem. Center leaflet is usually notched, and resembles a small oak leaf. Side leaflets are normally notched and sometimes resemble small oak leaves. Some plants may have leaflets with smooth edges. Surface of leaflets are glossy and uneven, giving them a thick leathery appearance.



Seven to thirteen leaflets, arranged in pairs along a central mid-rib with a single leaflet at the end. Leaflets are 3 to 4 inches long, 1 to 2 inches wide with smooth edges and have a smooth velvet-like texture. In early spring leaflets are bright orange, turning to a dark glossy green with scarlet mid-ribs in summer, then to brilliant red-orange or russet shades in early fall.



### THE FLOWERS:

Small greenish white flowers are borne in clusters on slender stems that grow from the notch where the leaf joins the main stem.

Small yellowish-green flowers are borne in loose clusters on slender stems that grow from the notch where the leaves join the main stem.

### THE FRUIT:

Greenish or creamy white, berry-like fruit grows in clusters like poison ivy. Fruit remains on plant throughout fall and winter after leaves have fallen.

Ivory white or green colored, resembling the fruit of poison ivy, except it hangs in loose clusters 10 to 12 inches in length.

### HOW IT GROWS:

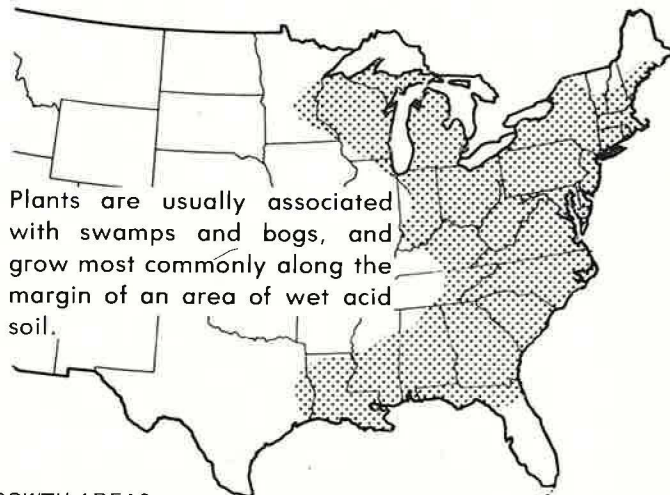
Dense upright shrub having many woody stems growing from the ground. Sometimes attaches itself to trees or other objects, but stems continue their upright growth rather than depend entirely on other objects for support. In open areas, plant grows in spreading clumps from a few feet to several feet tall.

Grows as a coarse woody shrub 5 to 6 feet high, or as a small tree that may reach 25 feet at maturity. Shrubs usually do not have a symmetrical upright tree-like appearance but tend to lean.

### WHERE IT GROWS:



Plant grows in great abundance along roadsides, in open fields, pastures, woodland areas, or on abandoned land.



Plants are usually associated with swamps and bogs, and grow most commonly along the margin of an area of wet acid soil.

SHADING SHOWS GROWTH AREAS

## Charles Campbell stricken ill

Charles C. Campbell, a member of the Board of Directors of ISPLS, was recently stricken ill in Indianapolis. As of this writing, he is undergoing further treatment in London, Ontario. For those who may care to write Charlie, his address is University Hospital, 7th Floor, Room E-17, London, Ontario N6A1B0.

## Publication Available

The ISPLS Office recently received notification of a publication which is now available to members and other interested persons. The booklet is entitled "Restoration of Lost or Obliterated Corners and Subdivision Sections", and was prepared by the U.S. Department of Interior especially for the information and guidance of county and local surveyors.

This booklet has been reprinted and may be obtained at a cost of \$1.00 per copy (including handling and postage) from the Illinois Registered Land Surveyors Association (IRLSA), P.O. Box 642, Broadview, Illinois 60153.

## Inter-Society Activity

Recently, three A/E firms were asked and submitted competitive bids on a long-range plan for the State Office Complex and on the State Office Parking Garage, both in downtown Indianapolis. This action led to the Indiana Society of Professional Engineers calling a meeting to discuss "Procurement of Professional Services".

The meeting was held Saturday, October 26, 1974. The following societies were invited to participate: Consulting Engineers of Indiana; Indiana Society of Architects; Indiana Section, American Society of Civil Engineers; Indiana Section Institute of Electrical and Electronics Engineers; Indiana Section, American Society of Mechanical Engineers, and Indiana Society of Professional Land Surveyors. Thomas V. McComb, Nelson Prall, and John G. McEntyre attended this session as representatives of ISPLS.

This group decided to draft legislation which would require negotiation of a fee with a qualified firm for professional services. Procedures are to be proposed to provide a method to select the qualified firm.

The group also discussed possible changes in the Registration Act. They decided not to attempt to make any changes in Section 20(d), the industry exemption, and to only attempt the "housekeeping" changes which were proposed last year.

## Successful Workshop Held

ISPLS, in cooperation with the Illinois - Indiana Chapter of the American Society of Photogrammetry, recently held a workshop at West Lafayette. This workshop, which attracted approximately 60 people, was conducted on November 6 and featured three distinguished speakers.

The first session featured Charles Danner of Danner and Associates (Urbana, Illinois) who spoke on the "Use of Photographic Products in Surveying and Engineering Applications." This was followed by the "Use of Photogrammetric Products in Surveying and Engineering Applications", which was given by Dr. Donald Graff of Engineer Computer Services, Ltd. (Hoffman Estates, Illinois).

After the dinner that evening, Professor Robert Miles, who is President of the Indiana Society of Professional Engineers, addressed the group on "Use of Photography in Air Photo Interpretation in Site Selection of Upland Water Storage Reservoirs."



## SUSTAINING MEMBERS

The following are sustaining members of the Indiana Society of Professional Land Surveyors. The Society appreciates their continued participation and encourages your support of these firms.

PIONEER NATIONAL TITLE INSURANCE CO.  
 ACCU-AIR SURVEYS, INC.  
 AIR MAPS, INC.  
 HEWLETT-PACKARD CO.  
 TECHNICAL ADVISORS, INC.  
 SCHONSTEDT INSTRUMENT CO.  
 HICKERSON INSTRUMENT CO., INC.  
 DICKERSON AERIAL SURVEYS  
 NATIONAL SURVEYING INSTRUMENTS, INC.  
 THE SIDWELL COMPANY

# DELEGATE'S REPORT 1974 ACSM FALL MEETING

"C'est avec grand plaisir que je souhaite une cordiale bienvenue à mes collègues, à leurs amis et à leurs familles à l'occasion du XIVième CONGRES INTERNATIONAL DES GEOMETRES.

Je suis très heureux de voir qu'un tel nombre de participants sont venus d'autres pays, et j'espère sincèrement que vous jouirez de votre séjour aux ETATS-UNIS D'AMERIQUE"

"Es bereitet mir aufrichtige Freude, Ihnen, meine werten Kollegen, Ihren Freunden und Familien, ein herzliches Willkommen zum XIV. Internationalen Kongress der Vermessungsingenieure zuzurufen. Es ist grossartig, eine so grosse Zahl von Teilnehmern aus vielerlei Laendern hier zu sehen. Ich hoffe, dass Sie alle Ihren Aufenthalt in den Vereinigten Staaten von Amerika vollauf geniessen werden."

The 1974 Fall Meeting of the American Congress on Surveying and Mapping was held September 8-13 in Washington, D.C., in conjunction with the International Congress of Surveyors. My first and most dominant impression, which will always make this Conference unique in my memory, was the constant background babble of foreign languages and English spoken in foreign accents. Representatives and their wives were here from almost every country in the world, and it was humbling to observe how adequately they communicated with each other and with me, and how inadequately I communicated with them.

It was a rare opportunity to be one of the 2000 delegates representing 50 countries, attending this International Congress. This is the 14th such meeting, the first in the United States, and since there are 39 member countries, meeting approximately every three years, I would surely have to travel a long way to attend another International Congress.

Incidentally, those first two paragraphs are the opening of Congress President W. A. Radlinski's message, translated as, "It is with great pleasure that I extend a most cordial welcome to my colleagues, their friends and families to the XIV International Congress of Surveyors. I am delighted that such a large number of participants have come from other countries and hope that you will enjoy your stay in the United States of America."

The ACSM side of the Conference was rewarding, as always. Technical sessions were interesting and informative, equipment exhibits were enticing, social events were well-planned and appealing, and the best thing of all—not surprisingly—was the conversations with a whole bunch of people who think that surveying and surveying education is the most exciting, most

meaningful way they could ever spend their lives. For the COSA delegates like me, a great amount of time was spent in committee meetings, and I have listed a few of the outstanding items abstracted from my notes of those meetings:

**Insurance:** V.O. Schinnerer & Co. has proposed a new rate structure for their Professional Liability Insurance for Land Surveyors Program. Rates will increase from 65 percent to 120 percent, depending on geographical location. Maximum coverage will be raised to 5 million dollars, and cost of defense will be included in the deductible portion.

**Ethics and Standards:** Georgia has a neat grievance committee set-up. Their's is a standing committee of three members, all past presidents. Complaints come to the state society president, who appoints an impartial investigator from a different area than the defendant. The investigator gathers facts and reports back to the president, who decides if the case should be turned over to the grievance committee. The committee, if activated, conducts a hearing with evidence and witnesses and makes a recommendation to the state society's board of direction. Disciplinary action can range up to expulsion from the state society and turning over the file to the state registration board. As much as possible, all actions are kept confidential, limited to only those who need to know.

**Continuing Education:** Recertification is still being researched, and the position seems to have softened somewhat. One question now under consideration is "Do we recommend that this system be made mandatory as a requirement for renewal of surveyors' licenses, or shall it be a program that will be sponsored and advocated by ACSM for all registered surveyors?"

**Regionalization:** There again was a lot of talk on this issue, and evidences of strong and positive actions from those areas that already have some history as a region. However, I still can't discern any long-range goals and objectives by ACSM leadership regarding regionalization.

As usual, I tried to be a creditable representative of ISPLS at this Conference, and I only know for sure of one area where I failed. Lois and I shared a banquet table with three couples from Ireland, and—despite years of practice and an intensive training session two nights previous with Tom McComb, Greg Schenkel, and various other Hoosiers—we simply were overmatched in the fields of drinking, singing, and storytelling. Next time an international reputation is at stake, you must send someone with more experience.

M. N. Franklin  
COSA Delegate

## January 23-25, 1975

Annual Meeting, Indiana Society of Professional Land Surveyors, Indianapolis, Indiana

## February 13-15, 1975

Joint Meeting, Illinois and Kentucky Surveyors, Kentucky Lake State Park, Kentucky

## March 9-14, 1975

ACSM-ASP Annual Spring Convention, Washington Hilton Hotel, Washington, D.C.

## April 14-17, 1975

North American Conference on Modernization of Land Data Systems, Marriott Twin Bridges Motor Hotel, Washington, D.C.

## FUTURE MEETINGS OF INTEREST TO LAND SURVEYORS

## "CAPITAL COMMENTS"

Your ISPLS staff is now in the full swing of managing the Society. After initially determining what had to be done and taking care of pending matters, future planning and new programs are underway.

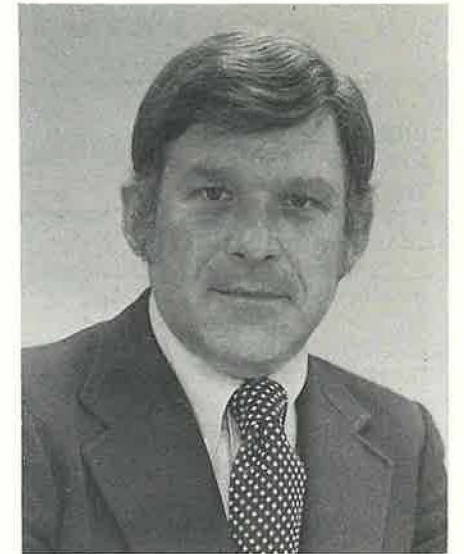
Since the last issue of Hoosier Surveyor a membership program was begun and we're happy to report the addition of 79 new members thus far. This campaign will continue on a concentrated basis through the first of the year at which time we hope to have a total of 200 new members. You can help your society by simply asking a non-member surveyor to join. In addition, we have been involved in the 1975 Convention planning, securing advertisers for publication and preparing legislation for the coming session of the Indiana General Assembly.

On October 9, 1974, ISPLS was

incorporated with the State as a not-for-profit corporation. Many benefits accrue from this change including better organization structure, perpetual organizational life and limited liability for members. We are in the process of preparing new by-laws which will be voted on by the membership at the annual convention.

Lastly, let me encourage each of you to attend the Convention January 23-25 at Stouffer's Indianapolis Inn. Your committee has planned an outstanding meeting which should be attended by every surveyor interested and concerned about improving his professional image. Also, we want to meet you and demonstrate the positive and progressive steps being taken by ISPLS which will make it the finest state professional surveyor's association in the Country.

See you at the Convention!

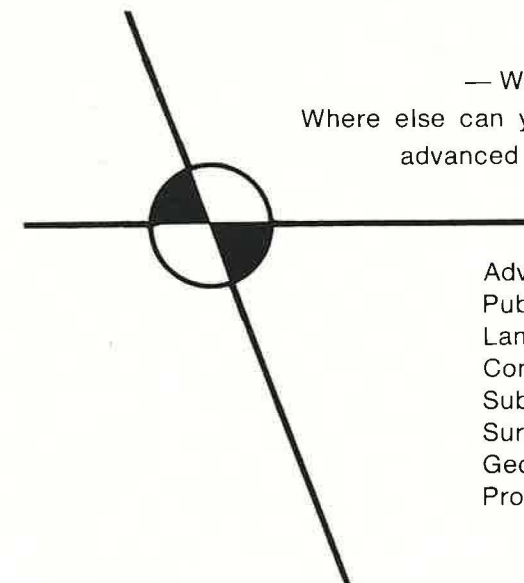


Thomas V. McComb,  
Executive Secretary

## PARTY CHIEFS! PREPARE FOR ADVANCEMENT!

— We invite comparison —

Where else can you get **600** hours of concentrated, advanced training in only 4 months?



Subject	Clock Hours
Advanced Surveying Math	35
Public Land Survey System	45
Land Boundary Surveys	100
Construction Surveying	185
Subdivision Design	100
Surveying Astronomy	20
Geodetic Surveys	40
Professional Development	75
	<u>600</u>

We have a few openings left in the advanced class starting January 13, 1975. DON'T DELAY; ENROLL NOW!

## BRINKER SCHOOL OF SURVEYING AND MAPPING, INC.

2359 Main Avenue

(303) 247-8172

Durango, Colorado 81301

# AGENDA

## 1975 ISPLS Annual Convention

### THURSDAY, JANUARY 23

8:00 a.m. - 2:00 p.m.

Registration

9:30 a.m. - 12:30 p.m.

Concurrent Workshops

A. "Stormwater Detention Storage—

How to Avoid Building the Ark"

Dr. John A. Spooner

B. "Radial Surveying"

Roger Park and Carl Anderson

12:30 p.m. - 1:30 p.m.

Buffet Luncheon (OPTIONAL)

2:00 p.m. - 5:00 p.m.

Concurrent Workshops

A. "Stormwater Detention Storage—

How to Avoid Building the Ark"

Dr. John A. Spooner

B. "Radial Surveying"

Roger Park and Carl Anderson

C. "Photogrammetry and the Land Surveyor"

Dr. G. Warren Marks

D. "Tree and Wood Identification"

Darrell Dean

\*2:00 p.m. - 3:30 p.m.

Ladies Program

"Making the Most of What You Already Have"

Mrs. Charles Padgett

6:30 p.m.

Evening Entertainment (OPTIONAL)

Black Curtain Dinner Theater

"Send Me No Flowers"

### FRIDAY, JANUARY 24

8:00 a.m. - 10:00 a.m.

Registration

8:15 a.m. - 8:30 a.m.

Announcements

8:30 a.m. - 9:00 a.m.

"Indiana v. Kentucky - Where is the Boundary?"

Representative Richard Wathen

9:00 a.m. - 9:30 a.m.

Introduction of Executive Secretary and Exhibitors

9:30 a.m. - 10:15 a.m.

COFFEE BREAK IN EXHIBIT AREA

\*9:30 a.m. - 11:00 a.m.

Ladies Program

Continental Breakfast, Fashion Show

10:15 a.m. - 11:15 a.m.

"Surveying in a Changing Society"

(Control Surveys for Urban Areas)

Captain Leonard S. Baker

11:20 a.m. - 11:50 a.m.

"Happenings in Surveying at the National Level"

Donn Pepper

\*\*12:00 Noon - 1:30 p.m.

LUNCHEON

Speaker: Governor Otis R. Bowen

1:45 p.m. - 2:30 p.m.

"OSHA Report"

Howard Wiesen, Ind. Div. Labor

\*2:00 p.m. - 5:00 p.m.

Ladies Program

Shopping Tour (Transportation Provided)

2:30 p.m. - 3:15 p.m.

"Liability Insurance"

1:45 p.m. - 3:15 p.m.

Concurrent Session

"Registration as a Land Surveyor - What Does It Take?"

Neil Franklin, Wes Day, Brad DeReamer, Bernard Loeffler

3:30 p.m. - 5:30 p.m.

ANNUAL BUSINESS MEETING

\*\*6:30 p.m. - 7:30 p.m.

Cocktail Hour (Cash Bar)

\*\*7:30 p.m. - 9:00 p.m.

President's Dinner and Entertainment

\*\*9:00 p.m. - 12 Midnight

Dancing

### SATURDAY, JANUARY 25

8:30 a.m. - 10:00 a.m.

COFFEE IN EXHIBIT AREA

\*9:00 a.m. - 11:00 a.m.

Ladies Breakfast and Program

Ruby Allen, Graphoanalyst

10:00 a.m. - 11:00 a.m.

"Re-Certification for Land Surveyors"

Professor David K. Blythe

11:00 a.m. - 12:00 Noon

"Property Law and the Land Surveyor — Some Aspects"

Professor John S. Grimes

\*Ladies Function

\*\*Ladies Included

# Registration Form

INDIANA SOCIETY OF PROFESSIONAL LAND SURVEYORS, INC. — 1975 Convention

January 23, 24, 25 — Stouffer's Indianapolis Inn

PLEASE TYPE OR PRINT NAME & Firm as you wish them to appear on your badge.

NAME \_\_\_\_\_

HOME ADDRESS \_\_\_\_\_

CITY \_\_\_\_\_ STATE \_\_\_\_\_ ZIP \_\_\_\_\_

FIRM \_\_\_\_\_

FIRM ADDRESS \_\_\_\_\_

SPOUSE'S FIRST NAME (for badge) \_\_\_\_\_

### SURVEYORS' REGISTRATION

If you register before Jan. 10  MEMBER — \$40.00  NON-MEMBER — \$50.00

After Jan. 10 Higher Fees Apply  MEMBER — \$50.00  NON-MEMBER — \$60.00

SURVEYORS' REGISTRATION INCLUDES: 2 Workshops Thursday; Technical Sessions Friday & Saturday; Coffee Breaks all three days; Luncheon Friday; President's Dinner-Dance Friday.

### SPOUSES' REGISTRATION

If you register before Jan. 10  MEMBER'S SPOUSE — \$25  NON-MEMBER'S SPOUSE — \$30

After Jan. 10 Higher Fees Apply  MEMBER'S SPOUSE — \$30  NON-MEMBER'S SPOUSE — \$35

SPOUSES' REGISTRATION INCLUDES: Hospitality Room Thursday & Friday morning; Ladies' Program Thursday afternoon; Continental Breakfast and Fashion Show Friday morning; Friday Luncheon; Shopping Tour Friday afternoon; President's Dinner-Dance Friday; Breakfast and Program Saturday.

### SPECIAL WORKSHOP-ONLY REGISTRATION (Includes 2 Workshops and Materials Thursday)

MEMBER - \$20.00  NON-MEMBER — \$25.00

### OPTIONAL FUNCTION TICKETS

BUFFET LUNCHEON — Thursday, January 23, 12:30 p.m. tickets \$6.00 each \$ \_\_\_\_\_

DINNER THEATER — Thursday, January 23, 7:00 p.m., including Dinner & Play  
("Send Me No Flowers"), tickets \$8.50 each \$ \_\_\_\_\_

TOTAL REGISTRATION FEES & OPTIONAL TICKETS \$ \_\_\_\_\_

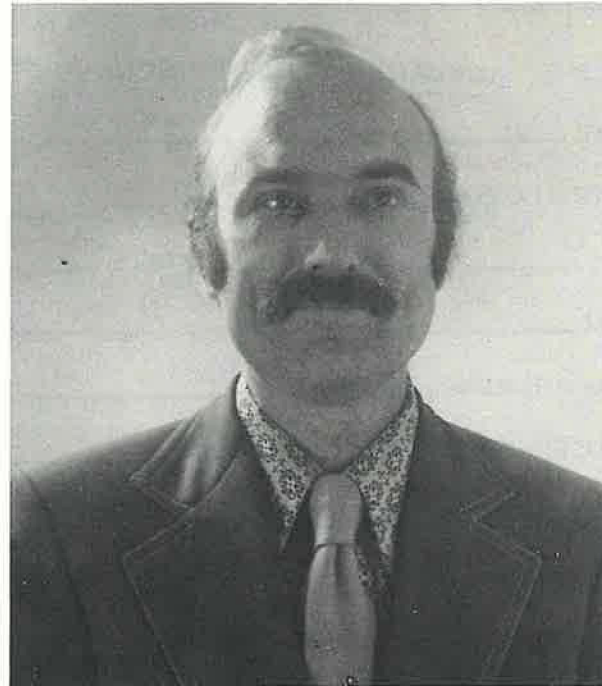
Return with check made payable to ISPLS  
111 N. Capitol Avenue  
Indianapolis, Indiana 46204

# Speakers At 1975 Annual Convention

The Indiana Society of Professional Land Surveyors is both pleased and honored that the following gentlemen have agreed to participate in the 1975 Annual Convention. Each speaker has accumulated a long list of credentials, and become prominent in his area of expertise. In order to familiarize you with these men, the following is brief biographical information.

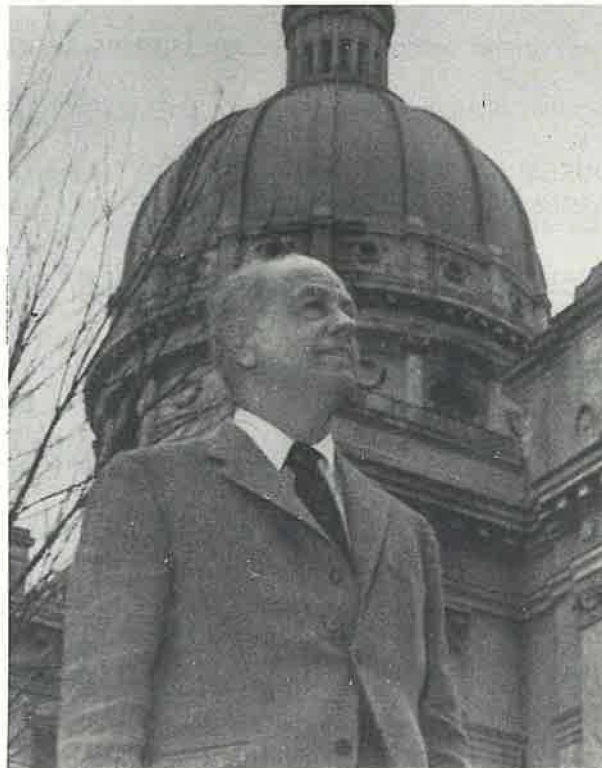
Dr. John A. Spooner, who will be conducting a workshop entitled "Stormwater Detention Storage — How to Avoid Building the Ark," received his Ph.D. degree in Civil Engineering in 1970 at the University of Wisconsin. Since then he has taught within the School of Civil Engineering at Purdue, and has been involved in the establishment of the Land Surveying Degree now offered.

In addition to his duties at Purdue, Dr. Spooner consults in the field of urban drainage, both with county drainage engineers and private land surveyors involved in sub-division design. Dr. Spooner is a member of American Society of Civil Engineers, National Society of Professional Engineers, American Geophysical Union, and is a registered engineer in Indiana.



Dr. John A. Spooner

The workshop, "Photogrammetry and the Land Surveyor", will be conducted by G. Warren Marks. Dr. Marks, who is an Associate Professor of Civil Engineering at Purdue University, received his B.S.C.E. and M.S. degrees from Cornell University and Ph.D. from the University of Illinois. From 1962-1965, he was employed as a physical scientist (photogrammetry) at the U.S. Air Force Rome Air Development Center, Griffiss A.F.B., New York. Also, Dr. Marks has authored or co-authored several papers relating to the application of photogrammetry to engineering problems. His professional affiliations besides ISPLS, include ASCE, ACSM and American Society of Photogrammetry of which he now serves as President of the Indiana-Illinois Chapter.



Rep. Richard Wathen

Richard B. Wathen, a member of the Indiana House of Representatives, will address the ISPLS Annual Convention on the topic "Indiana v. Kentucky — Where is the Boundary?" Rep. Wathen lives in Jeffersonville and is serving his second term. He presently is serving as chairman of the Boundary Commission, which was established to settle disagreements between Indiana and Kentucky regarding the state boundary line. Rep. Wathen is married and has three children. He received his undergraduate degree at Princeton University and his law degree from Indiana University Law School.

# Speakers at 1975 Annual Convention

Captain Leonard S. Baker, a native of Mississippi, is presently the Director of the National Geodetic Survey in Rockville, Maryland. He received a B.S. degree in civil engineering from Mississippi State University in 1943, and immediately entered the U.S. Marine Corps. Since assuming his position as Director of National Geodetic Survey in 1972, Captain Baker has been concentrating his efforts toward a closer alliance between the NGS program and the land surveyor throughout the United States. His numerous appearances have brought him in contact with local planners and surveyors of various communities concerned with increasing the accuracy of monumentation available and the utilization of existing monumentation by all the surveying profession. Captain Baker is currently Vice-President of ACSM, and a member of Society of Military Engineers, American Society of Photogrammetry, and the American Geophysical Union.



Captain Leonard S. Baker

David K. Blythe, who will be speaking on "Re-certification for Land Surveyors", is presently a Professor of Civil Engineering and Associate Dean for Continuing Education at the University of Kentucky. Mr. Blythe received both B.S. and C.E. degrees from the University of Kentucky, along with an M.C.E. in Photogrammetry and Traffic Engineering from Cornell University. He has authored numerous publications, participated in many continuing education programs, and done consulting work in addition to his University duties. His professional affiliations include ASCE, Kentucky Society of Professional Engineers, American Society for Engineering Education, and ACSM of which he serves as Chairman of Continuing Education Committee.

The workshop, "Radial Surveying", will be conducted by Roger Park and Carl Anderson. Roger Park is a resident of Indianapolis and is President of Park Engineering Co., Inc. He received his B.S.C.E. degree from Purdue University. Mr. Park is a member of ISPLS, Consulting Engineers of Indiana, National Society of Professional Engineers, American Society of Civil Engineers, ISPE, and Theta Tau.

Darrell R. Dean, Jr., who will conduct the "Tree and Wood Identification" workshop, is a licensed land surveyor in West Virginia where he is an Assistant Professor in land surveying and forest technology at Glenville State College, Glenville, W. Virginia. At present he is a graduate teaching assistant in surveying at Purdue University where he is pursuing graduate study in land surveying. He is a graduate of West Virginia University with a B.S. and M.S. in forestry. He is a member of ACSM, the Society of American Foresters, and the West Virginia Association of Land Surveyors. He has served as a member of the board of directors in WVALS. He is a student member of ISPLS and ASP.

Carl Anderson resides in Lebanon, where he owns and operates Anderson and Associates. He holds a degree in Engineering from Purdue University. Mr. Anderson is a member of ISPLS and also serves on the ISPLS Board of Directors, ACSM, and the Indiana Water Pollution Control Association.

John S. Grimes, who is a native of Elwood, Indiana, will be addressing the ISPLS Convention on "Property Law and the Land Surveyor — Some Aspects." Professor Grimes received his A.B. and J.D. degrees from Indiana University, and completed further graduate work at the University of Michigan School of Law. Since 1948, he has been a Professor of Law at the Indiana University, Indianapolis Law School. In addition, Professor Grimes was employed by the Federal Land Bank in Louisville, and was General Counsel to the Indiana Farm Bureau. A recognized expert in property law, Professor Grimes has authored numerous books on this subject, including the widely circulated volume, **Clark on Surveying and Boundaries**.

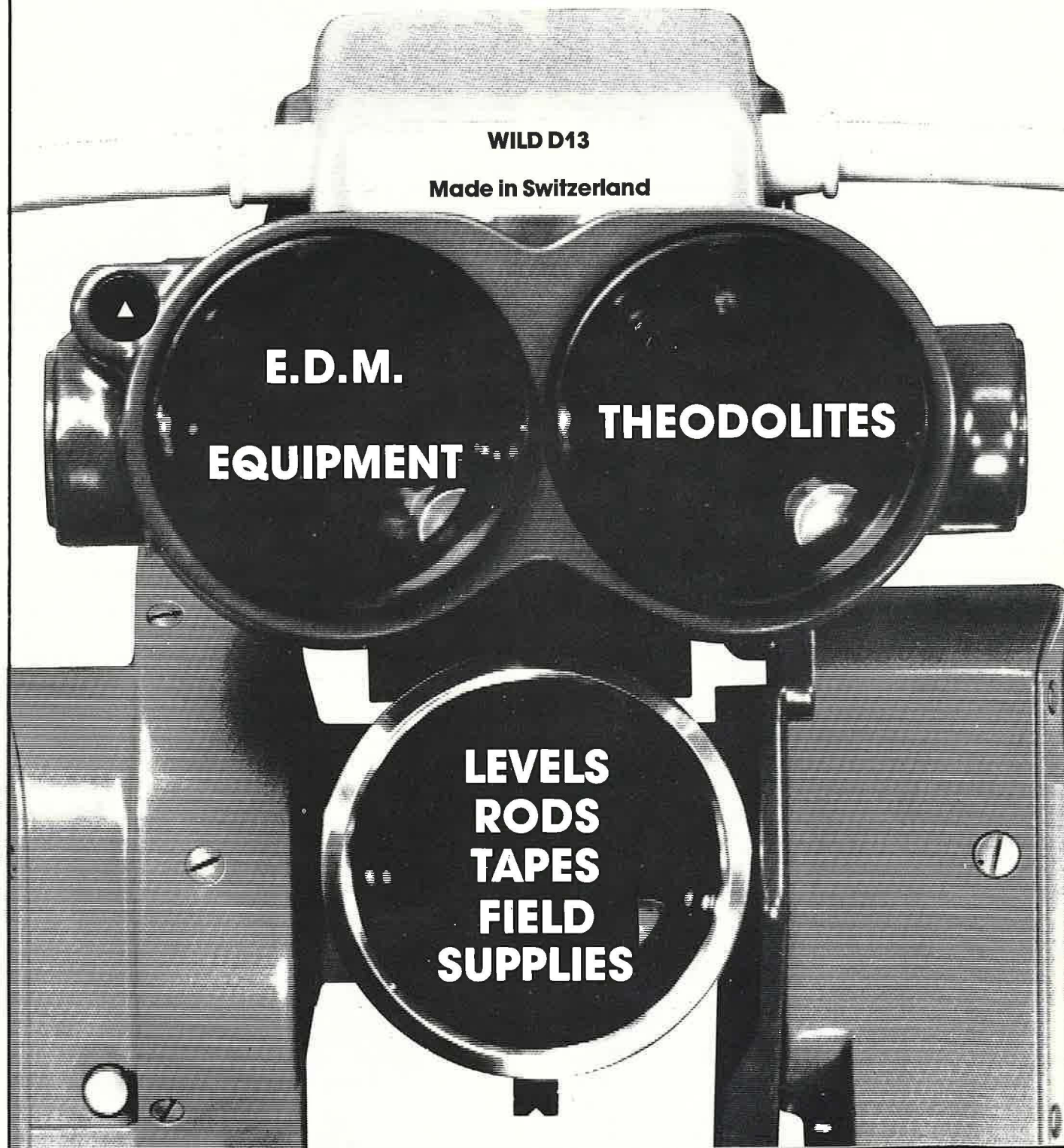
Donn Pepper will be speaking on the topic of "Happenings in Surveying at the National Level". A registered surveyor, Mr. Pepper is President of Donn E. Pepper and Associates, Incorporated, in Stillwater, Minnesota. He is a past Chairman of the Council of Sections and Affiliates (COSA) of ACSM, and is currently serving on the Board of Directors of the Land Surveys Division of the American Congress on Surveying and Mapping.



John S. Grimes

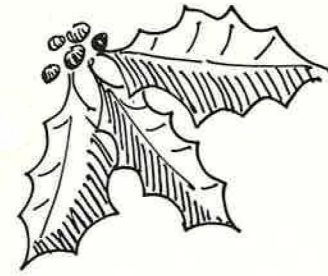
# HICKERSON INSTRUMENT CO., INC.

SURVEYING INSTRUMENTS - SALES AND SERVICE

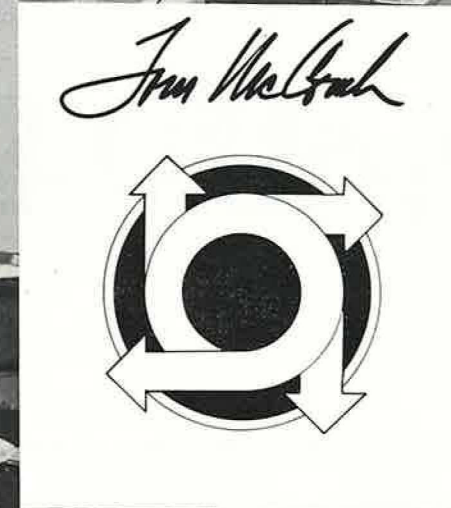
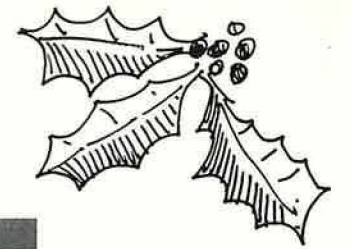


6009-11 E. 34TH STREET, INDIANAPOLIS, IND. 46226, PHONE (317) 547-7667

INSTRUMENTS • DRAFTING ROOM FURNITURE • BLUE LINE MACHINES & PAPER •  
E.D.M. EQUIPMENT • OFFICE FURNITURE • FIELD SUPPLIES



## Season's Greetings from your staff



*Laurie Welman*



*Bob Schenkel*



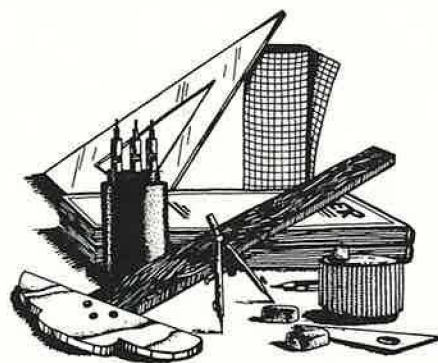
When you need  
drafting supplies and equipment,  
but don't have all day...

421 E. 3rd Street, Suite 8  
Bloomington, Ind. 47401  
Phone: 812-334-3990

2640 Eastbrook Plaza  
Columbus, Ind. 47210  
Phone: 812-372-0269

1300 E. 86th Street  
Indianapolis, Ind. 46240  
Phone: 317-844-7224

5975 E. 82nd Street  
Indianapolis, Ind. 46250  
Phone: 317 - 849 - 2842



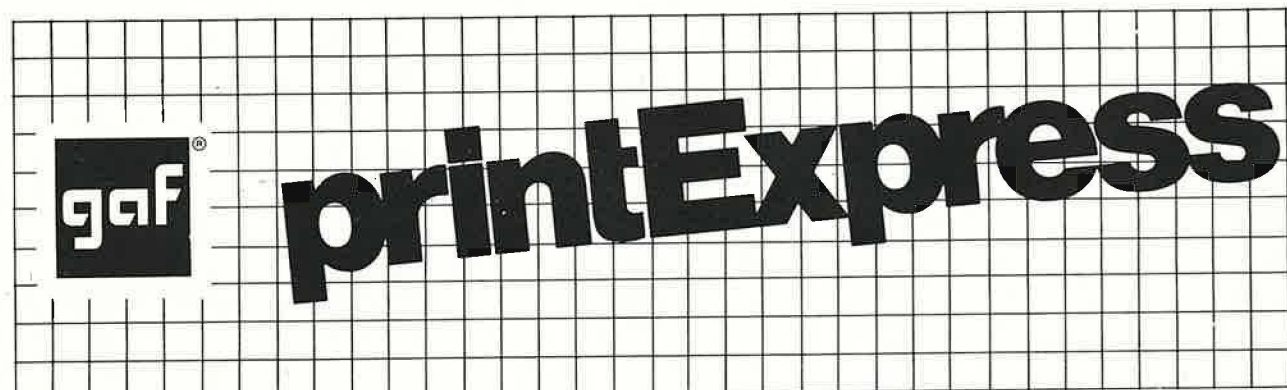
720 Northwestern Ave.  
W. Lafayette, Ind. 47906  
Opening - April '74

811 W. McGalliard Road  
Muncie, Ind. 47304  
Phone: 317-747-1064

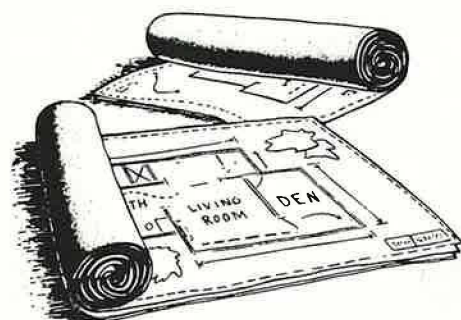
4501 E. Main Street  
Richmond, Ind. 47374  
Phone: 317-966-7691

515 Wabash Avenue  
Terre Haute, Ind. 47807  
Phone: 812-238-1629

... TAKE THE



PRINTING · XEROX COPIES · MICROFILM SERVICE · DRAFTING & ART SUPPLIES · PHOTO PRODUCTS

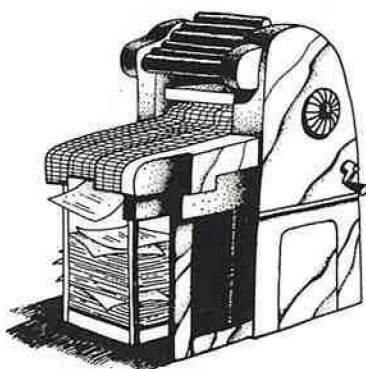


When you're looking  
for white printing, but are  
looking for it fast...



BUSINESS  
SYSTEMS  
CENTER

2260 Distributors Drive  
Fletcher Industrial Park  
Indianapolis, Indiana 46241  
317/241-2877



When you want  
something printed, but  
want it today...

## PUBLICATIONS AVAILABLE FROM ISPLS HEADQUARTERS

Quantity	Publication	Cost to Member	Cost To Non-member
_____	I.S.P.L.S. Manual of Practice (looseleaf in large three-ring binder)	\$15.25 *	\$22.50 *
_____	I.S.P.L.S. Surveying Publication Series Manual No. 1 - The Perpetuation of Corners in Indiana by John G. McEntyre (June 1972), 100 pages plus 5 page supplement.	\$ 5.25	\$ 7.50
_____	Manual No. 2 - The Indiana State Plane Coordinate System by Kenneth S. Curtis (June 1974), 196 pages.	\$ 5.25	\$ 7.50
_____	Papers from the 1974 Joint Conference of the I.R.L.S.A. and I.S.P.L.S. held in Champaign, Illinois, February 14-16, 1974, 175 pages.	\$ 5.25	\$ 7.50

Name \_\_\_\_\_

Street \_\_\_\_\_

City \_\_\_\_\_ State \_\_\_\_\_ Zip \_\_\_\_\_

Member ISPLS    yes \_\_\_\_ no \_\_\_\_

Total Amount Enclosed \$ \_\_\_\_\_

Mail To: ISPLS  
111 N. Capitol Ave.  
Indianapolis, Ind. 46204

(\*Price includes postage)

# WE NEED YOU. . . . YOU NEED US!

ISPLS encourages you to become a member! We now have a full-time staffed office which will enhance the image and growth of ISPLS, as well as carry out the defined goals.

We feel that you, as a member, will benefit in such areas as professional image, continuing education, governmental relations, etc. However, the most important part of ISPLS is the individual member who participates in the Society. Input from the local level is vital in defining and realizing our objectives.

Therefore, we urge you to complete the membership application and return it as soon as possible.



## 1974

### Membership Application

I am in agreement with the objectives of I.S.P.L.S., and hereby make application for membership as a Member , Junior , Associate , Student , (Check one.)

4th Quarter Dues are \$5.00.

Name \_\_\_\_\_ Position \_\_\_\_\_

Home Address \_\_\_\_\_ Employed by \_\_\_\_\_

City \_\_\_\_\_ Zip \_\_\_\_\_ Business Address \_\_\_\_\_

Telephone No. \_\_\_\_\_ City \_\_\_\_\_ Zip \_\_\_\_\_

Registration Status: (Give Reg. No. and Branch) (CHECK ONE)

R.L.S. \_\_\_\_\_ ACTIVELY PURSUING REG.(J) \_\_\_\_\_

R.P.E. \_\_\_\_\_ ONLY AFFILIATED WITH PROF. (A) \_\_\_\_\_

Member of American Congress on Surveying and Mapping \_\_\_\_\_ Yes \_\_\_\_\_ No

Application submitted to: Name \_\_\_\_\_ Sec. Trea. \_\_\_\_\_

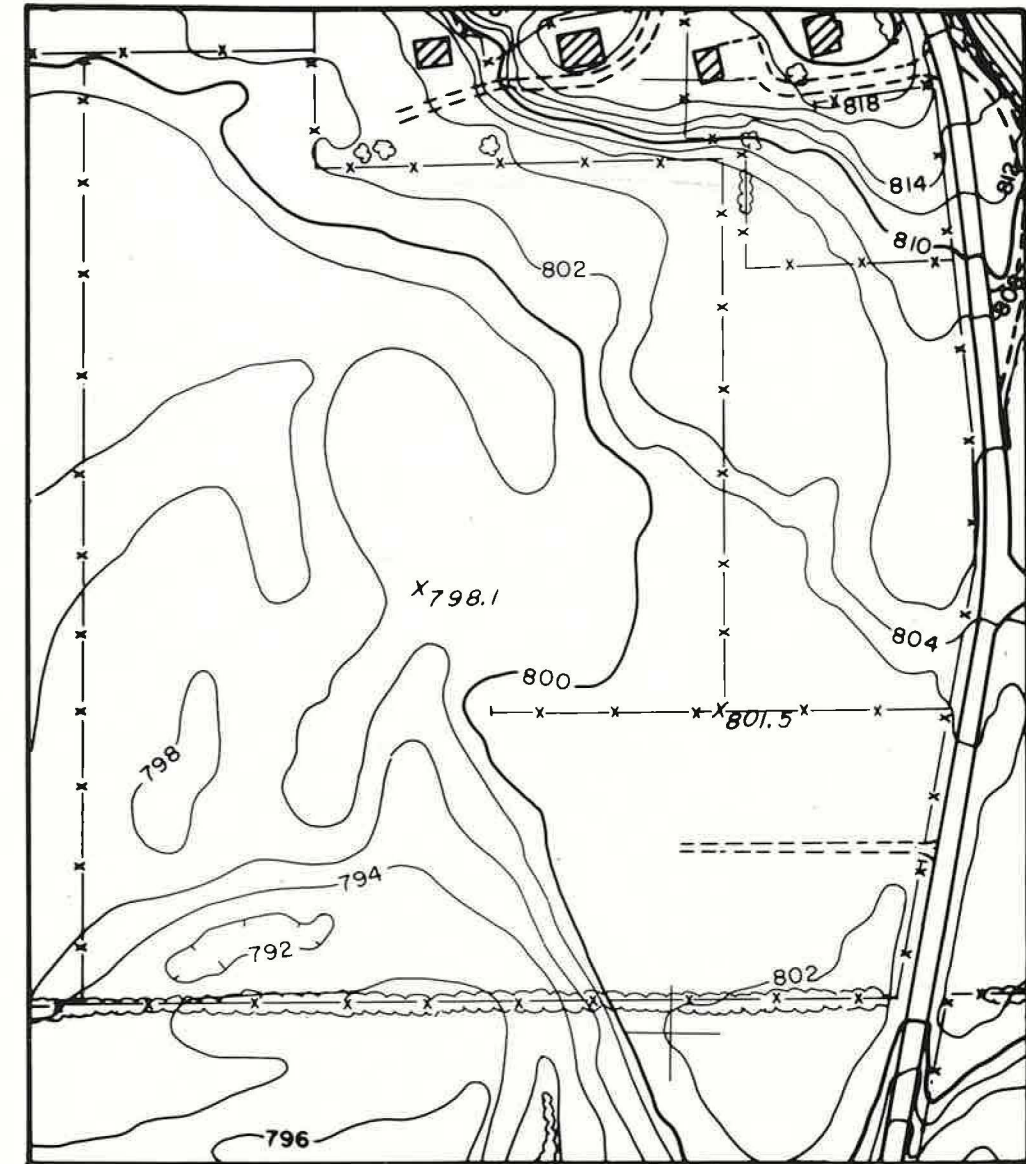
Address \_\_\_\_\_

Secretary-Treasurer

Application received \_\_\_\_\_ Current dues paid \_\_\_\_\_

Board of Directors

Application Approved \_\_\_\_\_



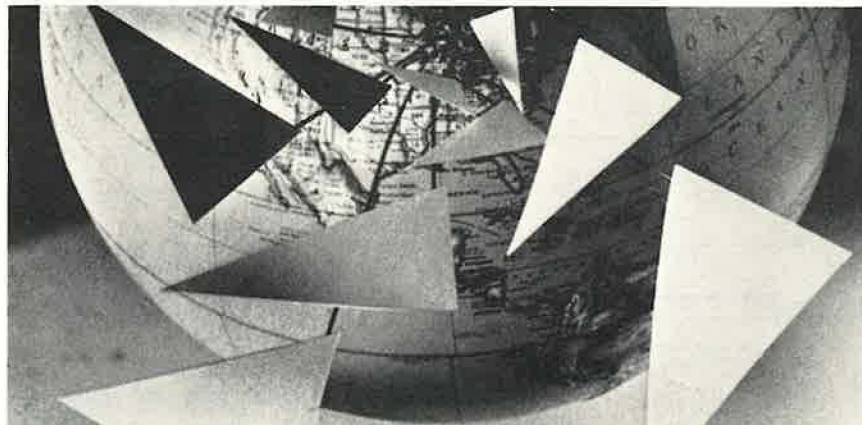
das

DICKERSON AERIAL SURVEYS

2505 CAMBRIDGE ROAD, LAFAYETTE, IN 47905 317-474-9279

**THE HOOSIER SURVEYOR**  
Indiana Society of Professional Land Surveyors, Inc.  
111 N. Capitol Avenue  
Indianapolis, Ind. 46204

Bulk Rate  
U. S. Postage  
**PAID**  
Indianapolis, Ind.  
Permit No. 4056



## **You Pick The Spot.**

**Sidwell's engineering mapping service can give you detailed information on any spot you pick.**

**How? By using the latest precision mapping equipment and field-proven techniques. Result? Mapping tailored to your exact requirements, delivered when you need it . . . and at a price you can afford. Hard to believe? Not really.**

**Sidwell's highly trained professionals have been doing it for over 45 years.**



**THE SIDWELL COMPANY**

SIDWELL PARK, 28W240 NORTH AVENUE  
WEST CHICAGO, ILLINOIS 60185 (312) 231-0206

*Serving the needs of industry and government for over 45 years.*

**Call today or write Dept. 15pl6 for our new brochure explaining our complete service.**