

SURVEYOR

HOODSIEER



**Indiana Society of
Professional Land Surveyors**



- **Bowen Speaks at I.S.P.L.S. Annual Meeting**
- **Recognition Dinner for Purdue ACSM Student Chapter**
- **Successful Joint Conference Held in Illinois**



New HP Distance Meter... New Value, \$3,495*

The HP 3805, a new Distance Meter from Hewlett-Packard, gives you a leg up in capability... a station back in price. From its safety yellow case to its built-in computer, the HP 3805 is everything you told us an electronic distance meter should be. Check it out: On features. On price. On performance. We think you'll agree, it's a remarkable instrument. And the new low price of \$3,495* makes it an incredible bargain.

Automatic Readout cuts measurement time to six seconds. Zero in on your target, then read your distance on the digital display. That's all there is to it. At the flip of a switch, you can observe the distance in feet (up to one mile) or metres (1.6 km.). The secret to this quick response and simple operation is a computer. Built right into the HP 3805, it not only handles the measuring job for you—but continually monitors the meter's performance to assure measurement confidence, always. A computer. To make your job easier, faster, more accurate.

On the lighter side, the HP 3805 will open a whole new dimension in speed mobility, and endurance

For new standards in Surveying Solutions, think Hewlett-Packard



Sales and service from 172 offices in 65 countries.
P.O. Box 301, Loveland, Colorado 80537

for you and your crew. Thanks to modern electronic circuits, the complete HP 3805 weighs but 19 pounds on the tripod—including the optional Battery Pod. (This lightweight pod snaps into the belly of your HP 3805 to give you a cable-free power source.) But the best news for you back-country scramblers is our standard field-packable soft case that adds only 5 pounds.

The HP 3805 is available now. For full information or a hands-on demonstration, call your local HP Sales Office or send us the coupon. Ask about HP's full line of surveying calculators, too. From the little giant pocket calculators to powerful programmable models, there's a quick solution for every surveying problem.

HP Civil Engineering Division
P.O. Box 301, Loveland, Colorado 80537

IN

- ☐ I would like to order a new HP 3805 Distance Meter. Contact me immediately.
- ☐ I would like a demonstration of HP Surveying Products:
- ☐ Distance Meters ☐ HP Programmable Calculators
- ☐ Please send me more information on Hewlett-Packard Surveying Products.

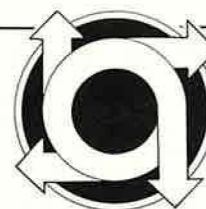
Name _____

Title _____ Phone _____

Company _____

City _____

State _____ Zip _____



OFFICERS FOR THE YEAR 1974

President
John G. McEntyre
160 Pathway Lane
West Lafayette, Ind. 47906
Tel: 463-7468

President-Elect
William S. Tanke
R.R. 4, Tower Road
Valparaiso, Ind. 46383

Vice President
Brian M. Dickerson
2505 Cambridge Road
Lafayette, Ind. 47905

Secretary-Treasurer
Zohab Tazian
11224 Kings Crossing
Fort Wayne, Ind. 46805

Directors
Wesley Day
144 Whiteland Road
Whiteland, Ind. 46184

Charles Campbell
9841 E. 21st St.
Indianapolis, Ind. 46229

Rex Bowman
3514 E. Indianbrook Dr.
Lafayette, Ind. 47906

Carl Anderson
620 E. Fordice St.
Lebanon, Ind. 46052

Gene Darnall
707 Clifty Drive
Columbus, Ind. 47201

James Dankert
5920 N. Tuxedo St.
Indianapolis, Ind. 46220

Newsletter Editor
Kenneth S. Curtis
School of Civil Engineering
Purdue University
West Lafayette, Ind. 47906
Tel: 494-5684

Residence:
2204 Happy Hollow Road
West Lafayette, Ind. 47906
Tel: 463-7452

Office:
School of Civil Engineering
Purdue University
West Lafayette, Ind. 47906
Tel: 494-1480

Executive Secretary
Thomas V. McComb
111 North Capitol Ave.
Indianapolis, Ind. 46204
Tel: 634-6206

HOOSIER SURVEYOR

VOLUME 1 NO. 1 SEPTEMBER 1974

Committee Assignments

Following are the Committee assignments for 1974. Those assigned were recommended for committee membership. ISPLS needs you in the assignment shown. We are depending on you to serve for the year 1974 in the capacity shown. You will receive a formal letter of appointment in the near future in which duties will be listed.

Local Chapters and Functional Sections

John V. Schneider (Chairman)
John E. Beals
H. R. Blankenbaker
William S. Pang
Dorman Miller
Gene W. Darnall
William S. Tanke
Larry E. Vanosdol
Walter J. David
A. D. Ruth

Budget and Finance

Zohrab K. Tazian (Chairman)
Brian M. Dickerson
William S. Tanke

Constitution and By-Laws

Andrew J. Sobiech (Chairman)
Lawrence W. Trueblood
James K. Vinton, Jr.

Education Committee

Roger Woodfill (Chairman)
Charles A. Budnick
John E. Fisher
Lloyd H. Kemmer

Ethics

Wesley L. Day (Chairman)
James E. Dankert
Bradford R. DeReamer
Glenn D. Warner

Fees and Salaries

Vincent J. Schneider (Chairman)
Gene W. Darnall
Richard Stoeppelwoerth

Interprofessional Liaison

William S. Tanke (Chairman)
John E. Beals
Charles C. Campbell

Legislative

Nelson L. Prall (Chairman)
Wesley L. Day
Orwic A. Johnson
David L. South

Membership

Daniel J. Haskett (Chairman)
Richard Beaman
Dennis L. Grumpp

Perpetuation Program

Carl M. Anderson (Chairman)
William H. Land
Steve W. Manich
John G. McEntyre

Program

William S. Tanke, (Chairman)
Lloyd H. Kemmer
All members of the ISPLS Board
Ken Curtis

Publications

K. S. Curtis (Chairman)
Rex M. Bowman

Registration

Richard J. Beck (Chairman)
David South
Richard Taylor

Survey Standards

Edgar T. Fleener (Chairman)
Warren Marks
Alan Stanley

Public Relations

Neil Franklin (Chairman)
Robert Bigelow
K. S. Curtis
Christopher R. Lewis

Survey Manual

Warren Marks (Chairman)
John G. McEntyre

Tape Standardization

Ralph K. Bigman (Chairman)
Robert B. Kelker

Distinguished Service Award

The Hoosier Surveyor is published quarterly by the Indiana Society of Professional Land Surveyors, to inform land surveyors and related professions, government officials, educational institutions, libraries, contractors, suppliers, and associated businesses and industries about land surveying affairs.

Editorial / Advertising offices: 111 North Capitol Ave., Indianapolis, IN 46204 (Telephone: 317 634-6206). Advertising rates, closing dates, circulation data on request. Contributed articles, photographs subject to space limitations.

Kenneth S. Curtis
Editor

Greg Schenkel
Assoc. Editor

PRESIDENT'S COMMENTS



ISPLS has engaged a management firm and the 1973 President of our Society has been convicted of a felony for not submitting the lobbying expense account of the Society by the date specified by state statute. These are events which have happened since our last Newsletter and should be matters of considerable concern to our members.

The leaders of the Society in recent years have felt that we are not serving the individual members of the Society effectively. They have felt that the individual members should have more effective input and should receive more communication from the state level. There is no doubt that the establishment of strong local chapters is the most effective solution to this input and output communication problem. The Society has advanced to its present level primarily because of the continued efforts of several dedicated individuals. We find ourselves now "treading water." The so-called routine items are done somewhat effectively but relatively little progress is made toward our long-range goals. We have come to that point in time where we can no longer operate

effectively on a part-time, volunteer basis. Your Board of Directors has engaged the services of a full-time professional association management firm, subject to appropriate conditions. This firm, McComb & Associates, Inc., brings to ISPLS a competent professional staff that will represent the Society in all important areas. Every member of the Society should have received a letter recently discussing this decision to engage management help. Thomas V. McComb has been named our Executive-Secretary.

This firm will (1) Give extensive aid to local chapters formation and/or strengthening, (2) Improve the ISPLS image (3) Improve communication, (4) Direct an effective legislative program, (5) Improve workshops, (6) Give efficient management services, (7) Guide publicity programming, and (8) Plan annual meetings.

I feel that this is a real stride forward for ISPLS. The individual members and the Society will grow professionally and be more effective in their efforts with this new arrangement. Your comments are solicited by the Board and by McComb & Associates. Help us in two ways: (1) Seek new members for the Society and (2) Pledge financial assistance to this venture as requested in my letter of June 7, 1974. The official address of ISPLS is now: 111 N. Capitol Avenue, Indianapolis, Indiana 46204. (Phone 317-634-6206).

ISPLS was registered to lobby at the 1973-74 Session of the General Assembly. Wesley L. Day, our President for 1973, signed the form which registered us as a lobbying organization. State statute requires that each organization registered in lobby file and expense account within thirty days after the Assembly adjourns. Violation of the statute is considered a felony and specifies a minimum penalty of \$200 and/or one year imprisonment.

Four organizations were late in

filing their expense accounts. These organizations were the Purdue Student Government, AMOS (a church group formed to help migrant workers), the Home Economics Society, and ISPLS. The Attorney General of Indiana, Theodore L. Sendak, recognizing the evil and malicious goals of such organizations, chose to file charges against the officers of all four of these organizations. The officers of ISPLS for 1973, Wesley L. Day (President), Jerry L. Setser (Vice-President) and Brian M. Dickerson (Secretary-Treasurer) were the officers named in the charges against ISPLS. His office would not negotiate or discuss the cases and insisted on a court trial.

The trial was held Monday, July 1, 1974 in Criminal Court No. 2 in Indianapolis. Jerry Setser and Brian Dickerson were acquitted. Wesley Day was found guilty. The judge waived the fine and waived court expenses, thus in my opinion, showing his non-legal feelings about the charges. ISPLS hired the attorney to defend our officers. The Board will now investigate the feasibility of an appeal and will make a decision concerning this possible action.

Your President regards the decision to take this action by the Office of the Attorney-General as unwise and unjust. The purpose of such a statute is not to place a felony on the record of an unselfish individual who devotes his own time to seek legislation for the protection of the public welfare. The religious group, the Home Economics Society, the student group, and ISPLS certainly have completely unselfish motives in their legislative endeavors and it is tragic that any of their members gets a felony on his record for efforts related to this endeavor.

Members of the Society are requested to remember, when appropriate, this action by Theodore L. Sendak, the Attorney-General of Indiana.

RETIRED SURVEYOR HAS LEVEL FOR SALE

Guy Pacey, 407 West Stadium Ave., West Lafayette, Indiana (317-434-4466) has an approximately 25 year-old Gurley dumpy level and rod which he wishes to sell. If interested, please contact him directly.

NEW ISPLS STAFF



On June 1, 1974 your Board of Directors engaged the professional management services of McComb & Associates, Inc. of Indianapolis. Mr. Thomas V. McComb will serve as Executive Secretary of ISPLS and Mr. Greg Schenkel has been designated Associate Executive Secretary. Our headquarters office is located at 111 N. Capitol Avenue, directly across from the State House.

Tom McComb is a native Hoosier and originally hails from Fort Wayne. He is a graduate of Indiana University holding a Bachelor of Science degree in Business and the Indiana University School of Law where he received his J.D. Degree. He has been a member of the Indiana General Assembly serving in both the House and Senate. The recipient of many awards, McComb was named Outstanding Young Man of Fort Wayne in 1963 and is listed in Outstanding Young Men of America.

A native of Huntington, Greg Schenkel is a graduate of Ball State University and for the past three years has served as Assistant Corporation Director for the Secretary of State. He has had extensive experience in the areas of administration and marketing and will provide ISPLS with additional leadership.

ISPLS welcomes McComb & Associates, Inc. and looks forward to many additional accomplishments under this new management concept for our society.

John G. McEntyre
President

FALL WORKSHOP PLANNED

A fall workshop, jointly sponsored by ISPLS and the Indiana-Illinois Chapter of the American Society of Photogrammetry, will be held in Lafayette, Indiana on Wednesday afternoon, November 6. The scheduled topic of discussion will be the "Application of Photographic and Photogrammetric Products in Survey and Engineering Practice"; and will be conducted by Charles Danner (Danner and Associates, Urbana, Illinois) and Dr. Donald Graff (President of Engineering Computer Services, LTD. Hoffman Estates, Illinois).

The afternoon session will be followed by a dinner and program. Further details will be forthcoming.

Workshops

FORTY-TWO ATTEND SPRING WORKSHOP ON GRAPHICS

On Saturday, April 13, 1974, forty-two land surveyors attended a one-day workshop on "Modern Graphic Techniques" involving the state-of-the-art in black and white and/or color reproduction including inking and scribing. Keuffel and Esser Company furnished their specialists in graphics, mapping, and reproduction fields — John Tysdal, Joe Ross, and Dave Horsnall — who essentially conducted the workshop.

CONTINUING EDUCATION WORKSHOPS

Land Surveyors; in cooperation with the School of Civil Engineering of Purdue University, recently completed a successful series of workshops.

Held in ten cities throughout the state, these continuing education workshops attracted over 200 people. Professors Kenneth S. Curtis and John G. McEntyre, of Purdue University, conducted the day-long sessions, with Professor Curtis speaking on the "Indiana State Plane Coordinate System", and Dr. McEntyre addressing the afternoon session on "Retracement and Perpetuation of Corners in Indiana".

New Local Chapter Formed

A request for the formation of a new local chapter of I.S.P.L.S. was presented and accepted at the Board of Directors meeting July 13, 1974.

This Chapter, consisting of 25 charter members, includes Lake, Porter, LaPorte, Starke, Newton, Pulaski and Jasper Counties; and

will be known as the Northwest Chapter of the Indiana Society of Professional Land Surveyors.

Anybody in this area interested in becoming a member of the Northwest Chapter should contact Bill Tanke, R.R. 4, Valparaiso, Indiana 46383.

SUSTAINING MEMBERS

The following are sustaining members of the Indiana Society of Professional Land Surveyors. The Society appreciates their continued participation and encourages your support of these firms.

PIONEER NATIONAL
TITLE INSURANCE CO.

ACCU-AIR SURVEYS, INC.

AIR MAPS, INC.

HEWLETT-PACKARD CO.

TECHNICAL ADVISORS, INC.

SCHONSTEDT INSTRUMENT CO.

HICKERSON INSTRUMENT CO., INC.

DICKERSON AERIAL SURVEYS

NATIONAL SURVEYING INSTRUMENTS, INC.

EXAMINATIONS

In the past few years there have been a number of changes in the examinations for Professional Engineering Registration. The Indiana State Board is now using the full National Uniform Examinations for Professional Engineers.

The Fundamentals examination consists of eight hours, a morning section and an afternoon section, both of which are multiple choice questions and machine graded, and cover the following topics: mathematics, neucleonics and wave phenomena, chemistry, statics, dynamics, mechanics of materials, fluid mechanics, thermodynamics, electrical theory, material science, and economic analysis. In both sections, the applicant is given a choice of the questions which he may desire to answer.

The Principles and Practice examination consists of an eight hour examination consisting of a morning and afternoon section. In both sections there are questions in the following disciplines: chemical, civil, electrical, mechanical, manufacturing, ceramic, industrial, petroleum, agricultural, nuclear, sanitary and structural. In both of these sections also, the applicant is given a choice of the questions which he may desire to answer.

The Board also makes special arrangements for men to take the examination, for example, the Board has made special arrangements for men to take the examination who because of religious

convictions did not wish to take the examination on Saturday. We have arranged other dates for them to take the examination. Also, at the last examination, special arrangements were made for a blind applicant to take the EIT examination. These examinations are not available in braille, so it is necessary to make special arrangements to have a person read the examination and mark the multiple choice questions in the proper locations so that they could be scored.

Also, at the last examination, special arrangements were made for the examination to be held in the Delco-Remy Plant in Anderson. Thirty-eight men from the plant took the examination on Friday and fifty-five took the examination on Saturday. This is the first time in the history of the Board that the examination has been held in a plant for employees of that plant.

Field Representative

Mr. Robert W. Lind, Lebanon, Indiana has accepted the position of Field Representative for the Indiana State Board of Registration for Professional Engineers and Land Surveyors as of April 1, 1974.

Mr. Lind is a native of Vincennes, Indiana and obtained a Bachelor of Science and Civil Engineering degree from Purdue University in 1933. He is registered as both a Professional Engineer and a Land Surveyor.

Mr. Lind has been the County Surveyor of Knox County, Indiana, the City Engineer of Vincennes, Indiana, has worked with Consulting Engineers and also for the U.S. Civil Service Commission, and operated as manager and part owner of the Lebanon Concrete Products, Inc. of Lebanon, Indiana. Since May, 1957, Mr. Lind has been an employee of the Indiana State Highway Commission, Division of Land Acquisition.

As Field Representative, Mr. Lind's primary responsibilities will be investigation of complaints both against Professional Engineers and Land Surveyors.

Boyd Phelps President of CEI

Boyd W. Phelps, P.E., Michigan City, was recently elected President of Consulting Engineers of Indiana, Inc. He succeeds James O. Freese, P.E., Franklin, who was elevated to Board Chairman.

Other officers include Melvin D. Wessler, P.E., (Indianapolis), president-elect; Kenneth L. DeLap, P.E., (Columbus), vice-president; Joseph S. Fragomeni, P.E., (South Bend), secretary-treasurer; and Thomas V. McComb, (Indianapolis), executive vice-president.

Serving, with Freese, on the board are Charles G. Fuller, P.E.; William F. Quebe, P.E.; Robert E. Guion, P.E.; and Charles L. Thompson, P.E., all of Indianapolis; Achille D. Biagi, P.E., of Evansville; and Philip L. Schnelker, P.E., of Fort Wayne.

CEI headquarters is located at 111 North Capitol Avenue, Indianapolis, Indiana 46204.

"CAPITAL COMMENTS"

Inasmuch as this is our first direct communication with most of you, I wish to take this opportunity to express my pleasure in being selected by the Board of Directors as your Executive Secretary. In the months ahead we, along with your officers and directors, will strive to make ISPLS a truly representative and active voice for the profession. Through this column we shall attempt to keep you informed of happenings within the profession, business, industry and government.

Our first task is in the area of new member recruitment. Although we shall have an all-out campaign beginning in October, the best way to recruit is for each member to get a member. Every licensed surveyor in Indiana should be a member of ISPLS, as only through affiliation and cooperation can goals—both long and short terms—be accomplished. We've got a big job to do and we must get on with it. So, why not utilize the membership application on the back inside page and secure that new member. If everyone would do just that, ISPLS would have in excess of 900 members by the first of the year.

Secondly, for local chapters — your ISPLS staff is available for your meetings. We'll be glad to present a program or to assist you in Chapter development. In addition, we plan to establish new local Chapters, as they will strengthen the entire Society.

Finally, as an ISPLS member, if you need any assistance, don't hesitate to contact your State Office. We stand ready to help.

Thomas V. McComb, Executive Secretary



ACSM DELEGATE'S REPORT • 74 Annual Meeting

This year the spring meeting of ACSM was in St. Louis, rather than Washington (more about that, later), and it was excellent. Everyone who had a part in the planning or operations, including the staff of the Chase-Park Plaza Hotel, should be congratulated. I had a good time, as did my chauffeur and favorite room-mate, and I thank you all for the opportunity to attend as your delegate.

Bob Reckert is the new president of ACSM, and Ellsworth Stanley is the new chairman of the Land Surveyors Division. President Reckert, in his address, announced the following points as his goals for ACSM during the coming year:

1. Sponsor adoption of graduation from an approved four-year surveying curriculum as a minimum requirement for registration. Hopefully, all registration boards would comply with this requirement by 1979.
2. Develop an acceptable accreditation procedure for presently available and proposes land surveying curricula.
3. Continue to press for land surveyor representation on all state registration boards.
4. Increase from twenty to thirty the number of states using the uniform land surveyor examination.
5. Adopt guidelines for the certification of survey technicians.
6. Expand the number and scope of ACSM - sponsored workshops.
7. Encourage all sections and affiliates to facilitate meaningful continuing education opportunities.

Even if you might not completely agree with every point, you have to admire the thought and vision that are represented in a program of that scope.

Two items of outstanding importance were brought up during committee meetings. The Education Committee presented their fourth draft of a proposal for re-registration of land surveyors. Basically, their proposal would require every registered surveyor to acquire a stipulated number of credits — through professional activity, professional society membership, continuing education, technical committee work, etc. — every three years, in order to maintain his license. The alternative to acquiring these credits would be re-examination. This sounds pretty radical, in terms of the current style, but we must all recognize the accelerating pace of technological advances in our profession, and there is a fine line between the obsolete practitioner and the incompetent practitioner. The committee plans to conduct a trial run in Kentucky, testing how surveyors react to the program and to the current design for allocation of credits. I offered the members of ISPLS (color me generous) to be used either as a control group or part of their test, and I hope we will hear from them later this year.

The second item affects the organizational structure of ACSM. Presently, all local societies (such as ISPLS) relate to ACSM through the Council of Sections and Affiliates, which is a committee of the Land Surveyors Division, which in turn is

one of the three divisions of ACSM. Understandably, there has been some grumbling that this structure inhibits ACSM responsiveness to the concerns of the land surveyor, most of which are represented through their membership in a local section or affiliate state society. Regionalization has been proposed as a remedy, and a task force has been established to study this concept. Under the proposal presently being considered, Indiana would be in the Great Lakes Region, along with Iowa, Illinois, Ohio, Wisconsin, Michigan and Minnesota. Each local society would appoint two delegates to the region, and each region would send two representatives to meet with the ACSM Board of Directors. The intention is not to supplant the local societies, but rather to provide them with a more direct input/output channel to the ACSM Board.

How many of you think FIG is something only a weirdo eats for breakfast? It also stands for Federation Internationale des Geometres (International Federation of Surveyors, dummy), and this group will be hosted by ACSM September 7-16, in Washington. This will be the first international meeting on surveying and mapping in the United States since 1952, and the first FIG congress ever in the United States. The program looks good, technically and socially, and it behooves as many of us as possible to shave, put on a clean shirt, and go and uphold the image of surveyors in our country.

Neil Franklin
ISPLS Delegate to ACSM

NOTES FROM ACSM

The Land Surveys Division of ACSM is anxious to obtain first-hand information on the experiences which land surveyors have had with OSHA cases. If members of your organization have had inspections and have been cited, it would be helpful to have information concerning the experience. Such information should be addressed directly to the OSHA Committee Chairman, William I. Shafer, 8633 W. 90th Terrace, Overland Park, Kansas 66212.

Upon recommendation of the Board of the Land Surveys Division the Board of ACSM approved a definite policy concerning advertising at its March 1974 meeting. The policy is as follows:

"Advertising shall be limited to lower case listing in white and yellow pages of the phone directory. Display advertising of any type is prohibited.

"Brochures outlining qualifications shall be factual and may be supported by a listing of actual projects which have been completed."

The new Manual "Manual of Instruction for the Survey of Public Lands 1973" is now available. Orders from the U.S. Printing Office are incurring long delays in delivery. As a service to those interested in the publication, ACSM will mail post paid copies on the day of receipt of requests which are accompanied by checks or money orders for the proper amount. The charge is the same as that of GPO, \$7.55. Address orders to American Congress on Surveying and Mapping; 430 Woodward Building; 733 15th St., N.W.; Washington, D.C. 20005.

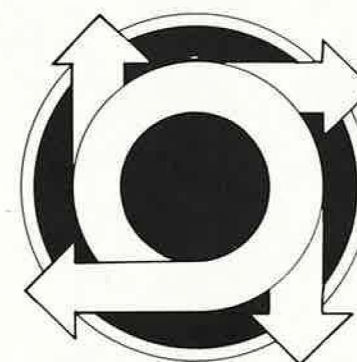


I.S.P.L.S. ANNUAL MEETING

Circle your calendar and plan to attend this year's I.S.P.L.S. Annual Meeting to be held January 23, 24 and 25, 1975. This Meeting, to be hosted by the Central Indiana Chapter, will be held in Indianapolis, and will offer many worthwhile and enjoyable events. Dr. Otis R. Bowen, Governor of Indiana, will be a principal speaker, and other programs will be announced later.

Wives are encouraged to attend, as programs of interest to the women will be provided.

All details, along with a reservation form, will be forthcoming in the December issue of "The Hoosier Surveyor", so plan now to attend!



PURDUE ACSM STUDENT CHAPTER RECOGNITION DINNER

The Purdue Student Chapter of the American Congress on Surveying and Mapping held its second Annual Recognition Dinner Thursday night, April 25, 1974 at Morris Bryant Inn in West Lafayette, Indiana. The dinner honored eleven students who received their Bachelor of Science in Land Surveying and two who received a Bachelor of Science in Interdisciplinary Engineering with majors in the surveying area in the academic year 1973-74, and Richard F. Lewis of Lucerne who was awarded the second annual \$500 scholarship sponsored by the Indiana Society of Professional Land Surveyors. Sixty-five students, staff, and guests attended the banquet.

Purdue University granted its first Bachelor of Science degree in Land Surveying in May, 1973. Fourteen students have now been awarded this degree by Purdue University.

The Indiana Society of Professional Land Surveyors awarded its second annual scholarship. This scholarship is in the amount of \$500 and is awarded to a junior student. John G. McEntyre, President of the Society and Roger Woodfill, Chairman of the Education Committee, represented the Society with Woodfill presenting the award. John K. Schlegelmilch was presented the annual award as the outstanding graduate of the Land Surveying Class for the academic year 1973-74. This award is sponsored by the surveying staff and consists of one year's dues to the American Congress on Surveying and Mapping. Kenneth S. Curtis, Professor of Surveying and Mapping, presented the award. Mark S. Todd and Samuel E. Wolfe were also recognized as outstanding students and were awarded one year's membership to the Congress; these memberships are granted by the Congress.

Douglas O. Dowling, Chairman of the Student Chapter,

introduced each of the graduates. He also presented the Ph.T. (Pushing Hubby Through) award to the wives of the married graduates.

Dr. John F. McLaughlin, Head of the School of Civil Engineering, Purdue University, spoke to the group briefly. He commended them for their esprit de corps and congratulated them upon their successful completion of their degree.

Samuel E. Wolfe, Student Chapter Vice-Chairman, presided over the meeting. The speaker was Russell L. Voisin, Vice-President of Rand McNally and a past president of the American Congress on Surveying and Mapping. The topic of his talk was "Oddities in Geographic Names". His talk was most informative and included an entertaining video-tape presentation of his appearance on the Johnny Carson Show concerning the same topic.

The officers elected for the Student Chapter for the 1974-75 academic year were announced. They are: Chairman, Wesley G. Crawford (Bedford, Pa.); Vice-Chairman, Douglas O. Dowling (St. James, N.Y.); Secretary, Nicholas A. Piccini, Jr. (Archbald, Pa.); Treasurer, Kevin B. Potter (Ridgeville); and Student Representatives, Lee Bender (Lafayette, Gregory W. Asher (Attica) and Eugene P. Olinger (Ferdinand). The Faculty Advisor is Professor John G. McEntyre.

There presently are approximately 65 students on the Lafayette campus with a declared objective of a Bachelor of Science in Land Surveying. Approximately twelve students are expected to receive their degrees in May, 1975, one or two may complete their degrees in January, 1975. Any potential employers of these graduates are encouraged to contact Professor McEntyre or the Purdue Placement Office at the first opportunity.



PURDUE UNIVERSITY MAY 1974 GRADUATES include 1st row, left to right: Michael Troup (Plymouth); Steve Wood (Zionsville); Eric Cenovich (Papillon, Nebra.); Samuel Wolfe (LaPorte); 2nd row: John Schlegelmilch (Monticello); Steve Mundy (Minneapolis, Minn.); Kurt Maynard (Clayton); 3rd row: Klaus Roman (Gary); John Gaydos (Highland). Absent from the picture were: Brent Smith (Cambridge City); Mark Todd (Altura, Minn.); Ronald Weis (West Bend, Wisc.); and Dan Conklin (Osceola, Ark.). Mundy and Roman were in the Interdisciplinary Engineering program with majors in Geodetic and Photogrammetree Engineering and all the others obtained a Bachelor of Science in Land Surveying.



SECOND ANNUAL \$500 ISPLS SCHOLARSHIP awarded to Richard F. Lewis, (left), Lucerne, Indiana, by the chairman of the ISPLS Education Committee, Roger Woodfill, Lawrenceburg, Indiana.



1974 - 75 STUDENT CHAPTER OFFICERS, left to right are: Potter, Piccini, Crawford, Dowling, Olinger, Asher, and Bender.



PAST ACSM NATIONAL PRESIDENT [1971] SPEAKS at the 2nd Annual ACSM Purdue Student Chapter Recognition Dinner. Russell L. Voisin, left, of Rand McNally and Co., spoke on "Oddities in Geographic Names". Vice-Chairman Samuel Wolfe introduced him.



PUSH HUBBY THROUGH [PHT] AWARD was presented to several wives by ACSM Purdue Student Chapter chairman, Douglas Dowling. In this case, Mrs. Steven Woods is pictured receiving the award.

SUCCESSFUL JOINT CONFERENCE
HELD IN ILLINOIS

The 22nd Annual Meeting of the Indiana Society of Professional Land Surveyors was held February 14, 15 and 16, 1974 at the Ramada Inn in Champaign, Illinois, in joint sponsorship with the 17th Annual Meeting of the Illinois Registered Land Surveyors Association. This was the first time that the meeting has been held away from Lafayette and the Purdue University campus. Although the attendance was down somewhat, there were a number of wives present. The registration committee reported the following attendance:

Indiana - Complete Conference Registration 60
Indiana - One Day Registration 46
Indiana - Students
Indiana - Ladies 29
TOTAL FROM INDIANA 145
Illinois - Complete Conference Registration 125
Illinois - One Day Registration 93
Illinois - Students 25
Illinois - Ladies 68
TOTAL FROM ILLINOIS 311
TOTAL ATTENDANCE OF REGISTRANTS 456
With 42 Exhibitors and 26 Speakers in addition to above registrants,
TOTAL REGISTRANTS 524



1974 OFFICERS OF INDIANA SOCIETY OF PROFESSIONAL LAND SURVEYORS
Seated, left to right: Gene Darnall, Columbus (Director); Wesley Day, Whiteland (Director); John McEntyre, West Lafayette (President); Zohrab Tazian, Fort Wayne (Secretary-Treasurer); Orwic Johnson, Columbus (Secretary-Treasurer Elect); standing: Kenneth Curtis, West Lafayette (Executive Secretary until June 1, 1974); M. Neil Franklin, Indianapolis (National Delegate to ACSM); Carl Anderson, Lebanon (Director); Rex Bowman, Lafayette (Director); and Brian Dickerson, Lafayette (Vice President). Absent were: William Tanke, Valparaiso (President Elect); Charles Campbell, Indianapolis (Director); and James Dankert, Indianapolis (Director).



1974 JOINT INDIANA-ILLINOIS LAND SURVEYOR CONFERENCE CHAIRMAN
Thomas Berns and his wife, Jeannie, are credited with the excellent overall supervision which led to a most successful joint conference at Champaign, Illinois.



1974 DISTINGUISHED SERVICE AWARDS OF ISPLS are awarded "in recognition of his valuable and outstanding service to the land surveying profession in the State of Indiana." This year's recipients are, left to right: Rex Bowman, Lafayette; John Beals, Richmond; Neil Franklin, Indianapolis; and Wesley Day, Whiteland.



1974 JOINT CONFERENCE BANQUET SPEAKER, Basil Moore, of Paris, Illinois, who presented "A Delightful Evening With Abe Lincoln," is flanked by the two state executive secretaries, Kenneth Curtis (Indiana), on the left, and Michael Kaminski (Illinois), on the right.

PUBLICATIONS AVAILABLE FROM
ISPLS HEADQUARTERS

Table with 4 columns: Quantity, Publication, Cost to Member, Cost To Non-member. Rows include I.S.P.L.S. Manual of Practice, I.S.P.L.S. Surveying Publication Series Manual No. 1, Manual No. 2, and Papers from the 1974 Joint Conference.

Name
Street
City State Zip
Member ISPLS yes no
Total Amount Enclosed \$

Mail To: ISPLS
111 N. Capitol Ave.
Indianapolis, Ind. 46204

(*Price includes postage)

WE NEED YOU....
YOU NEED US!

ISPLS encourages you to become a member! We now have a full-time staffed office which will enhance the image and growth of ISPLS, as well as carry out the defined goals.

We feel that you, as a member, will benefit in such areas as professional image, continuing education, governmental relations, etc. However, the most important part of ISPLS is the individual member who participates in the Society. Input from the local level is vital in defining and realizing our objectives.

Therefore, we urge you to complete the membership application and return it as soon as possible.

Membership Application

I am in agreement with the objectives of I.S.P.L.S., and hereby make application for membership as a Member ☐, Junior ☐, Associate ☐, Student ☐, (Check one.)

Annual dues payable on January 1, of each year are for: Member or Associate \$20.00, Junior \$10.00, Student \$2.00.



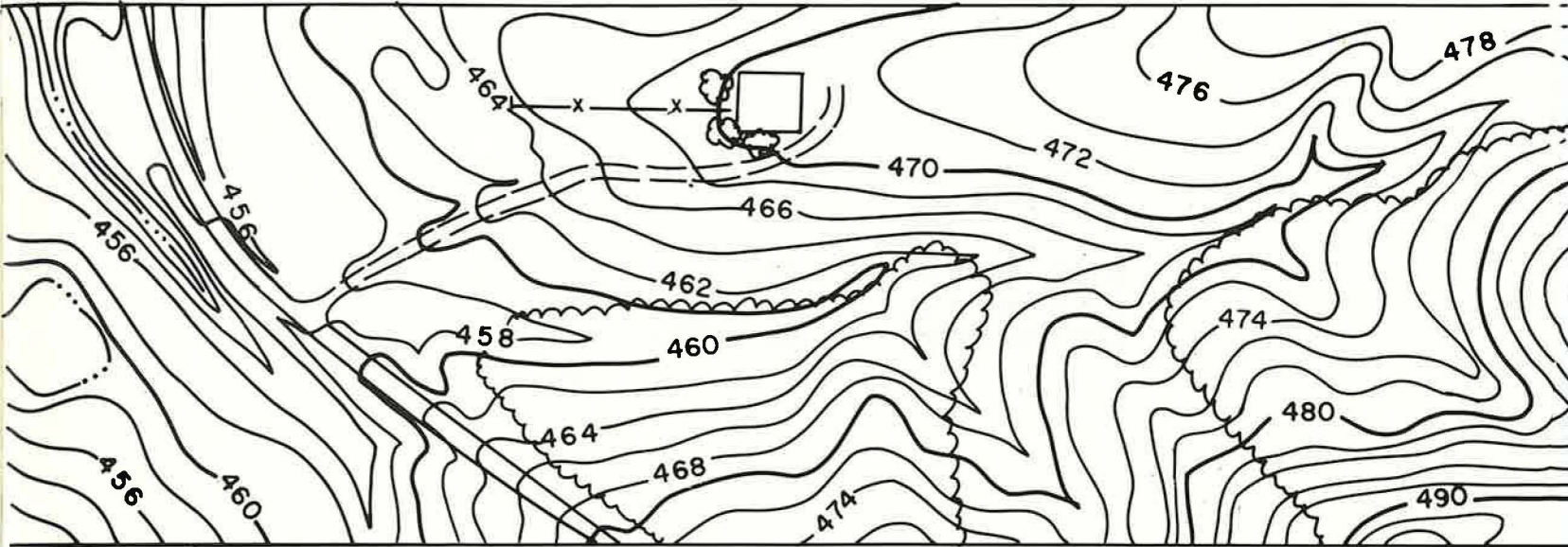
Name _____ Position _____
Home Address _____ Employed by _____
City _____ Zip _____ Business Address _____
Telephone No. _____ City _____ Zip _____
Registration Status: (Give Reg. No. and Branch) (CHECK ONE)
R.L.S. _____ ACTIVELY PURSUING REG.(J) _____
R.P.E. _____ ONLY AFFILIATED WITH PROF. (A) _____
Member of American Congress on Surveying and Mapping _____ Yes _____ No
Application submitted to: Name _____ Sec. Trea. _____
Address _____

Secretary-Treasurer

Application received _____ Current dues paid _____
Board of Directors

Application Approved _____

DICKERSON AERIAL SURVEYS



BASED AT PURDUE UNIVERSITY AIRPORT
TO PROVIDE INDIANA AND THE MIDWEST WITH
FAST, ECONOMICAL, DEPENDABLE SERVICE

WE OFFER FULL PLANNING ASSISTANCE
IN HELPING YOU FULFILL YOUR CLIENTS'
TOPOGRAPHIC REQUIREMENTS

das

BRIAN M. DICKERSON P.E., L.S.
2505 CAMBRIDGE RD. LAFAYETTE, IN 47905 317-474-9279

THE HOOSIER SURVEYOR
Indiana Society of Professional Land Surveyors
111 N. Capitol Avenue
Indianapolis, Ind. 46204

Bulk Rate
U. S. Postage
PAID
Indianapolis, Ind.
Permit No. 4056



You Pick The Spot.

Sidwell's engineering mapping service can give you detailed information on any spot you pick.

How? By using the latest precision mapping equipment and field-proven techniques. Result? Mapping tailored to your exact requirements, delivered when you need it . . . and at a price you can afford. Hard to believe? Not really.

Sidwell's highly trained professionals have been doing it for over 45 years.



THE SIDWELL COMPANY
SIDWELL PARK, 28W240 NORTH AVENUE
WEST CHICAGO, ILLINOIS 60185 (312) 231-0205
Serving the needs of industry and government for over 45 years.

Call today or write Dept. 15919 for our new brochure explaining our complete service.