

44-2 Fall 2017

# HOOSIER SURVEYOR


Quarterly publication of the Indiana Society of Professional Land Surveyors, Inc.

## FEATURED ARTICLE

Photo taken during the Initial Point Chapter's Land Surveyors Buffalo Trace Rendezvous.


[READ MORE](#) 

## IN THIS ISSUE

 Bob Vollmer Honored in Indy Honor Flight Program

 Completed Careers

 Hoosier Surveyor Photo and Video Contest Winners

 Legal Surveys





## 2017 Officers and Directors

### Term Expires Jan. 2018

**Vice President**  
**Eric Banschbach**  
 Indianapolis, IN  
 Office: 317-610-7251  
 Email: ebanschbach@indot.in.gov

**Treasurer**  
**Brent Friend**  
 Franklin, IN  
 Office: 317-713-4615  
 Email: bfriender@bfsengr.com

**Past President**  
**Rich Hudson**  
 Valparaiso, IN  
 Office: 219-462-2946  
 Email: rickandcal@comcast.net

**Director**  
**Don Williams**  
 Crown Point, IN  
 Cell: 219-734-7215  
 Email: drwilliams@dlz.com

### Term Expires Jan. 2019

**Director**  
**Vincent Barr**  
 Franklin, IN  
 Office: 317-293-3542  
 Email: vbarr@vsengineering.com

**President**  
**Bryan Catlin**  
 Clayton, IN  
 Cell: 317-327-4110  
 Email: bryan.catlin@indy.gov

**Secretary**  
**Alexander Fabian**  
 Munster, IN  
 Office: 219-836-8918  
 Email: alex.fabian@torrenga.com

**Director**  
**Norman Hiselman**  
 Avon, IN  
 Office: 317-846-6611  
 Email: hiselman@weihe.net

### Term Expires Jan. 2020

**Director**  
**David Myers**  
 Terre Haute, IN  
 Office: 812-238-9731  
 Email: jdm@myersengineering.com

**Director**  
**Ed Sweetland**  
 Indianapolis, IN  
 Office: 317-849-5832  
 Email: esweetland@b-l-n.com

**President-Elect**  
**Ryan Swingley**  
 Indianapolis, IN  
 Cell: 317-370-0400  
 Email: rswingley@espassociates.com

**Director**  
**Kurt Vonderheide**  
 Indianapolis, IN  
 Office: 317-636-4682  
 Email: kvonderheide@hntb.com

Masthead.....3  
 President's Message.....4  
 Bob Vollmer Recognized in the Indy Honor Flight Program.....6  
 In Case You Missed It: Top Articles Featured in the ISPLS Newsletter.....6  
 Completed Careers.....8  
 Randy Allen Wins Fall 2017 Hoosier Surveyor Video Contest.....10  
 Don Williams Wins Fall 2017 Hoosier Surveyor Photo Contest.....11  
 Upcoming Events.....11  
 Legal Surveys.....12-13  
 Initial Point Chapter's Land Surveyors Buffalo Trace Rendezvous Recap.....14  
 Ruckman Sculpture.....14  
 ISPLS Career Center.....15  
 Firm Members.....16-19

## FROM THE EDITOR

Deadlines for copy for various planned issues of the Hoosier Surveyor are as follows:

- Winter - February 1
- Spring - May 1
- Summer - September 1
- Fall - November 1

The Hoosier Surveyor is published quarterly by the Indiana Society of Professional Land Surveyors to inform land surveyors and related professions, government officials, educational institutions, libraries, contractors, suppliers and associated businesses and industries about land surveying affairs.

Articles and columns appearing in this publication do not necessarily reflect the viewpoints of ISPLS or the Hoosier Surveyor staff, but are published as a service to its members, the general public and for the betterment of the surveying profession. No responsibility is assumed for errors, misquotes or deletions as to its contents.



**Michael J Davis, Editor**  
 4310 Broadway Street  
 Indianapolis, IN 46205  
 Phone: (317) 283-4630  
 Email: mijdavis@iupui.edu

## CONTACT

9100 Purdue Road, Suite 200  
 Indianapolis, IN 46268

Phone: (317) 454-8309

Email: editor@ispls.org



L to R: Alexander Fabian, Munster; Rich Hudson, Valparaiso; Norman Hiselman, Avon; Bryan Catlin, Clayton; Ed Sweetland, Indianapolis; Brent Friend, Franklin; Dave Myers, Terre Haute; Eric Banschbach, Indianapolis; Don Williams, Crown Point; Kurt Vonderheide, Munster; Vincent Barr, Franklin. Not pictured: Ryan Swingley, Indianapolis.

## 2017 COMMITTEES AND CHAIRS

### COMMITTEE CHAIRS

<b>Education</b> Chair: Austin Yake	<b>Ethics</b> Chair: Rich Hudson	<b>Finance</b> Chair: Brent Friend	<b>Legislation</b> Chair: Gary Kent	<b>Membership</b> Chair: Ed Sweetland
<b>Nominations</b> Chair: Ryan Swingley	<b>Past President's Council</b> Chair: Rich Hudson	<b>Publications</b> Chair: Mike Davis	<b>Scholarship</b> Chair: Luke Jahn	<b>Trig Star</b> State Coordinator: Tony Gregory

### ISPLS LIAISONS

<b>Board of Registration</b> Liaison: Jacob Hoffman Alternate: Jason Coyle	<b>County Surveyors</b> Liaison: David Gaston	<b>Indiana's NSPS Director</b> Director: Tony Gregory Alternate: Don Bengle	<b>Geodetic Control Workgroup</b> Co-Liaisons: Eric Banschbach Matt Healy
--	--	---	--



## PRESIDENT'S MESSAGE

By 2017 ISPLS President, Bryan F. Catlin, PS

**G**reetings,

All of you who use Facebook have probably seen posts from friends and family about how they are currently feeling. I'd like to start by noting that I am feeling thankful and grateful. Thankful that I have gotten to know more of you this year and grateful for all that each of you do for ISPLS and the profession



in small as well as large ways. I have been to several chapters this year and have been inspired by the many ways members engage with each other, students and the public. My message this time is more of a hodge-podge, but there are several things that I would like to let the membership know are going on.

The biggest probably relates to the transition in the day-to-day management of ISPLS. After the initial contract period where both RGI and ISPLS had a chance to see what services were needed and the effort that would take, earlier this year, the ISPLS Board of Directors approved a new contract with Raybourn Group International to provide management for ISPLS for a three-year period (2017-2020). I am especially grateful for the smooth transition that Jason Coyle and Banning Engineering made possible after seeing a less-desirable situation occur where another organization's staff left a short time before their annual conference and an association management firm had to be brought on board in short order to pick up the pieces and move forward as best they could. Thanks again to Jason and the management at Banning.

While I won't go over all of the work that volunteers do on committees for ISPLS, a few of the committees that affect many of us should be noted.

After years of service, Mark Gardner asked to step aside from Nominations Committee and Ryan Swingley stepped in with a plan to attract a more geographically diverse group of committee members and candidates for both the Presidential and Board of Directors elections. Thank you Mark and Ryan.

Our ISPLS lobbyist, Michael O'Brien, has done a good job of watching out for our interests at the legislature. We have achieved most of our legislative goals in the past but we need to have more goals like our Right of Entry and the Statute of Repose statutes. Having a lobbyist is important to protecting our interests from others, but without goals of our own, we would only be getting part of the benefit of the

lobbying services we pay for. I asked Gary Kent to lead a renewed Legislative Committee as we again look for ways to advance our and the public's interests at the legislature. This is one area that the management transition probably took some attention away from and I am pleased to know that we are planning to pursue a small technical agenda of items this short legislative session. These include cleaning up the statutes dealing with using coordinates in land descriptions so they are more aligned with current practice and current and future coordinate systems, cleaning up a loophole dealing with adverse possession and legal surveys, and a change to the recordation statute to require information about the source of the description in deeds, etc.

This last item could be satisfied by noting the surveyor (or attorney) who prepared the description or a reference to a prior recorded instrument. In addition, ACEC-Indiana asked if we would like surveyors to be included in contract indemnification reform they are bringing forward as one of their priorities. I am very grateful that other professionals are asking us about potential bills like this before they pop up during the legislative session. I don't know, but I wouldn't be surprised if our success before the Job Creation Committee may have not gone unnoticed by the engineers. If you are wondering, we also have a list of items we would like to move forward on during the longer 2019 budget writing session of the legislature. Thank you Gary and Michael. This committee currently includes: Gary, the current ISPLS president, president-elect and immediate past-president, Senator Blake Doriot, representatives from the Indiana County Surveyors Association (since our interests are often closely aligned) and one or two other volunteers from the membership.

As all of you read your regular emails from ISPLS, I'm sure you have noticed that we have a contest for surveying related photographs and videos. Besides a chance to win up to \$100, this is a great way to gather content to be used in the Hoosier Surveyor and in ISPLS Social Media. Please consider sending in images of the things you do, see and find in the field and office. Please like and share the ISPLS posts that interest you (be professional, the ISPLS Board of Directors recently adopted a Social Media policy). You never know what might spark the interest of a future, or current, surveyor in your group of friends, and their friends, and their friends, etc. It is sometimes hard to explain to others how, why and what we do as surveyors, and I know many of us aren't always comfortable speaking before groups, but this is a way to share some of what we do with others that may travel farther than we know. I recently shared the post about Bob Vollmer's trip to Washington with Honor Flight-Indy along with a short note. I got feedback I didn't expect. I believe one reason is that people are intrigued with a profession that a one-hundred-year-old

man hasn't retired from. Remember, we often get to see things others don't and see other common things in ways that non-surveyors don't. Let's share some of that.

Briefly, we will be rotating our conference around the state after 2018. I know many of us are looking forward to that. We are also in the process of getting our first ISPLS webinar ready for use. I could go on, but I want to thank you all for the opportunity to serve the surveyors of Indiana this year. I'm thankful and grateful.

Bryan F. Catlin, PS  
2017 ISPLS President



## Investigate before you Excavate

Underground utility locating  
Diagnostic sewer inspections  
Ground penetrating radar  
Vacuum excavation  
Concrete scanning

Locate water, electric, sewer, gas, communication  
Precise location and depth  
Locate storage tanks, plastic water lines  
Family owned and operated for over 20 years  
10% off

UndergroundDetective.com 888.747.3799



## BOB VOLLMER RECOGNIZED IN THE INDY HONOR FLIGHT PROGRAM

On October 21, 2017, ISPLS Lifetime Member Bob Vollmer was an honoree on the Indy Honor Flight in recognition of his service to our country during World War II. Bob, along with 87 fellow veterans, was transported to Washington, DC to visit the war memorials.

Upon returning to Indy that afternoon, the veterans were celebrated with a pep rally at Plainfield High School alongside family and friends. Bob received a letter from ISPLS

President Bryan Catlin, PS thanking him not only for his dedication and service to the land surveying profession, but to our nation as well. [Click here](#) to read Bryan's letter to Bob.

To view photos from the program, [click here](#). For more information on the Indy Honor Flight program, visit [www.indyhonorflight.org](http://www.indyhonorflight.org).



Bob Vollmer (center) pictured at the pep rally with Ed Sweetland (left), Frank Ballintyn and ISPLS President Bryan Catlin (right) holding a welcome sign on behalf of ISPLS membership with signatures from the Central Indiana Chapter.



### IN CASE YOU MISSED IT:

Top Articles Featured in the ISPLS Newsletter | [September 2017 - November 2017](#)

[The Day GPS Went Away](#)

[September 12 Newsletter](#) | [GPS World](#)

[The Importance of Narratives](#)

[September 26 Newsletter](#) | [NSPS News and Views](#)

[I Was Meant to Be a Surveyor](#)

[October 10 Newsletter](#) | [xyHt](#)

[Bob Vollmer Recognized in the Indy Honor Flight Program](#)

[October 24 Newsletter](#) | [ISPLS](#)

[Unmistakable Marks: The Dictionary is Not Always a Fortress](#)

[November 14 Newsletter](#) | [POB Online](#)

[Store-bought or Homegrown? Mentors for the Future](#)

[November 28 Newsletter](#) | [xyHt](#)

Have an article you want to see in the ISPLS Newsletter? Email [Kayla Jenkins](#)

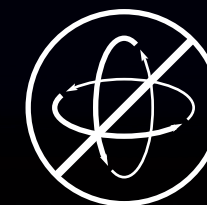
# THE WORLD'S FASTEST GNSS RTK ROVER

Introducing the **Leica GS18 T**, the first true tilt compensation solution that is immune to magnetic disturbances. The bubble no longer has to be centered. As a matter-of-fact, you can forget about the bubble. In addition to that, the system is calibration-free, so no long-winded procedures are required.

Just turn it on and go.



First True  
Tilt Compensation



Works Out Of The Box,  
Calibration-Free



Immune To Magnetic  
Disturbances

[www.ForgetTheBubble.com](http://www.ForgetTheBubble.com)



For more information please contact:  
[Steve.Myer@leicaus.com](mailto:Steve.Myer@leicaus.com)  
765-413-2054

**Leica**  
Geosystems



COMPLETED CAREERS

Charles Anthony Peoni

Charles Anthony Peoni, 59, passed away on Friday, November 10, 2017. He was born on January 9, 1958 in Beech Grove to Samuel J. and Rosemary (Palamara) Peoni.

Charlie was a civil engineer with VS Engineering.

Survivors include his loving wife of 29 years, Patsy Peoni; mother, Rosemary Peoni; brother, Paul Peoni; nephews and niece, Mark Peoni, Morgan Peoni, Brandon Strader and Bradley Smith. He was preceded in death by his father.

Family and friends gathered on Tuesday, November 14 from 3 to 8 p.m. in Lauck & Veldhof Funeral & Cremation Services, with a rosary service at 7:30 p.m. A Mass of Christian Burial was celebrated on Wednesday, November 15, 2017 at 10 a.m. in St. Roch Catholic Church, 3600 S. Pennsylvania St., with prayers being said prior to Mass at 9:30 a.m. in the funeral home. Burial followed in Calvary Cemetery.

Chester Ziemniak

Chester was born on May 14, 1927 and passed away on Wednesday, October 11, 2017. Chester was a resident of Highland, Indiana at the time of passing. Mr. Ziemniak was a veteran of the US Navy, a member of Indiana Society of Professional Land Surveyors, and a registered Civil Engineer and Land Surveyor.

Fagen Miller Funeral Homes - Highland 2828 Highway Avenue Highland, IN 46322 pre-service prayers 16 Oct 10:00 AM Fagen Miller Funeral Homes - Highland 2828 Highway Avenue Highland, IN 46322 16 Oct 10:30 AM Our Lady of Grace Church 3025 Highway Ave Highland, IN 46322 memory of Chester.

Services will be held on Monday, October 16, 2017 beginning with prayers at Fagen-Miller Funeral Home 2828 Highway Ave., Highland, at 10:00 a.m. followed by a mass at Our Lady of Grace Church at 10:30 a.m. with Rev. Edward Moszur officiating. Interment at Holy Cross Cemetery, Calumet City, IL.

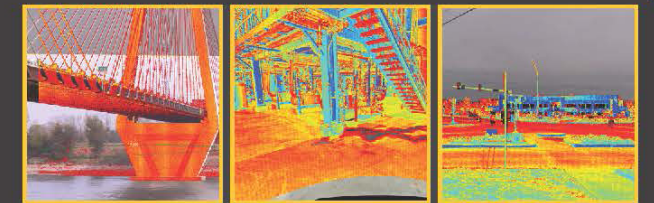
Visitation was held on Sunday from 2:00 p.m. - 6:00 p.m. at the Fagen-Miller Funeral Home, 2828 Highway Avenue Highland, IN 46322.

In lieu of flowers, memorial contributions are requested to the Humane Society of Indianapolis, 7929 N. Michigan Rd, Indianapolis, IN 46268. Online condolences: [www.LauckFuneralHome.com](http://www.LauckFuneralHome.com).



Trimble® SX10  
The Scanning Total Station

A new standard for surveying performance by truly merging high speed 3D scanning, enhanced Trimble VISION™ imaging and high-accuracy total station measurements all into familiar field and office workflows.



- 1 machine.** Infinite possibilities.
- Dense scan data measurements at **26,600 points per second**
- 360-degree x 300-degree field of view** with high precision over the entire range
- Impressive **600 m scan range** with a mere **14 mm at 100 m spot size**
- Coarse full dome scan captures in just **12 minutes**
- Seamless operation with **Trimble Access**
- Highly precise **data and deliverables** via Trimble Business Center

Learn more at [Trimble.com/SX10](http://Trimble.com/SX10)



Contact us for a demo today.  
Email: [solutions@seilerinst.com](mailto:solutions@seilerinst.com) or toll free 888-263-8918

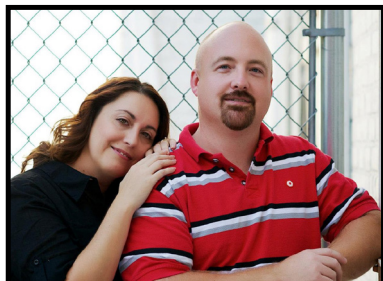
ST. LOUIS · KANSAS CITY · MILWAUKEE · INDIANAPOLIS · OMAHA  
[www.seilerinst.com](http://www.seilerinst.com)



## RANDY ALLEN WINS FALL 2017 HOOSIER SURVEYOR VIDEO CONTEST

By Ashlea Alley

The winner of the Fall Hoosier Surveyor Video Contest is Randy Allen, for the video he shared on social media of a street-scape improvement project for the West Virginia Department of Transportation.



providing for his family. His biggest fan and champion in his life is his wife, Carmen.

“When I first mentioned something about going back to college, Carmen encouraged me to dream big and go for it,” Randy said. “It wasn’t easy and there were a few times I wasn’t sure it was worth it, but she kept pushing me and encouraging me. She wouldn’t let me quit. They say behind every good man, is a great woman!”

Randy is currently employed as the Mapping Project Manager and Office Manager for ESP Associates, P.A., working on a variety of projects ranging from managing 3D CAD mapping, QA/QC of calibrated point clouds and just about anything else that is asked from ESP clients. Of all the areas he’s involved in, Randy says he is most passionate in 3D CAD mapping.

“Being able to create an engineering grade 3D model that represents a true world topography that is used to plan a road, install a sidewalk, improve a city street-scape, replace or build a bridge, etc. ... all mostly within the comforts of my office chair just amazes me,” Randy explained.

The Hoosier Surveyor Photo and Video Contest was created to showcase and applaud the critical work land surveyors are doing in the community, raise awareness to the industry, and encourage students to join the profession. To learn more, visit [www.ispls.org](http://www.ispls.org).



Randy, an associate member of the Central Indiana Chapter of the Indiana Society of Professional Land Surveyors, hasn’t been surveying his whole life. He actually went back to school at the age of 35, all while working full time, volunteering at church, owning his own DJ company and

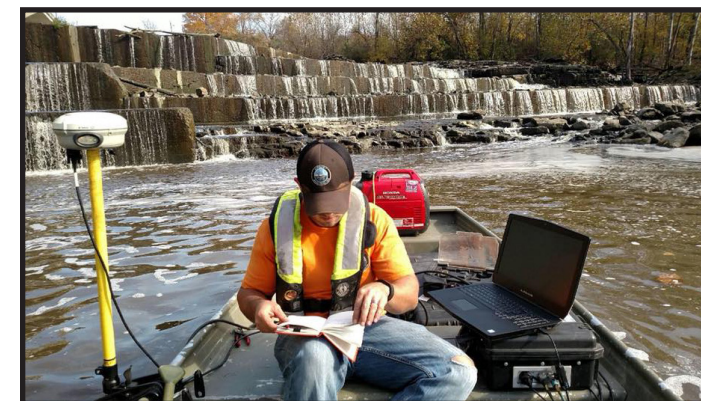
## DON WILLIAMS WINS FALL 2017 HOOSIER SURVEYOR PHOTO CONTEST

By Kristen Gandenberger

The winner of the most recent Hoosier Surveyor Photo Contest is Don R. Williams Jr. for the photo he shared on social media of a coworker surveying a dam.

In the fall contest, participants were challenged to capture an image that represents the unique aspects of the profession to encourage students to pursue a career in surveying. William’s entry best aligned with the theme and requirements for this issue, deeming him a worthy winner of the contest.

The winning photo depicts Dave Carmien, a Project Manager that works with Williams, performing a hydrographic surveying of the downstream side of a dam on the O’Shaughnessy Reservoir in Columbus, Ohio. The snapshot captures many of the most loved facets of surveying, including the interesting outdoor surroundings and industry technology.



Williams encourages young people to consider surveying. “Don’t be afraid to talk to an existing surveyor,” he said. “If you want to know more about the profession look up your local survey offices and call them. Most would be happy to sit down and tell you more about what they do.”



Williams, a member of the Northwest Chapter of the Indiana Society of Professional Land Surveyors, is currently employed as a Construction Survey Department Manager for DLZ Industrial, LLC, where he has the opportunity to perform varying types of surveys on many different kinds of construction side jobs. He especially enjoys the sense of accomplishment that comes along with being able to point out a finished project to his kids.

“I love the daily variety in the projects I work on, not to mention the new technologies that are coming out on a yearly basis. It’s very cool to see the way surveying is being transformed by new developing technology, yet the core values that have been established over hundreds, even thousands of years are still in place. You get to touch history and dabble in the future,” Williams explained.

The Hoosier Surveyor Photo and Video Contest was created to showcase and applaud the critical work land surveyors are doing in the community, raise awareness to the industry, and encourage students to join the profession. To learn more, visit [www.ispls.org](http://www.ispls.org).

### ISPLS Upcoming Events



Save the date for upcoming ISPLS and ISPLS Chapter meetings and events. Click on an event for details.

**Central Indiana Chapter Meeting**  
Thursday, March 15, 2018

**Southwest Chapter Meeting**  
Tuesday, March 20, 2018

**PS Exam Review Seminar - Spring 2018**  
Saturday, April 7, 2018

**Southwest Chapter Meeting**  
Tuesday, May 15, 2018

**Central Indiana Chapter Meeting**  
Thursday, May 31, 2018



## LEGAL SURVEYS

By ISPLS President, Bryan F. Catlin, PS

The goal of this column is to provide brief summaries of recent Indiana Court of Appeals and Supreme Court cases involving topics related to surveying practice, certainly not to provide legal advice. Information is gathered from the courts website at [www.in.gov/judiciary](http://www.in.gov/judiciary). Comments or suggestions for future columns are welcome by email to: [Bryan.Catlin@indy.gov](mailto:Bryan.Catlin@indy.gov).



**James Van Ella v. VanHorne Properties, LLC, Indiana Court of Appeals Case No. 76A03-1607-CC-1699, July 27, 2017**

In 1950, Bod's Beach Subdivision was recorded in Steuben County. Lots 1 through 20 fronted on Bass Lake and had a twenty-five-foot roadway easement along the back side of the lots. In 1970, the owners of lots 3-14 and 18-20 (and some other land between some of these lots), filed a petition to vacate those lots and the easement. The petition, granted by the trial court, alleged that "vacating the same is not interfering with the rights of any other property owners in said plat, and therefore, no other owners are affected thereby." The petitioners also stated that the proposed vacation would not leave other real estate without egress and ingress or create any great inconvenience to the public.

Now, Golden Eagle Mining and Recovery, Inc., controlled by VanElla (VanHorne and VanElla are both spelled with and without a space in the case summary), owns lots 4-14, 19 and 20. The other lots are owned by other private owners who use the easement area for access. In January of 2015, VanHorne purchased lots 16, 17 and parts of 18 at a sheriff's sale. VanElla acknowledges that the other owners have a right of ingress and egress over portions of the easement, but he has restricted use of the easement. VanElla constructed a barn extending twelve feet into the easement, parks a dump truck in the easement, constructed a fence in the easement and has previously dug depressions in the road to serve as speed bumps. The road is in poor condition and VanElla refuses to let the sixteen-foot-wide dirt and sand road to be maintained or repaired. VanHorne filed a complaint seeking to maintain and use the road, remove obstructions, restrict VanElla from harming or impairing the roadway, and damages and attorney fees as a result of VanElla's intentional actions.

Eventually the Steuben Circuit Court granted a final judgment to VanHorne noting that the 1970 petition did not include the lots owned by VanHorne so those easement

rights could not be vacated and that both VanHorne and VanElla have the right to make reasonable and necessary repairs to the twenty-five-foot easement and that no one could take any action that would unreasonably impede VanHorne's use of the entirety of the twenty-five-foot easement. VanElla appealed.

VanElla argued the 1970 order was valid. The Appeals Court affirmed the trial court decision noting that the 1970 vacation could not affect the easement rights of lot owners not a party to the vacation and there was no evidence those owners were even served with notice of the petition to vacate the easement.

**Luther T. Collins v. Metro Real Estate Services, LLC, Indiana Court of Appeals Case No. 88A05-1510-PL-1797, August 3, 2017, OPINION ON REHEARING**

Here, the situation described in the prior issue of the Hoosier Surveyor has changed somewhat. As a reminder, the original case summary follows in italics.

***Luther T. Collins v. Metro Real Estate Services LLC, Indiana Court of Appeals Case No. 88A05-1510-PL-1797, April 18, 2017***

*Here Joseph Howell owned two parcels in Washington County. The southerly parcel was along Mount Carmel Road, and the northerly parcel only had access to Mount Carmel Road across the southerly parcel. Collins later purchased the southerly parcel at a sheriff's sale. Prior to the sheriff's sale, Howell mortgaged the northerly parcel to Old Capitol Mortgage. In order to "facilitate" the mortgage, Howell granted himself a 150' easement across the southerly parcel from Mount Carmel Road to the northerly parcel (both ends of the "easement" area were fenced with no gates). Collins did not object to Howell continuing to cross his property to get to and from the northerly parcel. The northerly parcel eventually was foreclosed on and sold to Metro. Collins objected to Metro using the easement and filed a complaint to quiet title with the Washington Circuit Court. The trial court entered judgment for Metro and Collins appealed.*

*The Appeals Court noted that the trial court recognized the easement that Howell had executed as well as an easement of necessity. The Appeals Court noted that the unity of title did not allow Howell to grant himself an easement; however, because the northerly parcel was landlocked, it fit the definition of an easement of necessity. The trial court finding that an easement exists for Metro's benefit over Collin's property was affirmed. There was no conclusion about whether a 150-foot-wide easement was necessary, or where the easement should be, as no evidence address-*

*ing these questions was presented at trial.*

Metro has now sold the property to a third party with access to a public way through an adjoining property, but who still wishes to use an easement across Collin's property. The sale had been brought up on appeal, but the court then said they were deciding the case solely on the trial court record. The Appeals Court now agrees with the rehearing petition to the extent that whether an easement of necessity still exists is a matter that should be litigated between Collins and the new property owner. The original opinion was affirmed and the case was remanded back to the trial court for further proceedings.

**Audrey Mullins and Danny Mullins v. Robert Maas and Gail Maas, Indiana Court of Appeals Case No. 44A03-1611-MI-2631, July 27, 2017 MEMORANDUM DECISION**

The Mullinses purchased property in the plat of Brushy Prairie (primarily Lot 14) in LaGrange County in 1981 without a survey. Between 1981 and 2006, they made some use of a disputed parcel which consisted of parts of Lots 13, 23 and 24, planting/maintaining bushes, trees, grass, bird feeders and burn barrels on it. During the same time period, Linda Lee Perkins believed she owned the disputed parcel and also used it, hiring someone to mow it and owning a pole barn partially in it. In 2006, Perkins sold to the Maases by a deed that included the disputed parcel. The LaGrange County Auditor later determined Perkins did not possess legal title to the disputed parcel. In 2013, a survey revealed that the Mullinses' property did not include the disputed parcel.

The Mullinses filed a complaint for adverse possession in the LaGrange Superior Court in October of 2013, and after a bench trial the court entered a judgment in favor of the Mullinses on December 31, 2014. On January 30, 2015, the Maases filed a motion to correct error with a newly elected judge which was eventually granted based on a finding that the Mullinses had failed to establish control, intent and notice. The Mullinses appealed and the trial court judgment was affirmed.

**Jamison L. Beetz and Leah J. Beetz v. Joe D. Bryant and Anne E. Bryant Revocable Trust, Joe D. Bryant and Anne E. Bryant, Stephen A. Legan and Jenifer A. Legan, and Ron Zimmerman and Donna Zimmerman, Indiana Court of Appeals Case No. 41A04-1612-PL-2755, July 28, 2017 MEMORANDUM DECISION**

Here a property in Johnson County was divided into four parcels, and an easement across a private bridge to allow access to Stones Crossing Road was created in 1979. The Brown County Circuit Court issued an agreed judgment in

1982 that included a new easement in the same location. One party recorded the judgment in their chain of title in Johnson County, but the other, who owned the parcel the bridge was on and eventually sold that parcel to the Beetzes in 2013, did not. The Beetzes were aware of the 1979 easement. A fire truck struck and damaged the bridge, and a dispute arose over who could accept payment from the fire department, hire a contractor and pay for bridge repairs. The Beetzes sued in the Johnson Superior Court seeking declaratory judgment. On a motion from the defendants, the court dismissed the complaint. The Beetzes then filed an amended complaint asking, among other things, if the 1982 judgment applied to them. Again this was dismissed and the Beetzes appealed.

Here, the appeals court found that since the 1982 judgment was not in the Beetzes' chain of title, the Beetzes have alleged facts pursuant to which they would be entitled to declaratory relief on their claim of not being bound by the 1982 judgment and easement. The judgment of the trial court was reversed and remanded for further proceedings.

**Donald Miller and Dorothy Miller v. Crawfordsville Electric Light and Power and City of Crawfordsville, Indiana Court of Appeals Case No. 54A01-1608-PL-2048, September 20, 2017 MEMORANDUM DECISION**

Here herbicide was applied to trees on the property in question by a line clearance supervisor for Crawfordsville Electric Light and Power (CELP) on June 20, 2013. The Millers bought the property on August 9, 2013, after meeting with the supervisor in the later part of July when CELP offered to take down the trees and clean them up and provide a Pro-Green voucher. Later payment as well as removing and cleaning up the trees was offered and the trees were scheduled to be cut down on August 26, 2013. Donald Miller objected before the date the trees were to be cut down and on March 3, 2014 filed a complaint in the Montgomery Circuit Court. CELP asked for summary judgment, arguing in part that the Millers had not filed a timely notice of claim (180 days) as required by IC 34-13-3-8. This was denied and the case proceeded. On August 1, 2016, the trial court dismissed the Millers' complaint as not having been filed in a timely manner.

The Millers appealed and the trial court's order dismissing the Millers' complaint was affirmed.

*Bryan F. Catlin, PS has been registered as a Land Surveyor in Indiana since 1991. He holds B.S. Land Surveying Engineering and M.S. Engineering (Geodesy) degrees from Purdue University.*



## INITIAL POINT CHAPTER'S LAND SURVEYORS BUFFALO TRACE RENDEZVOUS RECAP

On October 13 through October 15, the Initial Point Chapter of ISPLS hosted their inaugural Land Surveyors Buffalo Trace Rendezvous; a wonderful outdoor Continuing Education event. The 12 guest speakers included Surveyors from Texas, William Boden and William Jackson Cash. Also featured was Alabama Surveyor and Educator Milton Denny, Centenarian Robert Vollmer, Kentucky LS Ben Shinabery and Paige with their Flying Drone Sessions, Randall Miller for Indian treaties, as well as many local speakers from Indiana and Kentucky.

The North Bank of the Ohio River overlooking the Buffalo Trace made for a magical and natural historic setting. The scenic site is the home of the Commander of the Western Armies, General George Rogers Clark, and is the site of the launch pad of the Lewis and Clark Expedition.

The warm fall days were filled with sunshine and smells of campfires as attendees visited the Mark Gardner Buffalo TeePee Camp, an escape back into times gone by.

The gracious volunteer speakers held sessions in two large tents where attendees could attend the session of their choice, all for free!

Milton Denny remarked that this type of grass roots event, with our dedication being the education of Boy Scouts, will

help prepare future Surveyors to meet our nation's land boundary and mapping needs.

The casual, open forum discussions led to a fantastic learning experience.

The Surveyors of the Initial Point Chapter hope that some or all of the other ISPLS Chapters might hold an event similar to this, but in their own way, bringing Surveyors together to share in a natural outdoor environment.

The proceeds from donations and sponsors were given to the Boy Scouts of America. BSA had 18 Boy Scouts who worked at the event with 12 parents assisting. Seven attending Surveyors oversaw and taught the criteria for the Boy Scout Surveying Merit Badge and 15 Scouts earned their Surveying Merit Badges. The local BSA earned over \$1,200 from the attending Land Surveyor's donations and food sales.

The event was sponsored by Precision Products of Louisville Kentucky, who generously donated \$2,000 to defray costs of the event and provided equipment display, demonstrations and speakers for the event.

"Wow, the old and the new, together in one event. Awesome and fun. Let us do this again," said Drone Master LS, Ben Shinabery.

### Ruckman Sculpture



This 18-ton block of limestone from the Bedford Quarry is one of two being transformed into sculptures of buffaloes by ISPLS member David J. Ruckman, PS, that will be part of a newly created Buffalo Trace Art Park in New Albany. The site on Daisy Summit Road will also feature a storyboard on the Buffalo Trace and stone benches offering a place to rest, learn about history and enjoy the views. A formal unveiling is scheduled at 5 p.m. May 8. Ruckman, an author as well as a sculptor, artist and land surveyor, gave a presentation titled "Retracement of the Indiana Buffalo Trace" at the 2017 ISPLS Convention. (Photo by David J. Ruckman, PS)



## ISPLS Career Center

New job postings in the ISPLS Career Center. Have a position to share? Submit an opening today!

**Survey Crew Chief/Surveying Technician**  
Territorial Engineering LLC  
Walkerton, IN

**Section Corner Technician**  
Hamilton County Surveyor's Office  
Noblesville, IN

**Survey Technician**  
Lang, Feene & Associates, Inc  
South Bend, IN



# HARRISONs

are stubborn!

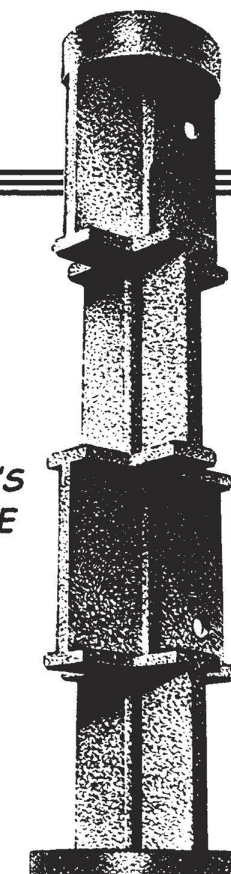
HARRISON markers are highly magnetic with the tenacious position-holding features that surveyors need.

If struck by a plow the top can crack off, and the bottom will hold its position.

**HARRISON**  
**MARKER CO.**

Box 66, Anoka, MN 55303  
Telephone (763) 421-1445

NOTE  
THE  
MARKER'S  
UNIQUE  
SHAPE



—AND SEE  
HOW IT  
RESISTS  
SIDE AND  
PULL-OUT  
THRUSTS.







<p><b>American Structurepoint, Inc.</b> 7260 Shadeland Station Indianapolis, Indiana 46256 P: (317) 547-5580 E: bmoll@structurepoint.com</p> <p><a href="http://www.structurepoint.com">www.structurepoint.com</a></p>	 <p>Civil Engineering / Land Surveying</p> <p><b>Brian L. Haggard, R.L.S.</b> Vice President BHaggard@BanningEngineering.com <a href="http://www.BanningEngineering.com">www.BanningEngineering.com</a></p> <p>Cell: (317) 563-6246 Direct: (317) 707-3719 Direct Fax: (317) 707-3619</p> <p>853 Columbia Road, #101 Plainfield, IN 46168</p>
<p><b>Edward J. Sweetland, PLS</b> <i>Survey Department Manager</i></p> <p>8126 Castleton Road ■ Indianapolis, IN 46250 p: 317-849-5832 ■ f: 317-841-4280 ■ c: 317-443-7812 e: esweetland@B-L-N.com</p>  <p><b>Beam, Longest and Neff, L.L.C.</b> Consulting Engineers &amp; Land Surveyors</p>	 <p>8450 Westfield Blvd., Suite 300 Indianapolis, IN 46240-5920 T 317.713.4615 F 317.713.4616 E BFS@BFSEngr.com</p> <p><a href="http://www.BFSEngr.com">www.BFSEngr.com</a></p>
 <p>Architects + Engineers</p> <p><b>Eric C. White, RLS</b> Survey Project Manager ewhite@cripe.biz</p> <p>3939 Priority Way South Drive, Suite 400 Indianapolis, Indiana 46240 Telephone + Facsimile 317 706 6333 <a href="http://www.cripe.biz">www.cripe.biz</a></p>	 <p>ARCHITECTURE • ENGINEERING • PLANNING SURVEYING • CONSTRUCTION SERVICES</p> <p>INNOVATIVE IDEAS EXCEPTIONAL DESIGN UNMATCHED CLIENT SERVICE</p> <p><b>STEVEN A. JONES, PLS, CFEDS</b> SURVEY PROJECT MANAGER</p> <p>OFFICE 574.236.4400 EMAIL sjones@dlz.com DIRECT 574.245.1672 WEBSITE www.dlz.com</p>
<p><b>DONOVAN ENGINEERING, INC.</b></p> <p>3521 Lake Avenue, Ste. 2 Fort Wayne, IN 46805</p> <p><b>Gregory L. Roberts, PS</b> Phone: 260-424-7418 President Fax: 260-494-7419 greg@donovan-eng.com</p> <p><a href="http://www.donovan-eng.com">www.donovan-eng.com</a></p>	 <p><b>David G. Croft, PS</b> Assistant Survey Manager</p> <p>6420 Castleway West Drive Indianapolis, IN 46250 T 317.570.6800 ext. 4502 C 219.477.7580 F 317.570.6810</p> <p><a href="http://www.gaiconsultants.com">www.gaiconsultants.com</a> d.croft@gaiconsultants.com</p>

<p><b>L. Edward Rinehart, Jr., PLS</b> Vice President</p>  <p>engineering   architecture   geospatial</p> <p><b>GRW</b></p> <p>801 Corporate Drive Lexington, KY 40503 Tel 859.223.3999 Fax 859.519.4507 erinehart@grwinc.com</p>	 <p><b>Ross Holloway, PE, PLS</b> President</p> <p>phone: 317.831.7918 800.831.7918 fax: 317.831.8255</p> <p>PO. Box 234 Mooresville, IN 46158 Web: hollowayengineering.com</p>
<p><b>John H. Stephens R.L.S. Inc.</b> 19 N. Wabash St. Wabash, IN 46992 P: (260) 563-8800 E: jhstephens1953@gmail.com</p> <p><a href="http://www.jhsrls.com">www.jhsrls.com</a></p>	 <p><b>KRAMER &amp; ASSOCIATES, LLC</b> Bradley J. Kramer, P.S., L.S. Project Coordinator bradkramer@kramer2000.com</p> <p>Excellence In People, Service and Solutions</p> <p>101 N. Barron St. FAX 2009 Chester Blvd. Eaton, OH 45320 937-456-6912 Richmond, IN 47374 937-456-1332 www.kramer2000.com 765-935-2696</p>
 <p><b>Matthew E. Wannemuehler, PE</b> Administrator of Engineering/Surveying mew@lochgroup.com T: 812.759.4151 C: 812.459.6207</p> <p><a href="http://www.lochgroup.com">www.lochgroup.com</a></p> <p>6200 Vogel Road Evansville, Indiana 47715</p>	 <p><b>Chris F. Marbach</b> Professional Land Surveyor President chris@marbachpls.com</p> <p><i>Engineering &amp; Surveying Since 1918</i></p> <p>INDOT 3.1 3.2 6.1 8.1 11.1</p> <p>3220 Southview Drive ~ Elkhart, Indiana 46514 Phone: (574) 266-1010 ~ Fax: (574) 262-3040 info@marbachpls.com ~ www.marbachpls.com</p>
 <p>ARCHITECTS   ENGINEERS   SURVEYORS</p> <p><b>BRET A SERMERSHEIM PS</b> 812.464.9585 Office Vice President Surveying, VP Midwest 812.464.2514 Fax</p> <p>brets@morleycorp.com 4800 Rosebud Ln. 812.499.6892 Mobile Newburgh, IN 47630</p>	<p><b>Northpointe Engineering &amp; Surveying, Inc.</b> 6125 S. East Street, Suite B Indianapolis, IN 46227 P: (317) 884-3020 E: donna@npes.biz</p> <p><a href="http://npes.biz">npes.biz</a></p>



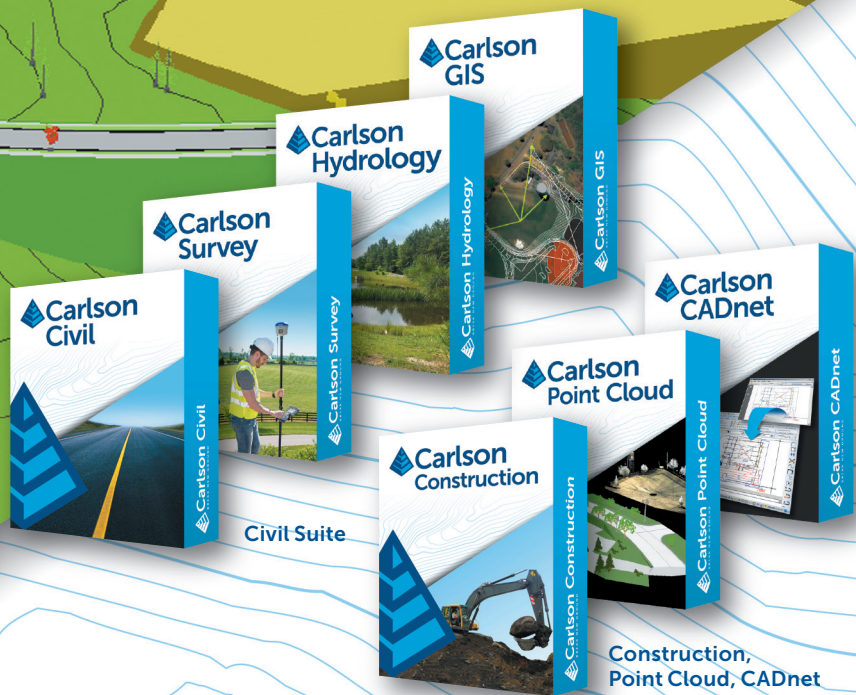
<p><b>Parsons Cunningham &amp; Shartle Engineers, Inc.</b>          1924 Dan Jones Road          Avon, IN 46123          P: (317) 837-9900          E: Cheryl@pcseniengineers.com  <a href="http://www.pcsengineers.com">www.pcsengineers.com</a></p>	<p><b>Pietzack Land Surveying, Inc.</b>          24891 Kern Road          South Bend, IN 46614          P: (574) 289-4037          E: geojoep@aol.com  <a href="http://pietzkaklandsurveyinginc.com">http://pietzkaklandsurveyinginc.com</a></p>
<p><b>Plumb, Tuckett &amp; Associates</b>    <b>Donald L. Plumb</b>          Registered Land Surveyor  <a href="http://www.plumbtuckett.com">www.plumbtuckett.com</a>  <b>SURVEYORS ENGINEERS SINCE 1955</b>          Phone (219) 736-0555 • Fax (219) 769-0178          64 West 67th Place • Merrillville, IN 46410          dplumb@plumbtuckett.com</p>	<p><b>RANDALL MILLER &amp; ASSOCIATES INC.</b>  <i>Surveyors • Engineers • Consultants</i>  <b>Jason Miller, PLS, PE, CFM, President</b>          Professional Land Surveyor Professional Engineer          Certified Floodplain Manager          145 E. Third Street • Marion, IN 46952          jmiller@rmasurveying.com • Office: (765) 662-1284 • Cell: (765) 251-3717  <a href="http://www.RMAsurveying.com">www.RMAsurveying.com</a></p>
<p><b>Schneider</b>    <b>The Schneider Corporation</b>          Historic Fort Harrison          8901 Otis Avenue          Indianapolis, IN 46216-1037          317.826.7132 Direct          866.973.7100 Toll-Free          317.989.2606 Cell Phone          317.826.7110 Fax          rmliller@schneidercorp.com E-mail          www.schneidercorp.com Web          www.beacon.schneider.com Web  <b>Rick Miller, P. S.</b>          Director of Land Surveying          WBE (Women Business Enterprise)          HUB (Historically Underutilized Business)</p>	<p><b>SEA Group, LLC</b>          494 Gradle Drive          Carmel, IN 46032          P: (317) 844-3333          E: jim@seagroupllc.com  <a href="http://www.seagroupllc.com">www.seagroupllc.com</a></p>
<p><b>Sieg &amp; Associates, Inc.</b>          13150 N. Penntown Rd.          Sunman, IN 47041          P: (812) 623-6700          E: ritaseig@seigsurveying.com  <a href="http://www.seigsurveying.com">www.seigsurveying.com</a></p>	<p><b>STOEPPELWERTH</b>          ALWAYS ON    <b>David Stoepfelwerth, P.E., P.L.S.</b> <i>president &amp; ceo</i>          ofc: 317.849.5935 7965 East 106th Street          dir: 317.849.5935 Fishers, IN 46038-2505          mbl: 317.577.3402 www.stoepfelwerth.com          fax: 317.849.5942          dstoepfelwerth@stoepfelwerth.com</p>

<p><b>TBIRD</b>          Design Services Corporation  <b>Engineering and Surveying</b>    <b>John C. Nagy, P.L.S.</b>          105 N. 10th Street          Lafayette, IN 47901          www.tbirddesign.com          Phone: 765-742-1900          Fax: 765-742-1905          Mobile: 765-479-8320          nagy@tbirddesign.com</p>	<p><b>UNITED Consulting</b>            1625 N. Post Road          Indianapolis, IN          46219-1995          Bus. (317) 895-2585          Fax (317) 895-2596          Cell (317) 443-1244          E-mail: timc@ucindy.com          www.ucindy.com  <b>Tim Coomes, P.L.S.</b>          Manager          Survey Department</p>
<p><b>USI consultants</b>          engineers &amp; land surveyors            8415 E. 56th Street, Suite A          Indianapolis, IN 46216          office (317) 544 4996          fax (317) 544 4997          cell (317) 965 9159  <b>Philip D. Beer II, PE, PLS</b>          Vice President          Business Development          pbeer@usiconsultants.com          www.usiconsultants.com</p>	<p><b>Want to see your company here?</b>          Become an ISPLS firm member!          Contact: Brian Lewis, Executive Director,          ISPLS          blewis@ispls.org          (317) 454-8309 ext 185  </p>



# You'll like the way your software works

# New Carlson 2018



## Fair Price

Offered through perpetual licensing with optional upgrades. Check out the savings at [carlsonsw.com/civilsuite](http://carlsonsw.com/civilsuite).

## Free Support

Carlson Software provides free technical support by phone and online.

**Newly released Carlson 2018 has more than 200 new feature improvements.**  
Learn more at [carlsonsw.com/2018](http://carlsonsw.com/2018)

## Full Featured CAD

Powerful, yet flexible automation for all facets of a land development project.

Available for AutoCAD® (versions 2010 to 2018) or with IntelliCAD® 8.3 built-in.

Contact your local  
Carlson representative  
**Tom Peak, P.S. ■ 606-375-2196**  
[tpeak@carlsonsw.com](mailto:tpeak@carlsonsw.com)

Carlson Software Inc.  
33 East 2nd Street  
Maysville, KY 41056, USA  
800-989-5028 ■ [carlsonsw.com](http://carlsonsw.com)

