
HOOSIER SURVEYOR



QUARTERLY PUBLICATION OF THE
INDIANA SOCIETY OF
PROFESSIONAL LAND SURVEYORS, INC.

VOLUME 35
NUMBER 2
FALL 2008



AFFILIATED WITH THE
AMERICAN CONGRESS ON
SURVEYING & MAPPING



DUST STORM IN IRAQ

Pictured here is a view from the driver's seat of a military vehicle in the midst of an Iraqi sand storm in mid-August 2008. Staff Sgt. Ryan A. Selby of the Indiana National Guard 76th Brigade submitted the image.

On page 15 Selby, an ISPLS student member serving his second tour of duty in Iraq, describes in detail the effects of these all too common sand storms that last up to three days.

2008 OFFICERS & DIRECTORS

Mark Isaacs - President
4337 N County Rd 275 W
Browntown, IN 47220
RES: (812) 358-2702 BUS: (812) 372-0996

Todd Bauer - Vice President
3864 Ashford Blvd.
New Haven, IN 46774
RES: (260) 494-6673 BUS: (260) 484-9900

Dan Kovert - President Elect
8193 Fawnsbrook Drive
Fishers, IN 46038
RES: (317) 841-1083 BUS: (317) 577-8204

Rich Hudson - Secretary
574 North 50 West
Valparaiso, IN 46385
RES: (219) 462-2946 BUS: (219) 462-1158

Dennis Grumpp - Treasurer
4244 S 650 W
New Palestine, IN 46163
RES: (317) 861-1844 BUS: (317) 826-7100

TERM EXPIRES JAN 2009
Todd Bauer - Vice President

Steven Murray
1428 East 900 North
Battle Ground, IN 46920
RES: (765) 567-4187 BUS: (765) 423-9228

Ed Sweetland
6793 W. Colonial Drive
Indianapolis, IN 46140
RES: (317) 891-1137 BUS: (317) 544-4996

Jim Tibbett
R.R. 2 Box 240
Linton, IN 47441
RES: (812) 847-3254 BUS: (812) 847-1952

TERM EXPIRES JAN 2010
E. Donald Bengel
73 E. Division Road
Valparaiso, IN 46383
RES: (219) 465-0988 BUS: (219) 462-0690

Rich Hudson - Secretary

Mark Isaacs - President

Ron Wharry
52 W. Clinton Street
Frankfort, IN 46041
RES: (765) 654-5385 BUS: (765) 654-5910

TERM EXPIRES JAN 2011
Frank Ballintyn
2855 Plantation Ct.
Sellersburg, IN 47170
RES: (812) 246-9881 BUS: (812) 294-4306

Perry Cloyd
3906 Sycamore Drive
Columbus, IN 47203
RES: (812) 526-2227 BUS: (812) 526-6209

Dennis Grumpp - Treasurer

Dan Kovert - President Elect

ADMINISTRATIVE OFFICE
Dianne S. Bennett, Executive Director
55 Monument Circle, Suite 719
Indianapolis, IN 46204
(317) 687-8859 Fax: (317) 687-5053
ISPLS is a Not For Profit Corporation

COMMITTEE ASSIGNMENTS (2008)

Prof. Development Administrator:
Todd Bauer

EDUCATION

Brad Cramer - Chair
Bruce Franke
Bryan Catlin
Bill Clark
Harold Hart
Norman Hiselman
Carol Morman
Brian Rayl
John Silnes
William Stine
Anthony Toscani

SCHOLARSHIPS

Troy Smith - Chair
Frank Ballintyn
Lee Bender
Phillip Burress
Cindy Candler
Bernard Guerretaz
Kevin Rowland
Mark Schepers

TRIG STAR

Tony Gregory - State Coordinator

Government Affairs Administrator:
Daniel Kovert

BOARD OF REGISTRATION LIAISON

Ed Sweetland - Chair

COUNTY SURVEYORS

Steve Murray - Liaison

GOVERNOR GREAT LAKES COUNCIL

Don Bengel - Governor
Tony Gregory - Alternate

GPS-GIS MONUMENTATION

Tom Mahon - Chair
Steve Murray
Zach Beasley
Perry Cloyd
Boudewijn van Gelder
James Kovas
Paul Sanders
Michael Stevenson
Ryan Swingley
Ralph Wallem

LEGISLATION

Richard Miller - Chair
Michael Arena
Phil Beer
Michael Duffy
Jason Henderson
Jay Poe
Jud Rouch
Ed Sweetland

Internal Affairs Administrator:
Daniel Kovert

BY LAWS

Don Bengel - Chair
Robert Gross
Rich Hudson
William Stine
Ron Wharry

FINANCE & PLANNING

Dennis Grumpp - Chair
Dianne Bennett-ExDir.
Todd Bauer
Doug Herendeen
Dan Kovert
Ed Sweetland
Rich Hudson
Mark Isaacs
Jim Tibbett

NOMINATIONS

Mark Gardner - Chair
Doug Herendeen
Rich Hudson
Daniel Pusey

Communications Administrator:
Todd Bauer

PUBLICATIONS & MEDIA

David Best - Chair
Mike Davis
Dianne Bennett
Todd Bauer

MEMBERSHIP

Don West - Chair
Jeff Franciski
Daniel Kovert
Ron Wharry

PAST PRESIDENT'S COUNCIL

Perry Cloyd - Chair
Bill Clark
Ed Sweetland
Frank Ballintyn
Open to Past Presidents

PUBLIC INFORMATION & MARKETING

Richard Beaman
Zach Beasley
Jamison Cullen
Rodney Kelly
Don West



ISPLS BOARD OF DIRECTORS (2008)

First row, l to r: Frank Ballintyn, Sellersburg; Richard Hudson, Valparaiso; Ron Wharry, Frankfort; Don Bengel, Valparaiso; Ed Sweetland, Greenfield; Mark Isaacs, Brownstown; Todd Bauer, Leo; Second row., l to r: Jim Tibbett, Linton; Dan Kovert, Fishers; Perry Cloyd, Columbus; Steve Murray, Battle Ground; Dennis Grumpp, New Palestine.

HOOSIER SURVEYOR

VOLUME 35 NUMBER 2 FALL 2008

CONTENTS

| | |
|---|-------|
| Masthead..... | 1 |
| President's Thoughts..... | 2 |
| ISPLS Board of Directors Meeting Highlights..... | 3 |
| Northern Indiana Boy Scouts Introduced to Land Surveying..... | 5-7 |
| Program Schedule 2009 ISPLS Convention..... | 11-12 |
| 2009 Convention Registration Form..... | 13-14 |
| Report From Iraq..... | 15 |
| Spouse/Guest Program Convention..... | 15 |
| 2008-09 Vincennes Surveying Scholarship..... | 17-19 |
| Completed Careers..... | 20-21 |
| Meet A Member..... | 25 |
| Calendar/Sustaining Members/New ISPLS Members..... | 26 |
| Firm Members..... | 27-29 |

EDITORS NOTE

Deadlines for copy for various planned issues of the Hoosier Surveyor are as follows: Winter - December 31; Spring - March 31; Summer - June 30; Fall - September 30.

The Hoosier Surveyor is published quarterly by the Indiana Society of Professional Land Surveyors to inform land surveyors and related professions, government officials, educational institutions, libraries, contractors, suppliers and associated businesses and industries about land surveying affairs.

Articles and columns appearing in this publication do not necessarily reflect the viewpoints of ISPLS or the Hoosier Surveyor staff, but are published as a service to its members, the general public and for the betterment of the surveying profession. No responsibility is assumed for errors, misquotes or deletions as to its contents.

Editorial Advertising Offices
55 Monument Circle, Suite 719
Indianapolis, IN 46204

Phone:(317) 687-8859 Fax: (317) 687-5053

Web Page: www.ispls.org EMail: ISPLS@aol.com

David B. H. Best - Editor
5402 Washington Boulevard
Indianapolis, IN 46220

Phone: (317) 251-5136

E-Mail: dbest@dominiongroup.org

PRESIDENT'S THOUGHTS

by Mark Isaacs, PLS, Brownstown, Indiana



Greetings to everyone:

My favorite time of the year is the fall season. It's a time when the weather is great, the scenery is beautiful, and the leaves are coming down. I hope our economy changes for the better soon. Our office phone is not ringing. We are playing catch up on jobs we'd put on the back burner. We project a workload of a couple months. Conditions in our country are unstable and unpredictable. This

leads people to be uneasy and apprehensive about spending money. However, I know that as Americans we will tough it out.

Our January 2009 ISPLS Convention is just around the corner. Doug Herendeen, the ISPLS office staff, and members of the ISPLS Southwest Chapter are working feverishly to prepare for the convention. I encourage anyone with an interest in or an association with the land surveying profession to attend the convention. This will be an exciting convention with new features added this year including vendor demonstrations, a combined luncheon for all attendees, lively entertainment at the convention banquet, and a Las Vegas Casino night. The educational programs will offer a variety of topics: "The Indiana-Michigan State Line," "Green Development," "The Abraham Lincoln and Land Surveying Museums," "Maximizing Your Resources," and "How to Make a Boundary Determination that will win in Court." Because of the state of our economy it may be easy to forego the convention this year. Therefore, I challenge all ISPLS members to attend the convention to enjoy the fellowship of ISPLS members, to better educate ourselves, and to help develop a strategy to meet the challenges of the coming years. The result will be a stronger and more viable land surveying profession. Another convention feature will be the second annual Purdue University and Vincennes University Alumni Party on Wednesday night.

Recently the ISPLS Board of Directors approved the creation of a not-for-profit Foundation to provide scholarships to students attending Indiana-based schools of higher education. A previous effort by ISPLS to organize a scholarship-oriented foundation was unsuccessful. This newly-formed ISPLS Board of Directors Foundation will be governed by a separate board consisting of members of the ISPLS Board of Directors, members of ISPLS, and members not affiliated with ISPLS. The Foundation will assure continued support by ISPLS of the surveying programs of Purdue University, Vincennes University, the Purdue Calumet campus, the Indiana-Purdue Fort Wayne campus, and other Indiana schools of higher education offering surveying courses. The Foundation will permit ISPLS to continue its funding of existing endowments at Purdue University (the John G. McEntyre Scholarship) and Vincennes University (the Peggy Archer Scholarship) and to provide general scholarships to students in other Indiana colleges and universities. The Foundation is in its initial stages of formation. We welcome input from ISPLS members as the Foundation becomes a viable

entity.

The ISPLS Board of Directors and the Board of Directors of the Michigan Society of Professional Land Surveyors jointly signed a Resolution for the recovery and preservation of the Indiana-Michigan Boundary Line. The purpose of the Resolution is to initiate the legislative process in each state to pass legislation authorizing a re-survey of the Indiana-Michigan Boundary Line. ISPLS members Todd Bauer, Chris Marbach and John McNamara are members of an ad-hoc committee charged with researching information for the survey and assisting ISPLS lobbyist Michael O'Brien in guiding a bill through the Indiana legislature. The legislative process will include attending meetings with Indiana legislators, obtaining commitments from legislators to sponsor the bill, and seeking support from other legislators. The January ISPLS annual convention as noted above includes a session chaired by Norm Caldwell and Jack Owens on the "Indiana-Michigan State Line Survey." We encourage your attendance at this session. My kudos go to all of the people involved in this project. The project is important for several reasons. Surveyors conducting surveys in the vicinity of this line will benefit immeasurably from the re-survey. The re-survey will benefit the land surveying professional in general and ISPLS in particular as a means of educating the citizens of both states of the critical need to preserve all boundary lines.

I offer these final thoughts as your outgoing ISPLS president. My thanks go to ISPLS members for their service on ISPLS committees, for members of the ISPLS Board of Directors and Officers for their consummate efforts on behalf of the Society. JOB WELL DONE!!! ISPLS members responded promptly when asked to do something, completing their assignments in a professional manner. You've made my job look easy. It's been an honor to serve the Society. If asked to serve again at some time in the future, later than sooner, I will consider it a privilege to serve again as the Society's president. The effectiveness of ISPLS becomes more apparent when you serve as its president. In like manner I realize how much more needs to be done. I now know how ISPLS can function even more effectively and how imperative it is that we do all we can to enhance the image of our profession. I challenge past presidents to consider serving another term. We will benefit greatly from your experience. As a member of other organizations I often hear long-time members say, "I've served my time. Now it's time for the younger generation to step up and do something." I understand this response. However, I believe we need a mix of seasoned veterans and younger enthusiastic members to perpetuate a productive Society. My final word is to become involved at some level with ISPLS. You need ISPLS! ISPLS needs you!

Closing Thought: *"If I had eight hours to chop down a tree, I'd spend six hours Sharpening my ax"* – Abraham Lincoln

"I like to see a man proud of the place in which he lives. I like to see a man live so that his place will be proud of him." – Abraham Lincoln

Mark R. Isaacs, PLS

ISPLS BOARD OF DIRECTORS MEETING HIGHLIGHTS

by Dianne Bennett, Executive Director

June 21, 2008

The ISPLS Board of Directors met on Saturday, June 21, 2008 at Vincennes University. President Mark Isaacs called the meeting to order at 9:25 a.m. The minutes and treasurer's report were reviewed and approved as amended.

Staff Activity Report - A written report was submitted for review.

Communication - Publication - Hoosier Surveyor - Deadline for the Summer issue is July 15th. The Hoosier Surveyor will be available to members via on-line access only and mailed to representative and other select individuals.

Membership - The annual membership renewals were mailed out June 2nd.

Education - The education committee recommended the seminar "Indiana Easements and Rights of Way" presented by Gary Kent for 7 CEH Elective on August 22, 2008. A motion was made and passed to accept the Education committee's recommendation.

The "Mock Trial" seminar held on May 9, 2009 had 66 people registered. The income/expenses were provided to the board.

Scholarship - ISPLS and numerous chapters have awarded scholarships to land surveying students.

GPS-GIS Monumentation - A meeting was held Tuesday, July 17, 2008.

Legislation - There has been limited activity since the last board meeting. Plans are to set up a meeting with PLA.

Nominations - The President Elect slate has been set and the committee will be working on establishing a slate for the upcoming Board of Directors nominations.

Chapter Reports - Northeast - Their next meeting is June 25, 2008 with a demonstration on the Trimble VRS Network. The annual golf outing will be August 8, 2008.

Central Indiana - The chapter met April 20th and awarded scholarships to students in land surveying. The chapter members worked with the local boy scouts helping them to gain their Surveying Merit Badge. CIC had their initial Carb Day outing with several members attending.

Hoosier Hills - The chapter had a work day at the New Song Mission in May and plans to return later this month to provide additional services.

Initial Point - The chapter will hold a meeting June 25, 2008 to review scholarships and perform chapter business.

Southwest - The chapter met in April with a special guest from NSPS. Ryan Swingley made a presentation on surveying technology using Google Earth. The chapter awarded two scholarships for next year and are working through their committee on the 2009 State Convention.

St. Joe - A written report was submitted. Their last meeting was May 22, 2008. The meeting was held at the offices of Williams Aerial and Mapping in South Bend. The guest speaker was Jim Moffitt, CP Photogrammetry Manager. Jim presented some basic aspects of photogrammetry, his operations, new technologies and a tour of the WAM facilities.

Old Business - The Vincennes University Advisory Report forms, function and content was discussed. A motion was made and passed to accept the Vincennes University Advisory Report.

The Indiana/Michigan State Line - A brief update was presented on the efforts made by both Indiana and Michigan regarding the establishment of the State line and their efforts in pursuing legislative funding regarding the same.

Indianapolis Motor Speedway Track Day - The board discussed the costs for ISPLS to sponsor a day at the track at the Indianapolis Motor Speedway upcoming race events.

New Business - NSPS Foundation Disaster Relief Fund - With the recent flooding in the Midwest, the foundation will provide assistance to surveyors.

ISPLS Golf Outing - Discussed was an ISPLS regional golf outing and social functions.

Coalition of Geospatial Organization - Information was provided regarding the Coalition of Geospatial Organizations.

ISPLS Foundation - A brief update on the status of the ISPLS Foundation established at the May 17th, 2008 board meeting was presented.

August 9, 2008

The ISPLS Board of Directors met on Saturday, August 9, 2008 at ISPLS headquarters. President Mark Isaacs called the meeting to order at 9:15 a.m. The minutes and treasurer's report were reviewed and approved.

Adjustments to the Agenda - Indiana Michigan State Line - The BOD was updated on the project. The main goal of the two groups is to pursue each state's legislators to fund the remonumentation of the Indiana-Michigan state line. A motion was made and passed to sign the resolution agreement. The document states that ISPLS will support the program as prepared by MSPS.

Staff Activity Report - A written report was submitted for review.

Communication - Publication - The summer issue went to the printer on Monday, August 4th. Hard copies will be sent to Representative, Sustaining member and other state editors only. The Hoosier Surveyor is available to members on line.

Membership - The BOD reviewed and approved the membership applications submitted by the membership committee.

Education - The BOD approved the education committee's recommendation to approve the seminar by Gary Kent, "Indiana Easements and Rights of Way" scheduled for August 2008 for 7 CEH Elective.

Internal Affairs - Todd Bauer and Jim Tibbett will be the nominees for the 2009 President-Elect.

Old Business - Golf Outing - A motion was made and passed to add items I-33 Income and G-109 Expense to cover golf outing income/expense.

New Business - The Indiana Historical Landmarks has been disbanded. They have divided funds from the group and have dispersed funds to four organizations. \$2000 was donated to ISPLS. A motion was made and passed to move the \$2000 to miscellaneous funds.

ISPLS Foundation - A brief update was presented.

Funeral Card - A motion was made and passed to create a memorial letter to be mailed to the family members of our deceased members.



Positioning Solutions Company

Your source for site productivity tools



**Total Stations
Lasers
GPS**

**Machine Control
Supplies**

**Sales
Service
Rental
Training**



Positioning Solutions Co. | Productivity Tools for Survey and Construction Professionals

7522 E. 39th Street, Indianapolis, IN 46226

Phone: 888-313-6111 | Fax: 317-542-7784 | www.1psc.com

Northern Indiana Boy Scouts Introduced to Land Surveying

by Mike Davis, Indianapolis

Five Northern Indiana Boy Scouts were introduced to land surveying at an October camping and advancement camporee in South Bend — and with the help of two St. Joseph Valley Chapter members, were well on their way toward earning their surveying merit badges by the end of a 3½-hour session.

“We completed five of the eight requirements,” said Jim Lietzan, PLS, of Mishawaka, who worked with Aaron Blank, PLS, also of Mishawaka, to offer the workshop. “The Scouts need to create a plat, write a legal description and go to the courthouse and get a copy of a deed to complete the merit badge.”

Less than two weeks later, Lietzan had received legal descriptions and plats from two of the Scouts, and he was planning to contact the other three and offer guidance as needed to help them reach their goal.

“We had a great time working with the Scouts and plan on more surveying merit badge clinics in the future and encourage other surveyors and local chapters to get involved,” said Lietzan, who is secretary of the St. Joseph Valley Chapter of ISPLS.

Blank, who is president of the chapter, said this was the first time he had the opportunity to educate young people at such a basic level about surveying.

“I have been involved with a couple of classroom-type presentations before but was never able to have time to allow the students to ‘get their boots muddy,’ ” he said.

“Due to time constraints, the classroom-type discussion does not allow for the students to work a surveying problem through to reach a solution and usually focuses on surveying theory and history.

“Jim and I had the opportunity (at the camporee) to run the Scouts through some paces with instrument set-up, turning angles, measuring distances, reading a level rod, and note-taking for all of those activities.”

Though both had experience making presentations to Cub Scout Webelos dens, their interest in a surveying merit badge clinic got a big boost at a meeting before the January 2007 ISPLS convention. It produced commitments to offer surveying merit badge sessions at locations in the northern, central and southern parts of the state.

Lietzan said planning for the Boy Scouts’ 2008 Algonquin District Fall Camp-O-Ree had already begun before the ISPLS preconvention meeting. The surveying merit badge was added at a Scout committee meeting in February.

“Members of the district committee could not remember the last time the surveying merit badge had been offered,” he said.

A request for volunteers to help with the clinic was made at a St. Joseph Valley Chapter meeting later that month, and there was enough interest to proceed with the planning. The chapter also received assistance from three firms: Abonmarche, DLZ and Positioning Solutions.

When camporee plans were finalized, surveying was one of six merit badges to be offered, joining aviation, engineering, family life, personal fitness and personal management.

Surveying was one of those requiring advance work for those who registered. The Scouts were required to get a copy of the deed to their family’s property, or a piece of property assigned by a merit badge counselor, from the courthouse or a title agency.

Just one Scout signed up in advance, however, and when he didn’t show up, Lietzan did some promoting at a morning session to encourage others to take part in the afternoon.

“The promoting helped,” he said. “Three of the Scouts completed the engineering merit badge in the morning and were told by the counselor how surveying and engineering work together and decided to take the surveying session on the spot.”

The Scouts were Matt Lewis, Darien Mattix and Charles Yoho of Troop 215; and Matt Chambers and Thomas Membrila of Troop 321.

“The merit badge program exposes the Scouts to what surveying entails at a hands-on level that exceeds most other education programs,” Blank said. “The Scout merit badge counselor program would be a great addition to the arsenal of activities that ISPLS supports for community and educational outreach.

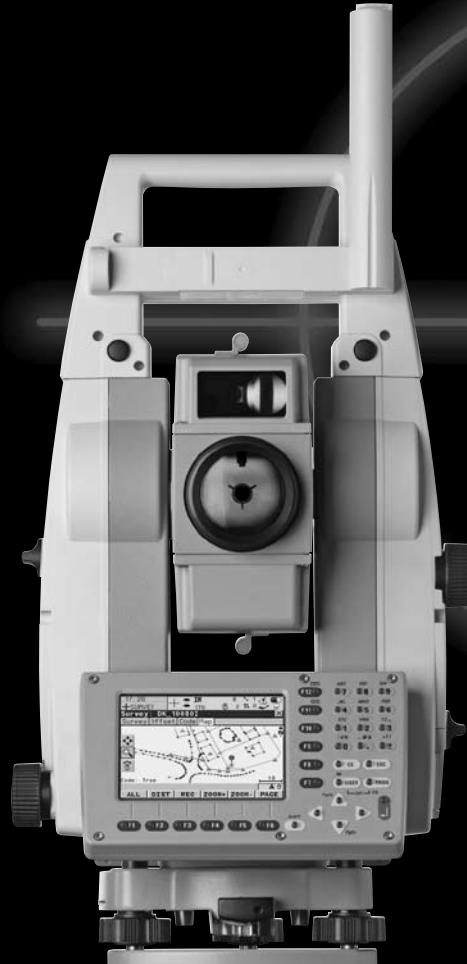
“The boys had a good time . . . and the Scouts did too.”



St. Joseph Valley Chapter member Aaron Blank, PLS, gives instruction on leveling through traverse points to Scouts (from left) Matt Lewis, Charles Yoho and Darien Mattix during the Oct. 3-5 Algonquin District Fall Camp-O-Ree at ZB Falcons Conservation Club in South Bend.

More Pictures Page 7

Meet the Newest Member of the Leica System 1200 Family



Here is what the **+** means:

- +** Greater range of reflectorless EDM – up to 3,280 feet
- +** Accuracy to reflectors ± 1 mm + 2 ppm up to 9,840 feet
- +** High-resolution color display
- +** Faster lock features

Visit www.leica.com/bigplus
or call 1-800-367-9453 for more information

Advanced Lasers and Instruments
Indianapolis, IN • 800-622-4905
Evansville, IN • 812-867-1286
Fort Wayne, IN • 260-483-2173
Louisville, IN • 812-282-1800

For exciting career opportunities with a growing global industry leader,
submit your resume to: human.resources@leica.com

Introducing Leica TPS1200+, the fastest one-person total station in the world

Leica TPS1200+ is, without a doubt, the most comprehensive, everyday-use instrument available in the market. Whether you're doing land surveying, bridge monitoring, or construction, the performance provides your team with a big plus. This new family member pulls its own weight in every configuration. Robotic and manual versions guarantee you have the right tool for your job.

Take one out for a spin with your local Leica Geosystems representative today, or visit us online at www.leica.com/bigplus to view ALL the specs.

Products you rely on ■ Service you count on ■ People you trust

- when it has to be right

Leica
Geosystems



Giving a backsight for a five-sided traverse that is one of the eight surveying merit badge requirements is Scout Matt Chambers.



Scout Darien Mattix receives pointers from merit badge counselor Aaron Blank, PLS, on how to focus the level on the rod held just out of the photo by fellow Scout Matt Lewis.



Gathering for a group photo after the surveying merit badge clinic at the Boy Scout Algonquin District Fall Camp-O-See in South Bend are (front row, from left) Scouts Thomas Membrila, Matt Lewis, Darien Mattix, Charles Yoho, and Matt Chambers; and (back row) merit badge counselors and ISPLS members Jim Lietzan, PLS and Aaron Blank, PLS.

THE TOTAL PACKAGE

What happens when you combine Topcon, the industry leader in innovative technology, with Hayes Instrument Company's unprecedented support, value pricing, and in-house financing? You get a solid solution to all of your equipment and technology needs.



TOPCON GTS-236W

- Bluetooth Wireless technology
- Extra wide, extra visible display
- Up to 9,900ft distance measurement (3,000m)

per month: **\$135.90**



FC-100 W/ TOPSURV 7

- Field Computer & Controller
- Bluetooth™ Compatible
- Easy Access Compact Flash / SD

per month **\$43.20**



BANTAM RADIOS

The BanTam Rod Control setup allows you to operate the datacollector from the prism pole, giving you true control in the field.

per month **\$40.00**



MAGNATRAC 200

Instrument control panel features LCD visual display and water-repellent push button switch operation. Seven year warranty.

per month **\$15.00**



TOPCON TP-5

Heavy duty wood tripod with quick clamps, large round head & replaceable points.

per month **\$3.40**



UNIVERSAL PRISM

Single tilting prism assembly with metal yoke and plastic target. -30mm or zero prism constant.

per month **\$3.20**



CST QUICK-LOK

Steel point, dual graduations, metric and tenths.

per month **\$2.25**

Total 'Worry-Free' mo. payments: **\$242.95**



"What attracted me to Hayes at first was the 'Worry-Free' Lease because it fit so well into my business plan. It allowed me to get the equipment that I needed to start my business, without expending my entire budget. One of the most important parts of any business plan is the exit strategy. The 'Worry-Free' Lease allowed me to return the equipment with no further obligation if need be. As I grew, I learned the most important part of the lease is that I could trade up to better technology, without the obligation of making payments on equipment that I wasn't using.

Advancing technology is at the heart of my business plan. It allows me to compete directly on projects in ways that weren't possible 8 or 10 years ago. It takes a lot of effort to stay on the leading edge and it takes support as well. Hands down, Hayes has the best technical support that I have ever used. They know their equipment and they know their software.

When I need an answer, I need it now. I'm not real interested in excuses, and I don't appreciate the line: 'Johnny is busy right now and maybe he can call you back tomorrow.' If I tell my clients that maybe I can meet their schedule, I'm reasonably certain they will tell me that maybe they can get someone else. Hayes understands that and they

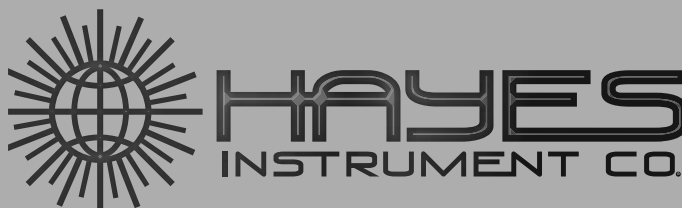
have always given me straight answers to every question I've asked. Sometimes the answer is yes and sometimes the answer is no, but my clients get the truth from me and that's what I get from Hayes.

There will always be logistical issues in surveying. The one thing I haven't learned to do is to be in two places at once, but I am working very hard on learning how to do that. Hayes in Tennessee and me in Florida has never been an issue. The truth of the matter is that with overnight deliveries, the internet, email, FTP access and the telephone we can all do business with just about anyone we want.

I'm a Consulting Surveyor and I wouldn't have it any other way. Things change and my business will change right along with them. The keys are motivation, support and always remembering that the harder we work, the more luck we have."

DANIEL GALBRAITH, PSM, PLS
GULF SURVEYORS GROUP, INC.
www.gulfsurveyors.com

Dan specializes in surveying, GPS and robotics training, 3D modeling and data prep for machine control.

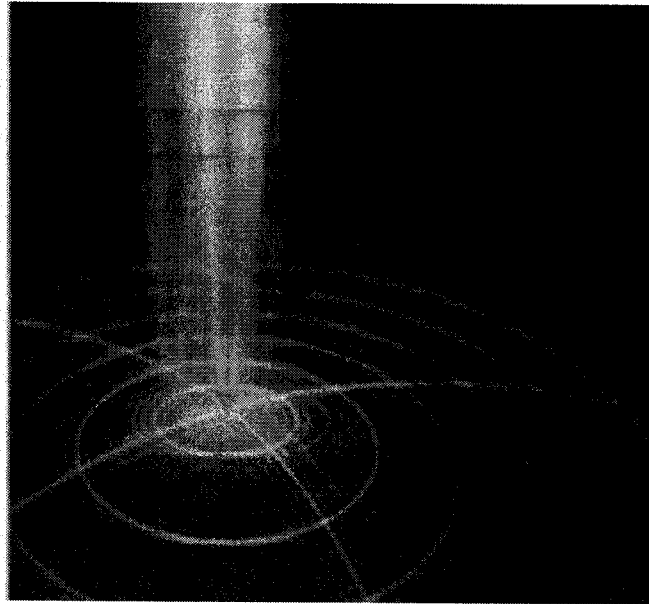


GO **WILD** for *Leica*
HEERBRUGG

Accuracy, Precision
Your reputation depends on it.

Speed, Performance
Your survival depends on it.

**When INDOT went shopping
for a GNSS Reference Station
Network, they bought Leica.**



Users of GNSS Reference Station Networks expect their results to be consistent throughout the complete Network, but often they're unaware that virtually computed Reference Stations compromise consistency. Now with Leica Geosystems SmartRTK and RTCM 3.1 correction data, consistency is guaranteed.

SmartRTK does not only provide benefits in RTCM3.1, the new atmospheric decorrelator technology provides precise positioning in all Networks regardless of the correction data. You are always in focus with Leica Geosystems SmartRTK with RTCM3.1.

The new RTCM3.1 international standard now includes correction data designed by Leica Geosystems to ensure that the results are consistent and traceable throughout the network.

The new INDOT GNSS Reference Station Network was supplied by:

ADVANCED SURVEY SOLUTIONS LLC

2220 N. Franklin Road
Indianapolis, IN 46219

(317)356-9800

Fax: (317)351-7038

Autodesk Technology. Avatech Expertise.

Better Results.

- Consulting
- Implementation
- Surveying Technologies
- Training and Technical Support
- Software and Custom Development



Technology for the World You Build

- Increase production without additional staff
- Reduce cost, rework, redundancies, and errors
- Proven results to increase your bottom line

What can our solutions do for you?

Call our Indianapolis office at **317-846-2900** to find out more.

Leica
Geosystems



AVATECH
SOLUTIONS®

Altogether Smarter Design.

Autodesk®
Authorized Value Added Reseller

www.avatech.com

PROGRAM SCHEDULE 2009 ISPLS CONVENTION

Indianapolis Marriott East, Indianapolis, IN (January 14-16, 2009)

Wednesday, January 14, 2009

“Rules of Professional Conduct & The Complaint Process”

Ross Holloway/Mike DeBoy (3 CEH Mandatory)

This session will review Rules of Professional Conduct, 865 IAC (Rule 10). Each subsection, 1 through 24, will be discussed with examples given to illustrate the particular ethical concern and the ramification to the public and professional when ethics are compromised. Presenter will encourage those attending to provide their own examples of ethical situations and will address possible acceptable resolution under Rule 10.

“Retracement Survey Indiana/Michigan State Line”

Norm Caldwell/Jack Owens (3 CEH Elective)

The attendees will be made aware of the history of the line, how it relates to the current retracement (survey) of the line, and what is needed and is being planned to finish retracement (survey and monumentation) of the state line.

“Green Development “ Dave Kovich (3 CEH Elective)

This seminar will discuss the rules and processes of developing green. David Kovich is a builder & developer from Lafayette, Indiana with over 30 years experience in the construction industry. He is a Certified Green professional (CGP) designation holder.

“ The Lincoln & Surveying Museums -Abraham Lincoln-The Man-The Boy” Bob Church (3 CEH Elective)

The attendees will be informed about the 155 million dollar Abraham Lincoln Presidential Library and Museum. They will also be informed about the construction of the National Museum of Surveying and its planned opening during Lincoln's 200th Birthday celebration of 2009. The attendees will be informed of Lincoln's life as a Deputy Sangmon County Surveyor 1833-1837 and how it influenced his career as an attorney and how it started his political careers, which led him to become the President of the United States.

Thursday, January 15, 2009

“GIS and the Surveyor”

Janet Jackson/Randy Rambeau (3 CEH Elective)

Ever wonder why some folks seem to intersect and others don't? This half-day workshop will help you fine-tune your intersecting abilities by showing you tips and tricks to overcome the challenges and potential pitfalls you probably face every day in your professional work.

Learn to speak the same language, present a united front, cross-sell like a pro and reap the benefits that Intersecting can bring to your clients and your company. GIS Janet and Surveyor Randy have been successfully Intersecting for years, and welcome the opportunity to share their stories and solutions with you.

“Property Rights and the PLS” Jeff Lucas (6 CEH Mandatory)

The attendees will learn basic property rights, how property

rights can affect the land surveyor's practices. They will learn torts that the land surveyor can commit during the course of conducting a survey of property. You will learn how the courts deal with property rights and the effect property rights have on surveys. Also you will learn at least one fundamental court case dealing with issue of property rights and the land surveyor. (Intended Audience's Experience Level: Intermediate to Advanced Level)

“Resolving Conflicts of Evidence”

Donald Wilson (6 CEH Mandatory)

This is a one-day presentation analyzing types of conflicts of evidence, and a discussion of rules for the resolution of those conflicts. Included are conflicts between documentary, physical and parol evidence, and the effect of occupation and possession independent of record title.

“Writing and Interpreting Legal Descriptions”

Anthony Gregory (3 CEH Mandatory)

This course will review the fundamental principles associated with writing and interpreting legal descriptions. Applying theory of location to the writing of or interpretation of legal descriptions will be discussed. Major topics covered will include: legal description fundamentals, types of legal descriptions, conflicting title elements, interpreting legal descriptions and writing legal descriptions.

“Preparing Surveyor Reports” Rick Miller (3 CEH Mandatory)

This seminar is designed to familiarize attendees of the responsibilities, in accordance with 865 IAC 1-12-12, of the Indiana registered land surveyor relative to the preparation and publication of a surveyor's report regarding the matters of survey discovered during their performance of an original, retracement or route survey. This seminar is designed to provide attendees with a greater understanding of the essential content of the surveyor's report and to equip them with the knowledge and tools to aid them in preparing a concise, yet easy to understand, report that will inform their clients and other professional surveyors of the theory of location applied in establishing or retracing the lines and corners of the surveyed parcel, and provides the registered land surveyor's professional opinion of the cause and the amount of uncertainty associated with those lines and corners. This seminar will include audience reviews and critiques of sample surveyor reports and follow up with audience participation to redraft those sample reports which may serve to hone the participant's own report writing skills.

“Managing A Successful Surveying Business: A Personal Perspective “ John Fenn, Sr. (3 CEH Elective)

The speaker will relate to the audience his trials in the survey business, what has worked for him and why, and what hasn't worked and why. Every attendee will learn and benefit from his knowledge, experience and advice; whether their company is relatively new or has been in existence for a period of time. Attendees will benefit from the presenter's lifetime experience.

...continued Page 12

Program Schedule

...continued from Page 11

“Safety for the Small or New Surveying Firm plus a Critical Update on FHWA Surveying Requirements”

Ron Koons (3 CEH Elective)

This seminar will be geared toward the small and new surveying firm, but there will be something for everyone. If you are just starting out in business or have yet to develop a safety plan this is for you. We will also cover the changes that just became effective for the FHWA and for anyone who works on a federally funded highway.

Everyone will leave with an understanding of what safety requirements are imposed by federal and state agencies and how to deal with compliance issues. A special section will provide information on the FHWA High Visibility Requirements.

Friday, January 16, 2009

“ALTA Surveys” Scott Wallace (3 CEH Mandatory)

This course gives the surveyor a good understanding on what they can do in the field to meet ALTA mathematical requirements. To that end, basic least squares principles, network geometry, observation types and redundancy will be discussed. Several sample survey projects will be examined using COLUMBUS Network Adjustment Software.

“Title Issues in Indiana Law: Legal Surveys, Rights of Way, and ALTA/ACSM Land Title Surveys”

Gary Kent/Wendy Gibbons (6 CEH Mandatory)

Indiana’s statutory process for a “Legal Survey” has been codified in Indiana law in similar form since the mid 1800’s. Exactly what makes a survey a Legal Survey? How does a Legal Survey affect title to the surveyed real estate and its adjoining? Rights of way affect virtually every tract in the state in one way or another. How were they created? How are they created in 2009? What constitutes a dedication and what is the net result? What about fee acquisitions of right of way? Finally, an ALTA/ACSM Land title Survey represents the “coming together” of the title industry and the surveying profession with a common purpose. What is that? How is an ALTA/ACSM Land Title Survey used by the title industry and why should surveyors know about that? During this session we will explore these issues from the side of the Title Industry and from the perspective of the Land Surveyors.

“How to Make a Boundary Determination That Will Win In Court” Jeff Lucas (3 CEH Mandatory)

In this course ample case laws will be studied to flush out the concepts and principles involved. The conveyance of real property will be discussed. Torts that the land surveyor needs to be aware of will be studied. Unwritten rights in real property will be considered. Additional considerations of the land surveyor, such as real property title, and the three broad scenarios facing the boundary surveyor. Two case studies will be examined.

“Boundaries Established by Actions of Parties”

Donald Wilson (3 CEH Elective)

The attendees will learn how boundaries become established;

the rules of law pertaining thereto; and the evidence necessary to support the actions. Certain activities by individuals or groups may result in the acquisition of title, rights or interests. Several case studies are used for illustration.

Technician/Technical Program

Thursday, January 15, 2009

Civil 3D/ Survey “Clicks to Bricks Tour” Craig Williams/Pat Stack/Matt Davis (3 CEH Elective)

This session will feature “Field to Finish Productivity with Trimble and Civil3D.”

“New Technologies and Solutions for the Civil/Survey Industry” Harry Ward, Carlson Software (3 CEH Elective)

This course identifies some of the new technologies surrounding our business and examines the flux affecting us as we perform our jobs. Parts of our workflow are being altered and diminished, while other components are flourishing but are in desperate need of nourishment. Discussed will be issues, challenges, solutions and a plan to take advantage of opportunities.

Friday, January 16, 2009

“Maximizing Your Resources” - Fred Moser/Jerry Bickner/Jeremy Pooler (3 CEH Elective)

This course will explain how the latest technology (imagery & scanning) is used in the land surveyor’s world including what new business opportunities are available. Also we will discuss what the land surveyor can do to still find available revenue in a construction staking environment that the construction companies themselves are doing more of that work. Finally we’ll discuss the growing trend of GPS Networks and how your business can take advantage of them.

“Investing In Your Future” - Shawna Ballard (1.5 CEH Elective)

This seminar discusses the need to save for retirement, figuring out how much you will need, the basics of investing and the different savings options available. Diversification, compounding, investment mix and the importance of staying invested will be discussed. There will be an overview of retirement plans, IRA’s and Roth IRA’s.

“Rule 2 - Qualifications for Examination - Current Requirements Effective 2009” John Stephens/Richard Hudson (1.5 CEH Mandatory)

The attendees will be introduced to the statute law and administrative code rules that mandate the requirements for licensure. The current Indiana Administrative Code will be reviewed regarding the changes that are currently in effect in 2009. The review will include particular courses that meet the education requirements, a general review of the work experience required for admission for examination, and the application process for both L.S.I.T. and L.S. examinations. Together, the group will discuss the necessary requirements and develop their particular path to obtain licensure.

CONVENTION REGISTRATION FORM

Wednesday, January 14, 2009

- 8:00 - 12:00 p.m. Board of Directors Meeting (Patriot Ballroom)
- 12:00 - 7:00 p.m. ****Registration** Atrium****
- 1:00 - 4:00 p.m. Rules of Professional Conduct & The Complaint Process
Ross Holloway/Mike Deboy (3 CEH Mandatory)
- 1:00 - 4:00 p.m. Retracement Survey Indiana/Michigan State Line
Norm Caldwell/Jack Owens (3 CEH Elective)
- 1:00 - 4:00 p.m. Green Development
Dave Kovich (3 CEH Elective)
- 1:00 - 4:00 p.m. The Lincoln & Surveying Museums- Abraham Lincoln
The Man-The Boy
Bob Church (3 CEH Elective)
- 1:00 - 6:00 p.m. Exhibit Hall Open (Grand Ballroom)
- 4:00 - 6:00 p.m. Exhibitor Reception (Exhibit Hall Grand Ballroom)
- 6:00 - 8:00 p.m. Vincennes and Purdue Alumni and Friends Reunion
(Veteran's Hall 4 & 5)
- 7:00 - 10:00 p.m. Las Vegas Casino Party (Indianapolis Ballroom A-C)

Thursday, January 15, 2009

All seminars will be pre-registered. Classroom space may be limited. Please indicate first choice (✓) and alternate (A). NOTE: Seminars must be attended in full to receive CEH credit. **Registration in a seminar that is a Part 1 of 2 automatically registers you in Part 2.**

- 7:00 - 5:00 p.m. ****Registration** Atrium****
- 7:00 - 5:00 p.m. Exhibit Hall Open (Grand Ballroom)
- 7:00 - 8:00 p.m. PAC Breakfast (Veteran's Hall #5)
- 8:00 - 11:00 a.m. GIS and the Surveyor
Janet Jackson/Randy Rambeau (3 CEH Elective)
- 8:15 - 11:15 a.m. Writing & Interpreting Legal Descriptions
Anthony Gregory (3 CEH Mandatory)
- 8:15 - 11:15 a.m. Managing A Successful Surveying Business: A Personal Perspective
John Fenn, Sr. (3 CEH Elective)
- 8:30 - 11:30 a.m. Resolving Conflicts of Evidence
Donald Wilson (Part 1 of 2) (6 CEH Mandatory)
- 8:30 - 11:30 a.m. Property Rights and the PLS
Jeff Lucas (Part 1 of 2) (6 CEH Mandatory)
- 11:00 - 12:30 p.m. Lunch (staggered start & finish) (Liberty Hall)
- 12:15 - 3:15 p.m. GIS and the Surveyor (Repeat)
Janet Jackson/Randy Rambeau (3 CEH Elective)
- 12:45 - 3:45 p.m. Property Rights and the PLS
Jeff Lucas (Part 2 of 2)

- 12:45 - 3:45 p.m. Resolving Conflicts of Evidence
Donald Wilson (Part 2 of 2)
- 1:00 - 4:00 p.m. Preparing Surveyor Reports
Rick Miller (3 CEH Mandatory)
- 1:00 - 4:00 p.m. Safety for the Small or New Surveying Firm plus a
Critical Update on FHWA Surveying Requirements
Ronald Koons (3 CEH Elective)
- 4:00 - 5:30 p.m. ISPLS Business Meeting (Veteran's Hall 1)
- 6:00 p.m. Social & Banquet (Liberty Ballroom)
Jeff Havens (Entertainment)

Friday, January 16, 2009

All seminars will be pre-registered. Classroom space may be limited. Please indicate first choice (✓) and alternate (A). NOTE: Seminars must be attended in full to receive CEH credit. **Registration in a seminar that is a Part 1 of 2 automatically registers you in Part 2.**

- 7:00 - 12:00 p.m. ****Registration** Atrium****
- 7:00 - 9:00 a.m. Exhibit Hall Closes at 9:00 a.m.
- 7:00 - 8:00 a.m. Past Presidents Breakfast (WilkieRoom)
- 8:45 - 11:45 a.m. ALTA Surveys
Scott Wallace (3 CEH Mandatory)
- 8:45 - 11:45 a.m. Title Issues in Indiana Law: Legal Surveys, Rights of
Way, and ALTA/ACSM Land Title Surveys (Part 1 of 2)
Gary Kent/Wendy Gibbons (6 CEH Mandatory)
- 8:45 - 11:45 a.m. How to Make a Boundary Determination That Will
Win In Court Jeff Lucas (3 CEH Mandatory)
- 8:45 - 11:45 a.m. Boundaries Established by Actions of Parties
Donald Wilson (3 CEH Elective)
- 11:30 - 1:00 p.m. Lunch (Together Liberty Hall)
- 1:00 - 4:00 p.m. ALTA Surveys (Repeat)
Scott Wallace (3 CEH Mandatory)
- 1:00 - 4:00 p.m. Title Issues in Indiana Law: Legal Surveys, Rights of
Way, and ALTA/ACSM Land Title Surveys (Part 2 of 2)
- 1:00 - 4:00 p.m. How to Make a Boundary Determination That Will
Win in Court Jeff Lucas (3 CEH Mandatory) (Repeat)
- 1:00 - 4:00 p.m. Boundaries Established by Actions of Parties
Donald Wilson (3 CEH Elective) (Repeat)

Technician/Technical Program

Participants signed up for the Technician/Technical Program are not eligible to attend the other convention sessions. If you wish to attend the other sessions you must pay the full or 1 day convention fee. If you are a licensed land surveyor and wish to attend the Technician/Technical program for credit you must pay the full or 1 day convention fee. The Technician/Technical Program fee includes meetings, handouts and luncheons only.

...continued Page 14

Technician/Technical Program Cont'd

Thursday, January 15, 2009

8:00 - 11:00 a.m. Civil 3D/ Survey "Clicks to Bricks Tour"
Seiler-Craig Williams/ Pat Stack/Matt Davis
(3 CEH Elective)

11:00 - 12:15 p.m. Lunch - Liberty Hall

1:00 - 4:00 P.M. New Technologies and Solutions for the Civil/
Survey Industry
Carlson Software - Harry Ward (3 CEH Elective)

Friday, January 16, 2009

8:30 - 11:30 a.m. Maximizing Your Resources
Fred Moser/Jerry Bickner/Jeremy Pooler
Positioning Solutions (3 CEH Elective)

11:30 - 1:00 p.m. Lunch - Liberty Hall

1:00 - 2:15 p.m. Investing In Your Future
Shawna Ballard (1.5 CEH Elective)

2:45 - 4:00 p.m. Rule 2-Qualifications for Examination-Current
Requirements Effective 2009
Rich Hudson/John Stephens (1.5 CEH Mandatory)

LODGING

Indianapolis Marriott East Hotel
7202 East 21st Street, Indianapolis, IN 46219
Reservations: (800) 228-9290 or (317) 352-1231

Convention rates (below) have been arranged. **Please indicate you are attending the 2009 ISPLS Convention when making reservations.** Reservations must be received by 12/31/08 in order to guarantee room and availability.

Single: \$ 109.00 Double: \$ 109.00
Triple: \$ 109.00 Quad: \$ 109.00

Registration received after 12/31/08 (including walk-in's) will include a **\$50.00 late fee**, and will be accepted based on available space, and will not be guaranteed handouts or meals. Refund requests received before 1/04/09 a 50% discount will be made. After 1/04/09, no refunds will be made.

No further Registration will be accepted after 1/02/09
After 1/02/09 registration will be at the door with availability of seating.

The **full time registration** fee for the convention includes all handouts, refreshment breaks, two luncheons and the banquet. The registration fee for **spouses** include a like number of meals. The **student** (full time) registration fee includes meetings and luncheons only. **One-day** registrant fee includes handouts and luncheons for the day registered.

The **technician/technical program** fee includes technician/technical meetings, technician/technical handouts and luncheons only. Participants signed up for the technician/technical program are not eligible to attend the other convention sessions. If you wish to attend the other sessions you must pay the full or 1 day convention fee.

As a reminder indicate your first choice with and (✓) and an Alternate (A).

We will appreciate it, that you will indicate a (✓), if you plan on attending the Banquet on Thursday Night.

The Better Half of the Tecumseh Chapter of ISPLS will once again be having its Silent Auction for the Margaret Cunningham Scholarship Fund.

Mail to: **ISPLS**
55 Monument Circle, Suite 719
Indianapolis, IN 46204
Phone: 317-687-8859 Fax: 317-687-5053

Name: _____

Name to be printed on badge: _____

LS Number: _____

Firm Name: _____

Address: _____

City, State: _____

Zip Code: _____ Phone: _____

Spouse Name: _____

SINGLE REGISTRANT & SPOUSE FORM

For additional registrants please make copies of this form.

- Member \$330.00
- Non-Member \$675.00
- Spouse \$145.00
- Student (Full Time) \$ 40.00
- 1 Day (Member) \$240.00
- 1 Day (Non-Member) \$550.00
- 1 Day Technician/Technical Program \$ 75.00
- 2 Day Technician/Technical Program \$150.00
- Late Fee (After 12/31/08) \$ 50.00
- ACSM/NSPS Member (Full Convention) \$330.00
- ACSM/NSPS Member (One Day) \$240.00
- Extra Banquet Ticket (Thursday Night) \$ 50.00

ACSM/NSPS Member-Membership #: _____

TOTAL _____

ISPLS Firm Member - Deduct 20% _____

TOTAL AMOUNT ENCLOSED _____

Method of Payment

_____ Check (Please make check payable to ISPLS)
_____ VISA _____ Master Card

Account Number: _____

Expiration Date: _____

Printed Name: _____

Signature : _____

REPORT FROM IRAQ

By Staff Sgt. Ryan A. Selby, Indiana National Guard

Note: The following is an update as of August 13, 2008 of Staff Sgt. Ryan A. Selby's second tour of duty in Iraq with the Indiana National Guard 76th Brigade. He will be returning to his home in Washington, Indiana in February 2009. He will return to Vincennes University to complete his work on a degree in land surveying.

First of all the weather. It's been an interesting year weatherwise. Long time civilian contractors in Iraq have told me it's been worse than in previous years. Highs last month averaged in the 100-115 degree range. For the last several months there have been no daytime highs below 100 degrees. The nights are starting to cool down now. The overall temperatures are declining. We've been operating

on a night shift for the past three to four months. Therefore, we're not affected by the daytime temperatures because we're in our air-conditioned units. Sand storms are the critical thing. We average at least one dust/sand storm a week. It kicks up late in the afternoon and runs through the night. The dust in the barrack hallways is so heavy fire alarms are set off. The dust will last from a few hours to as much as three days.

Our direct contact with the Iraqi people is minimal. We drive from base to base with resupply convoys. Our lengthy convoys stretching as long as five kilometers while moving seldom stop along the way. The most interaction we have with the Iraqi people are waves from the children and adults as we drive through a village or town.

We're lucky with the entertainment provided us. Our living quarters are in a former Iraqi Air Force Academy barracks. Most rooms have TVs with the ten channels of the Armed Forces Network. Most prime time and major network shows are carried on these channels. All of the major TV shows you see we receive also, including the Discovery channel on weekends. The UFC pay-per-view fights we receive at no charge. We watched the Olympic Games from Beijing. We spend a lot of time in the gym. Most of the men in my platoon are in the gym almost every night. We also have a Morale/Welfare/Recreation Center with pool and ping pong tables, darts, and board games. The MWR has a computer lab with internet access and a phone room. Several rooms in the living quarters have internet access. We're hoping to expand this system to every room so that we can have direct access to our homes.

USO performers occasionally entertain us. Puddle of Mudd was here. A Toby Keith concert was cancelled due to a sand storm. I missed Dane Clark when I was out on a mission. When we were in Kuwait at the start of our tour we saw Operation MySpace, an internet broadcast concert featuring Carlos Mencia, Jessica Simpson, The Pussy Cat Dolls, and Disturbed.

We've received many care packages. We're fortunate to have such a good support system. Food in the chow hall is exceptionally good. Snacks are in great abundance when we're preparing for a mission. My parents and my fiancé have kept a steady flow of packages heading my way. I received eight large care packages from my coworkers at American Structurepoint, Inc. I can't thank them enough. I think we're pretty well set for the rest of the year.

I have not mastered the Iraqi language. We actually don't have a great need to know it fluently since most of the contractors speak English and our direct contact with the Iraqi people is limited. The U.S. Army provided us with Iraqi language courses prior to deployment. As a result we're familiar with the basics of the language. The courses were self-paced computer programs. Since foreign languages are not my strong suit I did not actively pursue the course as others did.

...continued Page 25

SPOUSE/GUEST PROGRAM

Welcome to the 57th ISPLS Convention. For your convenience we have arranged to have the Hospitality Room for your enjoyment. Here you will find coffee and assorted soft drinks and a place to catch up with old friends, and make new ones.

The hospitality room at the Marriott Hotel will be available both Thursday from 7:00 a.m. to 5:00 p.m. and Friday from 7:00 a.m. to 3:00 p.m. You will meet in the Indianapolis Ballroom E on Thursday morning. On Friday morning you meet in the hospitality room prior to your departure from the hotel. A continental breakfast will be available in the hospitality room on Friday morning.

An itinerary of fun, interesting and educational activities is planned for this year's ISPLS Spouse/Guest program.

The formal program will start on Thursday morning at the hotel at 8:45 a.m. and on Friday at 8:30 a.m.. The itinerary for your group follows:

Thursday January 15, 2009

8:30 a.m. Meet in Indianapolis Ballroom E
8:45 a.m. Brunch presentation by the Tea Cottage of history and purposes of teas, includes scones, pastries, coffee and tea sampling.
11:45 a.m. Board bus and depart for lunch
12:00 p.m. Lunch at Milano Inn and Murder Mystery Show.
3:00 p.m. Board bus and return to Marriott East Hotel

Friday January 16, 2009

8:00 a.m. Meet in ISPLS Hospitality Suite
8:30 a.m. Board bus and depart for Indiana State Museum
9:00 a.m. Arrive at the Indiana State Museum
9:30 a.m. One Hour Docent guided tour on "New Lands, New Homes".
11:30 a.m. Lunch at LS Ayres Tea Room in Museum
1:00 p.m. Explore Museum and Gift Shop
2:30p.m. Board bus and return to Marriott East Hotel

Seiler has your solution... Survey – Scanning – RTK/GPS – Software



Seiler provides all the tools you need for any type of project with any type of budget. Our integrated solutions allow you to operate efficiently, accurately and safely.



www.seilerinst.com
SEILER

INDIANAPOLIS
5454 Harrison Park Lane
Indianapolis, IN 46216
(800) 533-2280
(317) 545-7090
E-mail: solutions@seilerinst.com



Providing Integrated Solutions since 1945
Sales • Service • Consulting • Training • Rentals • Financing



Seiler Instrument Midwest RTK Network.

MWRK.net area of coverage in Missouri, Illinois, Nebraska and Indiana is the largest VRS Network System in the Midwest!

Operational 24/7 365 days
100% Cable Free Operation
Eliminates the requirement to own and operate a base station receiver
Designed for use by Surveyors, Engineers, Contractors, and Mappers.

MWRK is an affordable and effective solution that can be budgeted in a daily, monthly, quarterly or annual rate. The MWRK Network dramatically improves cost efficiencies when compared to total station surveys and increases GPS field production.

Give us a call today or for more information on Seiler Instrument Company's Virtual Reference System check out our website at: www.mwrk.net.



Providing Integrated Solutions since 1945
Sales • Service • Consulting • Training • Rentals • Financing

www.seilerinst.com
SEILER

INDIANAPOLIS
5454 Harrison Park Lane
Indianapolis, IN 46216
(800) 533-2280
(317) 545-7090
E-mail: solutions@seilerinst.com

2008-09 Vincennes University Surveying Scholarship Awardees

\$5000 George Ridgway Scholarship Co-winners



Left in Photo: Wesley Miller, Heilman, IN

Dear Mr. Ridgway,

I would like to thank you for selecting me as the recipient of your scholarship. The money is being put towards my education in the Vincennes University Surveying Program. I hope to excel in and represent the surveying community well with my education.

Sincerely,
Wesley Miller

Right in Photo: Ben Carmack, Jeffersonville, IN

Dear Members of the George Ridgway Scholarship Committee:

Thank you for stepping up to support the next generation of land surveyors in Indiana. Your generous gift helped me start strong for my second year at Vincennes University. I am certain it will continue to help me far into my future. By taking a sincere interest in furthering the careers of new surveyors, you have set an example for me. I intend to do my part to pass on land surveying when my time arrives. I hope to meet some or perhaps all of you again at the ISPLS convention in January.

Many thanks and best wishes,
Ben Carmack

\$3000 Peggy Archer Scholarship Winner



Dear ISPLS,

Thank you for the award of the Peggy Archer Memorial Scholarship. I truly appreciate your decision and I am proud to be the recipient of such a noted award. This scholarship will hopefully allow me to reach my full potential, further pursue my education as a surveying student, and to one day become a Professional Land Surveyor.

Thank you again,
Skyler Potts, Vincennes, IN

\$2000 Central Indiana Chapter of ISPLS Winner



Dear Members of the Central Chapter of ISPLS,

I would like to thank the Members of the Central Indiana Chapter of ISPLS for selecting me as a recipient for the scholarship. I will try my best to excel in surveying and stand as a good representative for the Surveying Technology Program at Vincennes University.

Sincerely,
Justin A. Dickson, Winslow, IN



EXPLORE NEW BOUNDARIES!

Monuments, Caps and Accessories

800-445-5320 • surv-kap.com



2008-09 Vincennes University Surveying Scholarship Awardees

\$1000 Southwest Chapter of ISPLS Winners



Left in Photo: Chase Goldbach, Princeton, IN
Dear Members of Southwest Chapter of ISPLS,

I would like to take this opportunity to thank you for selecting me as the recipient of your scholarship. This scholarship will help me in pursuing my education in order to reach my goal of becoming a Licensed Surveyor. It is an honor to receive this scholarship.

Sincerely,
Chase Goldbach

Right in Photo: Corey Bettag, Mariah Hill, IN
Dear Members of Southwest Chapter of ISPLS,

I would like to thank you for your contributions. This scholarship was greatly appreciated and put towards my education at Vincennes University. I will continue to do my best at Vincennes University. Thank you again for your generosity and consideration.

Thank you,
Corey Bettag

\$500 Initial Point Chapter of ISPLS Winner



Dear Initial Point Chapter Members,

I would like to thank the Members of the Initial Point Chapter for considering me for this scholarship. The money that I received has greatly helped with my college expenses. With the current worry of the US economy and the rising prices of everyday life, the money comes as a relief. Before, I thought I was barely going to get by paying for my apartment, food, rent, and schooling, but my worries were taken away with receipt of this scholarship. This money is going to help in every aspect of my schooling. The scholarship went to someone who needed it and the money is being put to good use. Thank you.

Sincerely,
Jeremy Hobbs, Ellettsville, IN

\$500 Patrick "Pete" Nunn Winner



Dear Mr. Nunn,

I would like to take the time to thank you for selecting me as the first recipient of the Patrick "Pete" Nunn Scholarship. The scholarship money was put towards the cost of my surveying education at Vincennes University. I am truly grateful for your consideration and generosity.

Sincerely,
Mark Shea, Flat Rock, IL

COMPLETED CAREERS

Life Member ISPLS

John G. McEntyre, Laguna Woods, CA (88)

Born 11/3/20 in Topeka, Kansas and died 7/23/08 in Mission Viejo, California. He was the son of Winifred Dwyer and Guy McEntyre of Topeka, Kansas.

Dr. McEntyre was Professor Emeritus of Land Surveying at Purdue University for 18 years where he and Professor Kenneth Curtis founded a 4-year land-surveying program. He also taught Civil Engineering at Kansas State University 1947-63 and for 4 years acted in capacity as a consultant to Kabul University and the Cadastral Survey Project in Kandahar, Afghanistan 1963-1967. He was past president of BSPS, ISPLS, Kansas section ASCE. He was active in NSPS, ASEE, ISPLS, ISPLS professional societies.

Dr. McEntyre wrote many articles and papers and was a contributing author of several land-surveying works. He also wrote the landmark books, *Land Survey Systems* as well as *Workbook For Land Survey Systems, Containing Problems, Questions, Answers*. Dr. McEntyre was appointed an Honorary Deputy U.S. Surveyor by the Bureau of Land Management, U.S. Dept. of the Interior, May 1986. He was cited by the Board of Registration for Professional Engineers and Land Surveyors, State of Indiana, "For his imaginative leadership, wise counsel, and warm friendship during his years of service to the State of Indiana", May, 1986. He was given many awards including NSPS President Emeritus Award "in recognition of outstanding contributions made to the NSPS organization and the surveying profession," an ideal also recognized in the Surveying and Mapping Award of 1997 given by the Surveying and Mapping Division of ASCE of 1997. The Earl Fennel Award from the ACSM and the Indiana Distinguished Service Award acknowledged his contributions in education as did the 1990 Year of Service Award given to him by ISPLS "in recognition of dedication and service...and education of a generation of today's surveyors." The 1983 Bridge Award given by ACLS for "distinguished and benevolent service in bridging the decade for the betterment of society, the land surveying profession, and the future of mankind". The Purdue University Civil Engineering Staff Award of 1986 acknowledged him as a "vigorous champion of ethical standards and professional education for surveyors...an expert on boundary law whose contributions will leave a lasting impact on the land surveying profession." The Governor of Indiana awarded him the Sagamore of the Wabash Award in 1980, stating, in part, "for endearing himself to the citizens of Indiana as distinguished by his humanity in living, loyalty in friendship, and inspiration in leadership."

Dr. McEntyre joined the Army Reserve in 1940, serving active duty 1942-46. He served 2 years in the Coast Artillery Corps in the Alaska/Aleutian Campaign. He earned the Pacific Asia Service Ribbon with Campaign Star, the American Theatre Ribbon, and the WWII Victory Medal. He was a reservist until 1980 and retired as Lt. Col.

Professor McEntyre graduated Hayden High School, Topeka, Kansas 1938, Kansas State University with B.S. in Engineering in 1942. He obtained a M.S. in 1948 and a Ph.D. from Cornell University in New York in 1955. He graduated with honors. His school honoraries included Phi Kappa Phi (top 10% graduates), Chi Epsilon (Civil Engineering), Lambda Sigma (Land Surveying), Phi Delta Kappa (Education), Sigma Xi Assoc Member (Research), TauBeta Pi (Engineering).

A TRIBUTE TO JOHN McENTYRE

by Ken Curtis

This past summer, I lost several friends (which seems to be happening all too often lately) but after all I'm about to turn 83 this October. One of my best friends and teaching colleagues was John McEntyre. Early on, I knew John as he was a civil engineering teacher of surveying at Kansas State University at Manhattan, KS. Our paths would cross at several national surveying society meetings (notably A.C.S.M.), as I held the same position, except at Purdue University.

One of my first recollections of Virginia, John and family was when we both attended a National Surveying Teachers Conference sponsored by Georgia Tech but held on the North Georgia College at Dahlona, GA. The week-long meeting of August 19-25, 1962 brought together surveying teachers and their families from all across the country. These conferences are still continuing every two or three years to this day. John took leave from Kansas State to pursue graduate study and a PhD (in 1955) from Cornell University (New York) under our mutual friend, Prof. Arthur McNair. It is my belief that his was probably the first PhD dissertation in "land surveying" in the United States. His topic was "*Land Surveying and Land Registration*".

How did he get to Purdue? John took leave from K.S.U. for two years (1963-65) to work as a U.S. A.I.D. cadastral consultant to the Afghanistan government. After that assignment, he was invited to be a consultant for another two years (1966-67) to Kabul University in Afghanistan. Purdue University was a member of a consortium giving aid to Kabul University and Purdue's Dean of Technology, George McNelly, brought him onto the Purdue staff to handle this assignment. On completion of this assignment, he began teaching on the Purdue campus.

About this time, after several unsuccessful attempts to inaugurate a land surveying curriculum under civil engineering at Purdue, the I.S.P.L.S. was successful in convincing the administration that such a program was needed. John was transferred over to civil engineering to help in teaching the necessary 10 plus courses in surveying and mapping and we commenced to offer the B.S.L.S. in 1970 with the first graduates in 1972. The success of the program speaks for itself!

John's four courses were at the core of the curriculum. These were; Land Survey Systems, Property Surveys and Descriptions, Legal Aspects of Surveying, and Subdivision Design. He wrote a textbook, *Land Survey Systems (1978)*, that is widely used across the country.

He retired in 1986 and eventually moved to California where his wife, Virginia, had had a stroke and they lived with daughter, Mary, until her death in 2005. Since then my communication with him has diminished.

I have reminisced a lot lately about our associations with my dear friend, John McEntyre. Although John spent about 20 plus years living in West Lafayette, he was nevertheless more a native Kansan than a Hoosier often referring to West Lafayette as "Manhattan". I would have to correct him! Also I recall: the state and national meetings we attended together; the summer surveying field project courses taught on campus, or Forestry Camp in Perry County, or FFA Camp near Camp Atterbury in Johnson County; our "traveling workshops" held around Indiana during several summers; our lunch and discussions, usually at the Cary Hall grill; our associations with I.S.P.L.S. (he served as president in 1974), L.S. Registration Board, and land surveyors across the state and nation.

John McEntyre devoted his professional career to the land surveying profession which he loved and we salute him for his outstanding contributions. He will be missed!

COMPLETED CAREERS

ISPLS Member

David M. Pruett, Indianapolis, IN (53)

David M. Pruett age 53, of Indianapolis, Indiana, formerly of West Baden, Indiana, passed away on September 6, 2008 at a family residence in West Baden, Indiana.

He was the technical supervisor for the Office of the Marion County Surveyor.

Dave was a member of ISPLS and a member of the Central Indiana Chapter of ISPLS. He had been spending most of his weekends in West Baden taking care of his dad.

Dave was a 1984 graduate of the Vincennes University Surveying Program. David maintained close ties with his Alma Mater. An annual donation from Dave to the program would help pay for the students to attend the ISPLS Convention. He was instrumental in the hiring of V.U. Surveying grads to work in the Marion County Surveyors office.

He was an avid ginseng hunter, Dave's quiet nature and sly sense of humor will be missed. May you rest in peace our friend.

ISPLS Member

William S. Tanke, Valparaiso, IN (82)

William S. Tanke, "Bill", age 82 of Valparaiso passed away Tuesday, August 5, 2008. Bill thoroughly enjoyed every stage of his life. As a boy and young adult, he enjoyed exploring the Wisconsin River and the Wisconsin Dells with his friends. Bill served in the Air Force toward the end of WWII, he graduated from Valparaiso University with a degree in Civil Engineering. It was in Valparaiso that he met Barbara. Bill served as Porter County Surveyor for over 20 years and was readily recognized by the sound of his whistling echoing through the Courthouse walls. Bill was a life member of the Indiana Society of Professional Land Surveyors and served as president in 1975. Bill and Barb made their home on a small family farm west of Valparaiso. He loved the woods, creeks, fields and ponds and spent many of his free moments there. He served on several public bodies including the Porter County Plan Commission, and the Little Calumet River Basin Development Commission. Most of Bill's hobbies and interests involved the outdoors. He loved snowmobiling in the winter, fishing in the summer and "puttering" around the farm any time of the year. His smile, wit and generosity will be missed by his family and many friends. Entombment will be at Maplewood Cemetery.

Your deadlines are our deadlines



Custom orders your way ... when you need them.

When your name is on it, our name is behind it.

Berntsen delivers.

The professional's choice in survey products • www.berntsen.com • 877.686.8561



ALLEN PRECISION EQUIPMENT



NEW



Affordable ProMark™ 500

The new Magellan® ProMark 500 offers GPS+ GLONASS +20 years of field-proven technologies for surveying and geodesy. Magellan's latest RTK survey solution delivers state-of-the art GNSS in a smart, compact, light and cable-free design that gives you maximum mobility and flexibility in the field.

FEATURES:

- Wide range of communications
- Cable-free, lightweight design
- Rugged base and rover solution
- Multi-application field terminal

STARTING AS LOW AS

\$499/per mo.



UPGRADE
YOUR EXISTING ASHTECH RECEIVERS
(Z-EXTREMES, Z-SURVEYOR, Z-12)

ProMark™ 3 RTK High Precision without the High Cost

PROPRIETARY MAGELLAN RTK TECHNOLOGY

- ProMark3 RTK offers complete real-time GNSS surveying and mobile mapping capabilities on an innovative platform ProMark3 RTK features the flexibility of two real-time survey modes:
- Base + rover system using a "plug and play" radio modem, powered and configured via the receiver
- Rover only with network connectivity, via NTRIP or Direct IP
- Affordability
- Professional solution
- Multi-Application
- Easy to use



INCREDIBLE

STARTING AS LOW AS

\$269/per mo.



800-241-6223 • www.allenprecision.com



Do you have....

PROFESSIONAL LIABILITY

Insurance Coverage?

Or

Are you paying too much for your current Error's and Omission Coverage?

THE GROUP PURCHASING POWER OF THE ISPLS CAN HELP SATISFY YOUR INSURANCE NEEDS

Professional Liability

Homeowners and Automobile

Group Health Insurance

Business Owners Policy

Individual/Family Health Insurance

Worker's Compensation

Health Savings Account (HSA)

Long Term-Care

Life Insurance

Disability Insurance

Please check the plan or plans you are interested in and complete the information below. You may fax (317) 471-1700 or mail this page to:

Tod Wallgren

Agency Associates, Inc.

4545 Northwestern Drive

Zionsville, IN 46077

Email: twallgren@agencyassoc.com

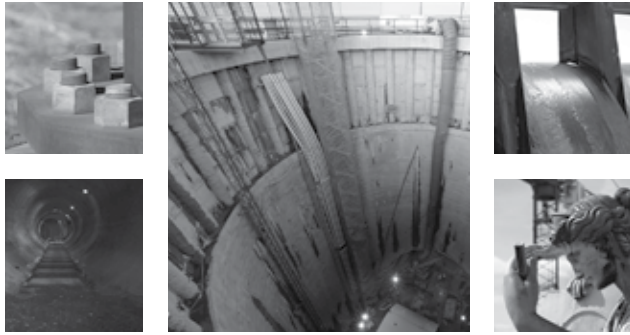
Ph: 317-228-3777 or 877-647-2242

Contact Name: _____

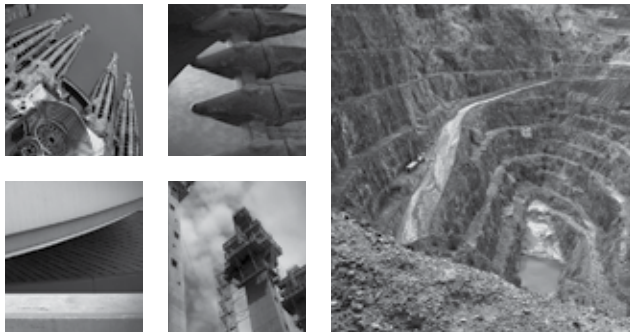
Firm Name: _____

Address: _____

Phone: _____ Ext: _____ Fax: _____



How much work did you
pass up this morning?



© 2008, Trimble Navigation Limited. All rights reserved. Trimble and the Globe & Triangle logo are trademarks of Trimble Navigation Limited, registered in the United States and in other countries. Trimble S8 & Trimble 4D Control software are trademarks of Trimble Navigation Limited. All other trademarks are the property of their respective owners. SUR-173

**MONITORING PROJECTS
ARE EVERYWHERE**

The new Trimble Engineering and Monitoring Solution expands the role of your survey teams. Detect, monitor and report motion anywhere, in real-time. You'll have new opportunities to handle a broader scope of jobs than ever before, in places you've never considered. The world is in constant motion. See how surveyors around the world are advancing business with Trimble Engineering and Monitoring Solutions.

Discover how much new work is waiting for you, visit www.trimble.com/monitor

Trimble 2009
DIMENSIONS
February 23 – 25, 2009



**FOR MORE
INFORMATION CALL
YOUR TRIMBLE DEALER**

Seiler Instruments
Indianapolis, IN
317-849-7090

MEET A MEMBER:

Donna Smithers, PLS: Northpointe Surveying's Sole Proprietor

As told to David B. H. Best, PLS, Indianapolis

Ed. Note: In our visit with Donna Smithers, P.L.S., in her Greenwood, Indiana office we found an energetic, confident businesswoman excited about her roles as land surveyor and owner of Northpointe Surveying, Inc. She emphasized the need to surround herself with the best people she could find. She said that as a team they mesh well together. When asked what she considered the key to running a successful business she said, "We must treat people as good as gold!" The following responses provide a profile of a goal-oriented person.

Q: What sparked your interest in land surveying and of owning your own firm?

A: I attended Center Grove High School and Central Nine Vocational School concurrently, the former in the morning, the latter in the afternoon. At Central Nine I studied drafting. In 1986, my senior year, Central Nine provided an out-of-school opportunity to work for Site Line Surveying drawing survey location reports by hand. Thanks to John Silnes of Site Line who introduced me to the fundamentals of land surveying I knew I'd found my life's work. After working with several other surveying and engineering companies in 1997 I hired on with Maurer and Associates, now Maurer Surveying. Subsequently I became a partner with Paul Maurer under Maurer & Smithers, Inc. From there I started Northpointe Surveying, Inc. in August, 2005.

Q: What is your educational background?

A: I attended IUPUI part time while working full time. With the required years of experience under the supervision of a registered land surveyor and meeting the educational requirement of the Indiana law I successfully passed the state examination.

Q: Tell about your company, its employees, and the focus of its surveying projects.

A: We are located in Greenwood, Indiana on State Road 135. I am the sole owner. The people who work for me are associates, not employees. We're a hardworking team. We love what we do. This is why we are strong and successful. The team consists of myself, Venus Thorne, Dane Waltman, John Wilson, and Mae Harmeyer. Venus is my sister. She has an engineering degree from Cleveland State University. She will be taking the Indiana P.E. examination next spring. When she receives her P.E. license the firm name will change to Northpointe Engineering and Surveying, Inc. Venus is project manager for site design and layout. She also manages our City of Indianapolis Clean Stream Team projects with DLZ of Indiana. I have worked with Dane since 1997. He is also project manager for site design and layout. He schedules our field work and manages our INDOT projects. I am very proud of John. He recently became a P.L.S. He has complete charge of our field surveying and staking by means of our robotic equipment. Mae is my mother. She works part time. She assists with administrative duties and conducts all research for our surveying projects. Our services run the gamut of land surveying, land development, and builder needs. We are certified as a Women's

Business Enterprise and a Disadvantaged Business Enterprise with the City of Indianapolis and the State of Indiana. We are pre-qualified with the Indiana Department of Transportation.

Q: What is your business philosophy?

A: Our goal is to keep our clients happy and satisfied. At times it's a challenge. Repeat clients and referrals keep us on track. We work as a team. We do have our ups and downs, but we are always there for each other.

Q: What can ISPLS do to interest young people in choosing land surveying as a career?

A: We need to become more visible in the community and in the high schools. We must better inform young people about the challenge and advantage land surveying offers as a career.

Q: What is life like for you beyond the office?

A: To be honest I'm a workaholic. I truly love what I do. When you own a business it's hard to get away from it. Occasionally I play golf with my husband. I play the guitar with my dad, uncle and brother-in-law.

Q: What final words do you have?

A: I'm a Hoosier born and bred. My parents Larry and Mae Harmeyer taught me the great values that I take with me everyday. I am the oldest of three children with brother Larry and sister Venus. A book I am currently reading is Mitch Albom's For One More Day. I'm excited about the future of land surveying with the continuing technological changes. To me it's just fun!

Iraq

...continued from Page 15

Since I'm pursuing a degree in land surveying I have more than a casual interest in the ongoing surveying work at my base. I plan to have conversations with the surveyors on our base. I've seen Trimble Base Units set up on monuments around the base. I assume the monuments were set via GPS when the base was established. The military's mindset always is to improve their areas. During basic training we were taught "constant improvement of your foxhole." Our base is evolving on a daily basis. New buildings are going up with full living areas from shipping container housing units. New roads are under construction with existing roads and buildings undergoing reconstruction. I hope to find a free day soon to talk with members of a survey crew.

As I sign off for now I wish to express my thanks and appreciation for the support from ISPLS and for the care packages I've received. Just the offer of support is something a soldier loves to hear when he is over here. Thank you.
Ryan Selby

CALENDAR

November 9, 2008

Indiana Land Surveyors State Board of Registration meeting, Room W064, Indiana Government Center South, Indianapolis

November 15, 2008

ISPLS BOD meeting, 9:00 a.m., Headquarters, Indianapolis

December 6, 2008

ISPLS BOD meeting, 9:00 a.m., Headquarters, Indianapolis

January 9, 2009

Indiana Land Surveyors State Board of Registration meeting, Room W072

January 14, 2009

ISPLS BOD meeting, 9:00 a.m., Marriott East Indianapolis

January 14-16, 2009

ISPLS 57th Annual Convention, Marriott East Indianapolis

April 17, 2009

Indiana Land Surveyors State Board of Registration meeting, Room W064

WELCOME NEW ISPLS MEMBERS

Paul Aikins - Professional to Affiliate

Kenneth Anderson - Life

Thad Berkes - Student

Christopher Bledsoe - Associate

Matthew Brendel - Affiliate

John Herron - Professional

David Pilz - Life

William Schmidt -Professional

John O. Stephens - Associate

Lee Utt - Life

William Schmidt - Professional

Todd Wallgren - Affiliate

2009 Indianapolis Mini-Marathon

Time is running out for registering for the 2009 Indianapolis Mini-Marathon. The Mini has sold-out for the past six years, with 35,000 registrants in 2008, and an additional 4,000 participants in the Finish Line 500 Festival 5K. The Mini-Marathon is the largest half-marathon in the U.S., and overall, the fifth largest running event in America. The 2008 event sold out on November 30, 2007. The 33rd Running of the OneAmerica 500 Festival Mini-Marathon takes place on Saturday, May 2, 2009. You must act fast if you wish to participate as part of Team ISPLS in the marathon. You can go to the Mini Marathon website at: <http://www.500festival.com/marathon/> or Team Challenge information at: <http://www.500festival.com/marathon/TeamChallenge.asp>

SUSTAINING MEMBERS

ADVANCED SURVEY SOLUTIONS

2220 N. Franklin Road
Indianapolis, IN 46219
(317) 356-9800

AVATECH SOLUTIONS, INC. Indiana, LLC

9465 Counselors Row, Suite 100
The Precedent Office Park
Indianapolis, IN 46240
(317) 846-2900

“an Avatech Solutions Company”

ALLEN PRECISION EQUIPMENT

1550 Boogs Road
Duluth, Georgia 30096
(770) 279-7171

BERNTSEN INTERNATIONAL, INC.

P.O. Box 8670
Madison, WI 53708
(800) 356-7388

HARRISON MARKER AND INSTRUMENT COMPANY

P.O. Box 66
Anoka, Minnesota 55303
(763) 421-1445

HAYES INSTRUMENT CO.

502 S. Cannon Blvd.
Shelbyville, Tennessee 37160
(800) 251-1280

LEICA GEOSYSTEMS, INC.

4855 Peachtree Industrial Blvd, Ste 235
Norcross, GA 03392
(800) 367-9453

POSITIONING SOLUTIONS CO.

7522 E. 39th Street
Indianapolis, Indiana 46226
(317) 542-7673

SEILER INSTRUMENT & MANUFACTURING COMPANY

9454 Harrison Park Lane
Indianapolis, Indiana 46216
(317) 545-7090

SURV-KAP

PO Box 27367
Tucson, AZ 85726
(800) 445-5320

TRIMBLE NAVIGATION LTD-SURVEY DIV

10355 Westmoor Drive, Suite 100
Westminster, CO 80021
(720) 887-6100

FIRM MEMBERS



Bryan J. Moll, LS
Department Manager

AMERICAN
STRUCTUREPOINT
INC.

TEL 317.547.5580 7260 Shadeland Station
FAX 317.543.0270 Indianapolis, IN 46256-3957
CELL 317.408.2215 www.structurepoint.com
HOME 317.826.1384 bmoll@structurepoint.com

TELEPHONE 317/482-5141 : 317/873-2515 FAX 317/483-0559

ANDERSON & ASSOCIATES

117 WEST MAIN STREET
P.O. BOX 508
LEBANON, IN 46052

- BOUNDARY SURVEYS
- MORTGAGE SURVEYS
- TOPOGRAPHY MAPS
- DRAINAGE PLANS
- SUBDIVISION DESIGN
- CONSTRUCTION STAKING

ASA Land Surveying

7 South Spring Street Ph. 765-653-2714
Greencastle, IN 46135 Fax 765-653-1227
e-mail: asa@broadreach.net

Rob Costin Greg Williams, P.L.S.

Hubert L. Longest, Jr., P.E.
President



Beam, Longest and Neff, Inc.
CONSULTING ENGINEERS

8126 Castleton Rd. 1-317-849-5832
Indianapolis, IN 46250 FAX 1-317-841-4280



MATTHEW E. WANNEMUEHLER, L.S.
ADMINISTRATOR OF ENGINEERING AND SURVEYING

EVANSVILLE INDIANAPOLIS WEST LAFAYETTE
800.423.7411 888.830.6977 800.790.0286

BERNARDIN • LOCHMUELLER & ASSOCIATES, INC.

6200 Vogel Road • Evansville, Indiana 47715-4006 • www.blainc.com
ENGINEERING • SURVEYING • PLANNING • ENVIRONMENTAL SERVICES



Bonar Group
Engineers
Surveyors
Planners

Rich Hudson, L.S.
219.462.1158
Valparaiso, IN
rhudson@bonargroup.com

Charlie Bevington, L.S.
260.969.8845
Fort Wayne, IN
cbevington@bonargroup.com

Defiance Fort Wayne Indianapolis Plymouth Scottsburg Valparaiso



Civil Designs

Bradley P. Ott, PLS, PE
Surveying Manager

p 317-244-1968
f 317-244-1969

2415 Directors Row, Ste. E
Indianapolis, IN 46241
bott@civil-designs.com
www.civil-designs.com

Civil Engineering Site Design Land Planning Surveying



Architects - Engineers

Eric C. White, RLS
Survey Project Manager
ewhite@cripe.biz

7172 Graham Road Indianapolis, Indiana 46250
Telephone + Facsimile 317 845 7033
www.cripe.biz

DeBoy

Land Development Services, Inc.

Michael L. DeBoy, LS

(317) 770-1801 Ext. 100
(317) 770-1821 Fax

(317) 379-3641 cell
miked@deboyland.com

501 South 9th Street, Suite 100, Noblesville, Indiana 46060



There is no boundary to the quality of our service!

Professional Engineer/Professional Land Surveyor

Toll-Free: 800-439-4356
Local: 765-361-1510
deckard@deckardsurveying.com

1517 S. Grant Street
Crawfordsville, IN 47933

Surveying • Mapping & GPS Services • Underground Locating • Engineering & Design



Robert P. Kirkley, P.E., L.S.
Senior Vice President

2211 East Jefferson Blvd. • South Bend, Indiana 46615
Telephone (574) 236-4400 • FAX (574) 236-4471
Mobile (574) 514-8169
E-mail: bkirkley@dlz.com

FIRM MEMBERS



DONOVAN ENGINEERING
2020 INWOOD DRIVE
EXECUTIVE PARK
FORT WAYNE, IN 46815

GREG ROBERTS P.L.S. OFFICE 424-7418
JOHN R. DONOVAN P.E. & P.L.S.
FRANCIS X. MUELLER P.L.S.



Mike Falk, PE, LS
President

5979 McCasland Ave. • Portage, Indiana 46368
Phone: 219-762-7024 • Toll Free: 888-965-1143
Fax: 219-764-4261
Net: www.falk-pli.com



Ross Holloway, PE, PLS
President

phone: 317.831.7918
800.831.7918
fax: 317.831.8255

P.O. Box 234 Mooresville, IN 46158 Web: hollowayengineering.com



Mark R. Isaacs, PLS

Land Surveying
Civil Engineering
GPS Surveying
Construction Engineering

820 Sweet St., Brownstown, IN 47220
812-358-2882 Fax 812-358-2605
622 West 2nd St., Seymour, IN 47274
812-522-3821 Fax 812-524-0007

Mobile 812-521-2457
E-mail: misaacs@ilsurveying.com

Marbach, Brady & Weaver, Inc.

3220 Southview Dr.

Elkhart, IN 46514

574.286.1010

Fax 574.282.3040

chris@marbachpls.com



Christian F. Marbach, PLS.

Engineering & Surveying Since 1918



Consulting Engineers
Land Surveyors
Architects
Construction Managers

Danny K. Leek, P.L.S.

4800 Rosebud Lane
Newburgh, Indiana 47630

Off: 812-464-9585
Fax 812-464-2514

<http://www.morleyandassociates.com>



PAUL I. CRIFE, INC.

Alex D. Oak, PE, RLS
President

7172 Graham Road
Indianapolis, Indiana 46250

317-842-6777

FAX# 317-841-4798

Architects ▲ Engineers ▲ Landscape Architects
Land Planners ▲ Land Surveyors ▲ Environmental Consultants



Michael L. Plumb
Survey Technician

www.plumbtuckett.com

Phone (219) 736-0555 • Fax (219) 769-0178
64 West 67th Place • Merrillville, IN 46410
mplumb@plumbtuckett.com

**SURVEYORS
ENGINEERS
ARCHITECTS**
SINCE 1955

PROJECTS plus

2555 Fairview Place, Suite A
Greenwood, Indiana 46142

OFFICE (317) 882-5003
FAX (317) 882-1082

E-MAIL enr@projectsplus.org

LAND PLANNING • ENGINEERING • SURVEYING • PROJECT MANAGEMENT



Bradley A. Rayl, P.E., P.L.S.
president

1940 East 53rd Street
Anderson, IN 46013

Business: (765) 643-5614 • Fax: (765) 643-1874
Email: rse@netdirect.net



RICHARD T. O'CONNOR, PE
Vice President

RQAW Corporation
4755 Kingsway Drive, Suite 400
Indianapolis, IN 46205-1547
(317) 255-6060 Ext. 241

1-800-886-6062
FAX (317) 255-8354
Mobile: (317) 695-5639
roconnor@rqaw.com

THE HOOSIER SURVEYOR

Indiana Society of Professional Land Surveyors, Inc.
55 Monument Circle, Suite 719
Indianapolis, Indiana 46204

PRESORTED
STANDARD
U. S. Postage PAID
Indianapolis, IN
Permit No. 4056

HARRISONs

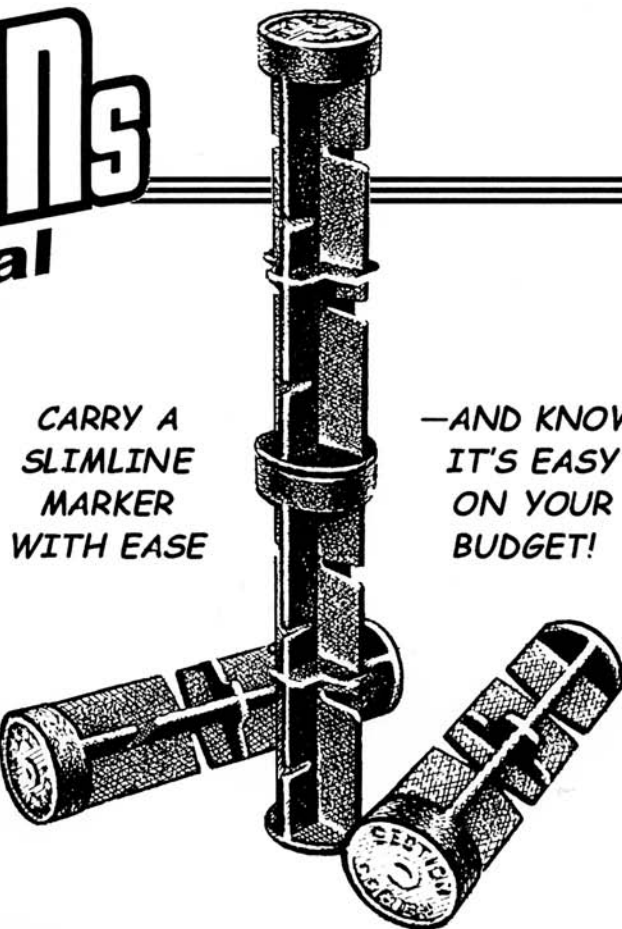
are economical

Cost-efficient surveyors use HARRISON Slimline markers for subdivision plottings and secondary witness corners.

The markers are lighter, yet share HARRISON's features for stability and permanence.

HARRISON
MARKER CO.

Box 66, Anoka, MN 55303
Telephone (763) 421-1445



*CARRY A
SLIMLINE
MARKER
WITH EASE*

*—AND KNOW
IT'S EASY
ON YOUR
BUDGET!*